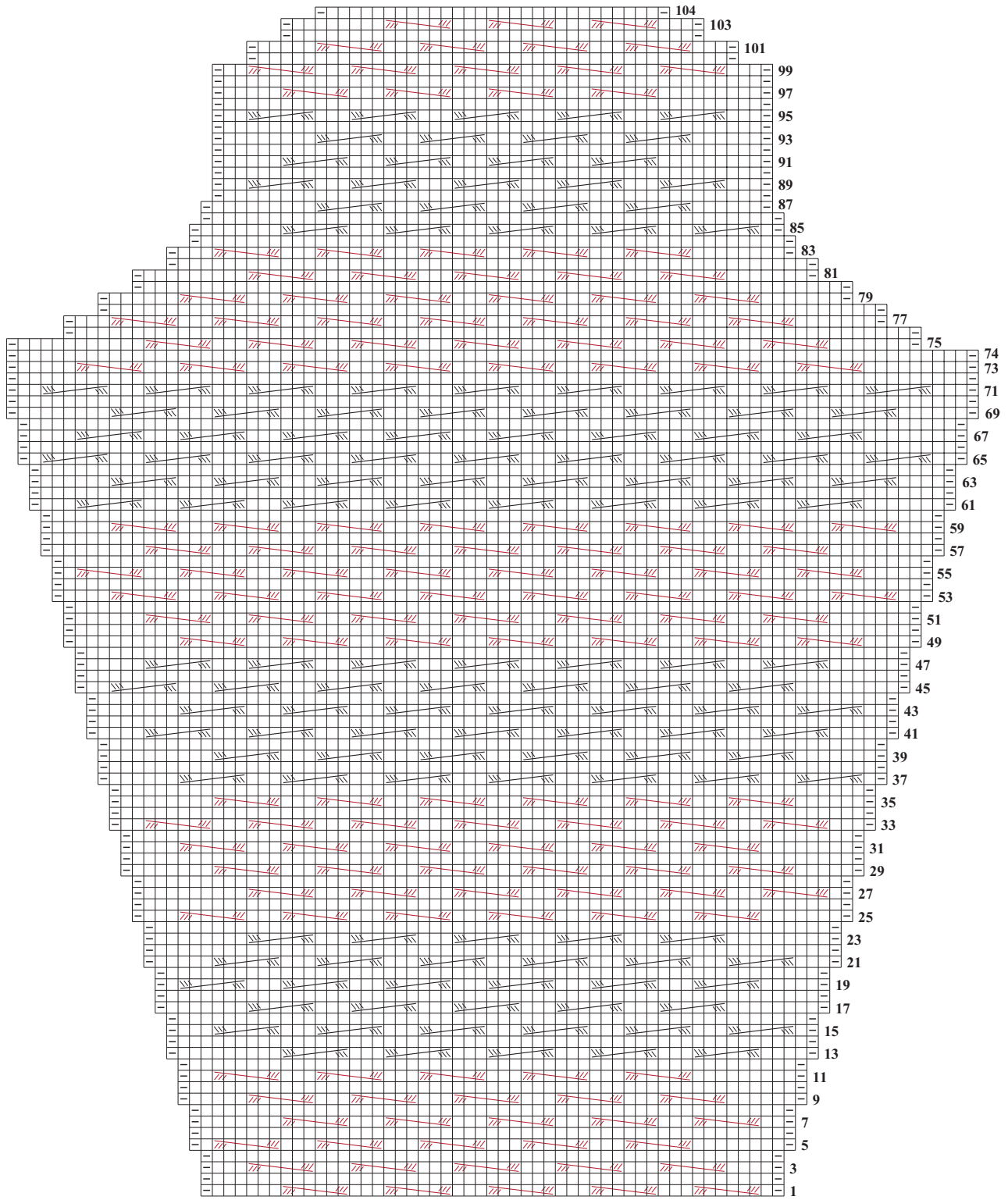




SLEEVE, SMALL/MEDIUM

31 sts



Stitch Key

- K on RS, p on WS
- P on RS, k on WS

-  6-st RC
-  6-st LC

Cabled sleeve instruction errata:

Photo on page 95, instructions begin on page 129.

The increases for the size large are incorrect, replace with the following:
 With 2 strands of yarn. . . .
 Work in Chart pat inc 1 st each side every 4th row 17 times,
 every other row 0(3) times—85(91) sts.