

VOGUEknitting

Debbie Bliss designed this close-fitting cable and seed-stitch jacket. Sized for Small (Medium, Large) and shown in size Small.



KNITTED MEASUREMENTS

- Bust (buttoned) 32 (36, 40)"/82 (92, 102)cm
- Length 20½ (20¾, 22)"/52 (53, 56)cm
- Upper arm 16 (16¼, 17½)"/40.5 (42.5, 44.5)cm

MATERIALS

- 14 (15, 17) 1¾oz/50g balls (each approx 100yd/90m) of Debbie Bliss/KFI *Cashmerino Aran* (merino wool/microfiber/cashmere) in #09 silver
- One size 8 (5mm) circular needle, 24"/60cm long OR SIZE TO OBTAIN GAUGE
- Cable needle (cn), two 1"/2.5cm buttons, stitch holders and markers

GAUGE

20 sts and 30 rows = 4"/10cm over seed st using size 8 (5mm) needles.

TAKE TIME TO CHECK GAUGE.

SEED STITCH

Row 1 (RS) *P1, k1; rep from * to end. **Row 2** K the purl sts and p the knit sts. Rep row 2 for seed st.

STITCH GLOSSARY

3-st LPC Sl 2 sts to cn and hold to *front*, p1, k2 from cn. **3-st RPC** Sl 1 st to cn and hold to *back*, k2, p1 from cn. **4-st RC** Sl 2 sts to cn and hold to *back*, k2, k2 from cn. **4-st LC** Sl 2 sts to cn and hold to *front*, k2, k2 from cn. **4-st LPC** Sl 2 sts to cn and hold to *front*, p2, k2 from cn. **4-st RPC** Sl 2 sts to cn and hold to *back*, k2, p2 from cn.

NOTE

Each sleeve and yoke section is worked in one piece from the wrist to the shoulder, and across one half of the front and back. The peplum section is worked in one piece from the lower edge, the center back panel and front bands are worked as extensions.

PEPLUM

Cast on 376 (428, 480) sts. **Row 1 (WS)** Work row 1 of panels as foll: A once, B once, [C and B] 13 (15, 17) times, D once. Work as established until piece measures 9¾ (11, 12¼)"/25 (28, 31)cm from beg, end with row 2 of panels A and D—238 (270, 302) sts. **Next row (WS)** Work 13 sts for left front buttonband, bind off next 100 (116, 132) sts working p2tog over center 2 sts of each cable, work until 12 sts from last bind-off for center back panel, bind off next 100 (116, 132) sts, work to end for right front buttonhole band. Leave sts for front bands and center back panel on holders. For placement of side seams, place 2

markers on bound-off edge, in the center of 4th (4th, 5th) panel B (C, B) from each end.

RIGHT SLEEVE AND YOKE

Cast on 62 (66, 70) sts. **Row 1 (WS)** K1, [p1, k1] 1 (2, 3) times for seed st, work row 1 of panels E, F and E, end [k1, p1] 1 (2, 3) times, k1 for seed st. Cont in pats as established and working inc's into seed st, inc 1 st each side every 8th row 14 times—90 (94, 98) sts. Work even until sleeve measures 17¼ (17¾, 18)"/44 (45, 45.5)cm from beg.

SHAPE YOKE

****Next row (RS)** Cast on 15 sts, k1, p1, k4, p1, [k1, p1] 4 times across these sts, work to end. **Next row** Cast on 15 sts, p1, k1, p4, k1, [k1, p1] 4 times across these sts, work to last 15 sts, work 8 sts seed st, k1, p4, k1, p1—120 (124, 128) sts. **Next row** K1, p1, 4-st RC, p1, work to last 15 sts, work 8 sts seed st, p1, 4-st RC, p1, k1. **Next row** P1, k1, p4,

k1, work to last 7 sts, k1, p4, k1, p1. The last 2 rows form the 4-st cable along the edge of both the back and front right yokes, working 4-st RC every 4th row. Work even until piece measures 4¾ (5¼, 6)"/12 (13.5, 15)cm from **.

Neck shaping

Next row (RS) Work 60 (62, 64) sts, turn and cont on these sts only for right front, leave rem sts on needle (or place on holder) for right back. **Next row (WS)** Bind off 15 sts, work to end. Cont to bind off 3 sts at beg of next 3 WS rows, 2 sts at beg of next 2 WS rows—32 (34, 36) sts. Work even until piece measures 7 (8, 9)"/18 (20.5, 23)cm from **. Bind off in pat. With RS facing, rejoin yarn to 60 (62, 64) sts on needle (or sl sts from holder to needle), bind off 4 sts, work to end for right back—56 (58, 60) sts. Work even until piece measures 7 (8, 9)"/18 (20.5, 23)cm from **. Bind off in pat.

LEFT SLEEVE AND YOKE

Work as for Right Sleeve and Yoke until piece



DEBBIE BLISS/KFI CASHMERINO ARAN
(merino wool/microfiber/cashmere) in #09 SILVER



measures 4¾ (5¼, 6)"/12 (13.5, 15)cm from **, ending with a RS row.

Neck shaping

Next row (WS) Work 60 (62, 64) sts, turn and cont on these sts only for left front, leave rem sts for back on needle (or sl to holder). Complete to correspond to Right Sleeve and Yoke, reversing shaping.

CENTER BACK PANEL

With RS facing, rejoin yarn to 12 sts on holder for center back panel. Work in cable pat as established until center back panel measures same length as bound-off edge of left (b) and right (c) yokes, ending with a cable row. Bind off, working p2tog over center 2 sts of both cables.

FINISHING

Sew bound-off edges of yokes to inner edges of button band and center back panel, foll schematic diagram and matching letters a, b, c and d. Sew sleeve and underarm seams. Center left underarm seam at left side seam marker, sew yoke edge to bound-off edge of peplum, leaving sts on front holders free. Repeat with right sleeve and yoke on other side.

BUTTONHOLE BAND

Begin with a RS row, join yarn and work 2 rows across 13 sts of right front holder. **Buttonhole row (RS)** Work 2 sts, k2tog, yo twice, k2tog, work to end. On next row, work 2 sts into double yo. Work until band fits along front edge of yoke, end with a WS row at ½"/1.5cm below neck edge. Rep buttonhole row. Work even until band measures same as front edge of yoke, end at neck edge with a WS row. Leave sts on a holder. Sew band in place.

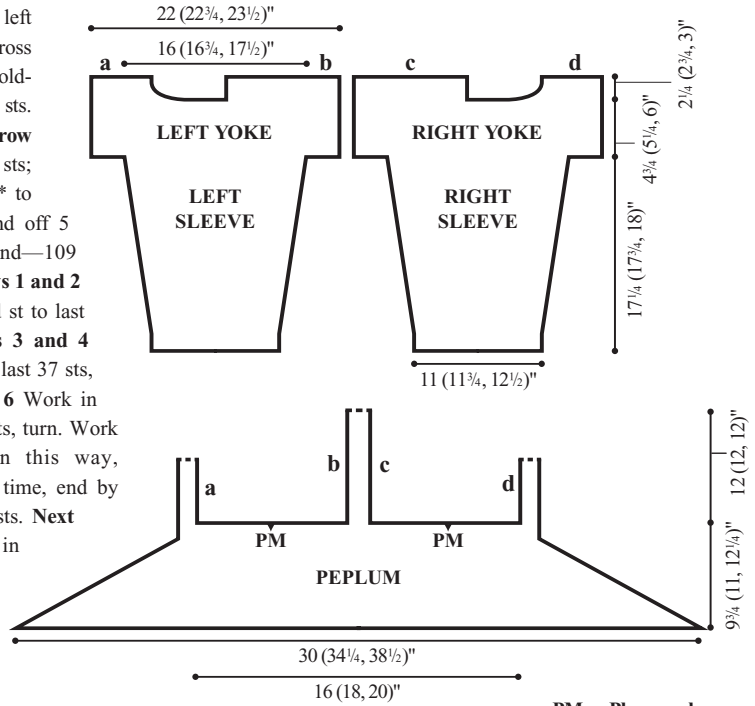
BUTTON BAND

Begin with a RS row, attach yarn and work even on 13 sts from left front holder until band measures the same length as front edge of yoke, ending at neck edge with a WS row. Leave sts on a holder for collar. Sew band in place. Sew buttons to button band opposite buttonholes.

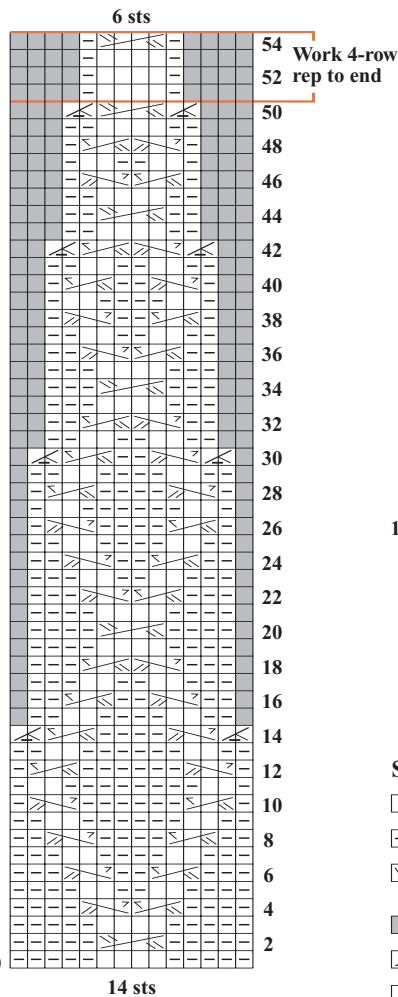
Collar

With RS facing, work across 13 sts on right front holder, pick up and k 28 (31, 34) sts up right front neck, 13 (16, 19) sts across right back neck, (k5, k2tog, k5) across 12 sts of center back panel, pick up and k 13 (16, 19) sts across left back neck and 28

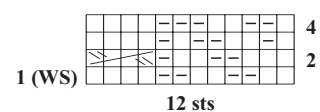
(31, 34) sts down left front neck, work across 13 sts on left front holder—119 (131, 143) sts. K 1 row. **Next row (RS)** Bind off 5 sts; *p1, k1; rep from * to end. **Next row** Bind off 5 sts, seed st to end—109 (121, 133) sts. **Rows 1 and 2 (RS)** Work in seed st to last 41 sts, turn. **Rows 3 and 4** Work in seed st to last 37 sts, turn. **Rows 5 and 6** Work in seed st to last 33 sts, turn. Work 12 more rows in this way, adding 4 sts each time, end by working to last 9 sts. **Next row (RS)** Work in seed st to end. Cont in seed st over all sts, until collar measures 2"/5cm from front bound-off edges. Bind off in seed st. ❖



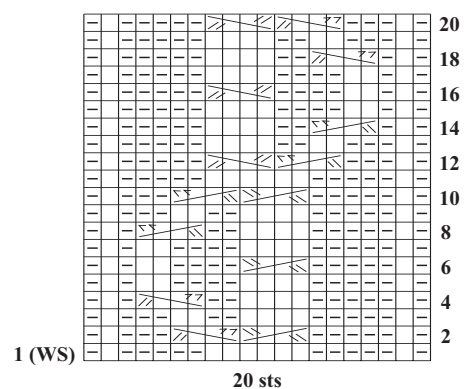
PANEL B



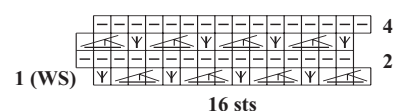
PANEL D



PANEL E

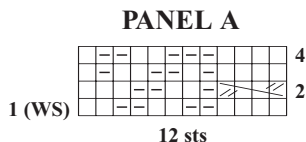


PANEL F



Stitch Key

- K on RS, p on WS
- P on RS, k on WS
- ▽ K1, p1, k1 into next st
- No stitch
- ▧ P2tog
- ▨ K3tog
- ▧ 3-st RPC
- ▧ 3-st LPC
- ▧ 4-st RC
- ▧ 4-st LC
- ▧ 4-st RPC
- ▧ 4-st LPC



PANEL C

