

VOGUEknitting

Mari Lynn Patrick's pullover features three quarter length sleeves, a deep V neck and a long tie that buttons at the neck. All are knit in the same scheme: stockinette sprinkled with single purl stitches.



TIE TOP

KNITTED MEASUREMENTS

- Sized for X-Small (Small, Medium, Large).
Shown in size Small.

MATERIALS

- 4 (4, 4, 5) 3½ oz/100g balls (each approx 207yd/188m) of Lion Brand Yarn *Cotton-Ease* (cotton/acrylic) in #101 strawberry cream
- One pair each sizes 7 and 8 (4.5 and 5mm) needles OR SIZE TO OBTAIN GAUGE
- Size 6 (4mm) circular needle, 20"/50cm long
- Six ½-inch/13mm buttons

FINISHED MEASUREMENTS

- Bust 30 (32, 34, 36)"/76 (81.5, 86.5, 91.5)cm
- Length 22 (22½, 22½, 23)"/56 (57, 57, 58.5)cm
- Upper arm 12¼ (13, 13, 14)"/31 (33, 33, 35.5)cm

GAUGE

17 sts and 24 rows to 4"/10cm over rice pat st foll chart using large needles.

TAKE TIME TO CHECK YOUR GAUGE.

NOTE

The fit of this garment is close-fitting so that the finished bust measurement may actually be smaller than body bust size.

BACK

Work smaller needles, cast on 66 (70, 74, 78) sts. K 1 row. P 2 rows. Change to larger needles and p 1 row.

Beg chart pat

Row 1 (RS) Beg with st 2 (1, 1, 2), work rice pat foll chart, end with st 7 (10, 8, 7). Cont to foll chart in this way, AT SAME TIME, dec 1 st each side every 10th row 4 times—58 (62, 66, 70) sts. Work even until piece measures 9½"/24cm from beg. Inc 1 st each side of next row then every 10th row twice more—64 (68, 72, 76) sts. Work even until piece measures 14½"/37cm from beg.

Armhole shaping

Bind off 3 sts at beg of next 2 rows.

Dec row (RS) K2, p2tog, k to last 4 sts, p2tog, k2. Rep dec row every other row 3 (4, 4, 5) times



more—50 (52, 56, 58) sts. Work even until armhole measures 3½ (4, 4, 4½)"/9 (10, 10, 11.5)cm. Inc 1 st each side of next row then every 10th row once more—54 (56, 60, 62) sts. Work even until armhole measures 6½ (7, 7, 7½)"/16.5 (18, 18, 19)cm.

Neck and shoulder shaping

Next row (RS) Work 15 (16, 18, 19) sts, join a 2nd ball of yarn and bind off center 24 sts, work to end. Working both sides at once, bind off 4 sts from each neck edge twice, AT SAME TIME, when armhole measures 7 (7½, 7½, 8)"/18 (19, 19, 20.5)cm, shape shoulder by binding off 3 (4, 5, 5) sts from each

shoulder edge once and 4 (4, 5, 6) sts once.

FRONT

Work as for back to armhole.

Neck and armhole shaping

Next row (RS) Bind off 3 sts, work until there are 24 (26, 28, 30) sts on RH needle, join a 2nd ball of yarn and bind off center 10 sts, work to end. Cont to shape armhole as for back AT SAME TIME, work neck shaping on next RS row as foll: work to last 4 sts of first side, p2tog, k2; on 2nd side, k2, p2tog, work to end. Rep this neck dec every other row 14 times more. When all armhole dec's, then inc's are completed, there are 7 (8, 10,

11) sts each side for shoulders. When armholes measure same as back, shape shoulders as on back.

SLEEVES

With smaller needles, cast on 40 (44, 44, 48) sts. K 1 row. P 2 rows. Change to larger needles and p 1 row.

Beg chart pat

Row 1 (RS) Beg with st 1 (1, 1, 2), work rice st pat foll chart, end with st 10 (8, 8, 7). Cont to foll chart in this way, **AT SAME TIME**, inc 1 st each side every 10th row 6 times—52 (56, 56, 60) sts. Work even until piece measures 12"/30.5cm from beg.

Cap shaping

Bind off 3 sts at beg of next 2 rows. Work dec row as on back on next row then every other row 3 (4, 4, 5) times more, every 4th row 3 times. Bind off 2 sts at beg of next 8 rows. Bind off rem 16 (18, 18, 20) sts.

SCARF

With larger needles, cast on 11 sts. K 1 row, p3 rows. Work pat foll chart for scarf until piece measures approx 60"/152cm from beg.

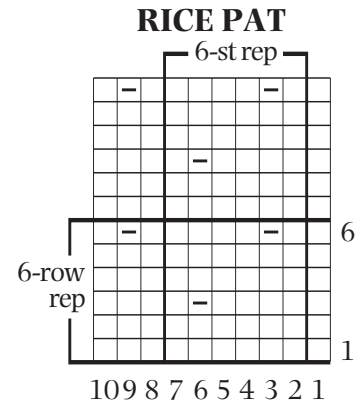
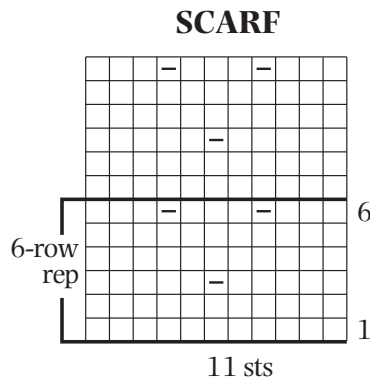
Next row (RS) Purl. P 1 row, k 1 row. Bind off purlwise.

FINISHING

Do not block pieces. Sew shoulder seams.

Neckband

With circular needle, pick up and k 43 sts from back neck edge, 36 sts from shaped front edge, 10 sts from center front, and 36 sts from shaped front. Join and p 1 rnd, k 2 rnds. Bind off knitwise. Set in sleeves. Sew side and sleeve seams. Sew the 6 buttons evenly spaced along the inside back neck edge (along the pick-up line). Using the loose st along the edge of the scarf, button the scarf to the neck as desired. ❀



Stitch Key

- K on RS, p on WS
- P on RS, k on WS

