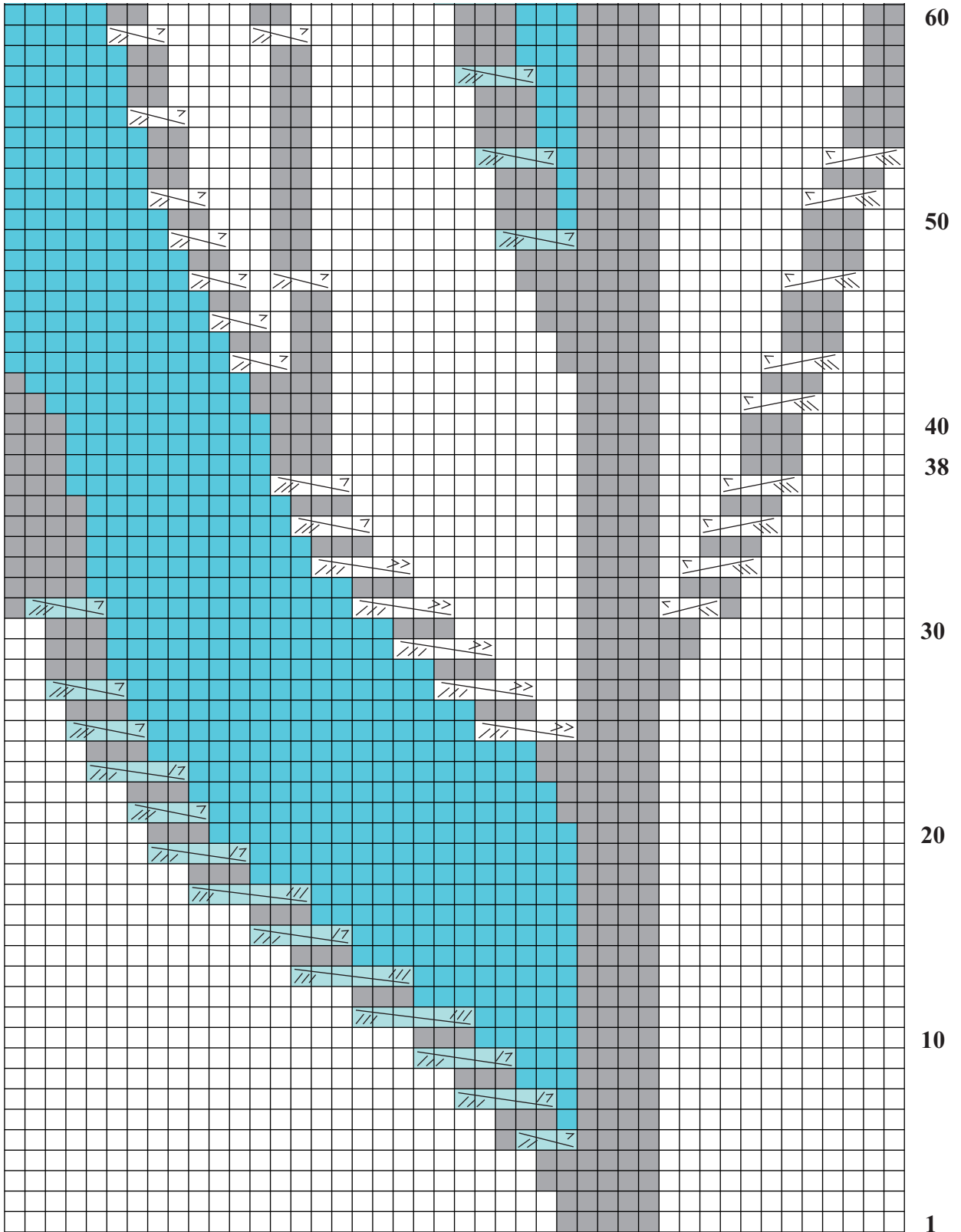


15 LEAF MOTIF PULLOVER

Loose-fitting pullover with knit-in traveling leaf motifs on the center front. Sized for X-Small, Small, Medium, Large, X-Large, XX-Large. Shown in size Small on page 62.

FIRST HALF
(Note: Row 60 is show in both charts)

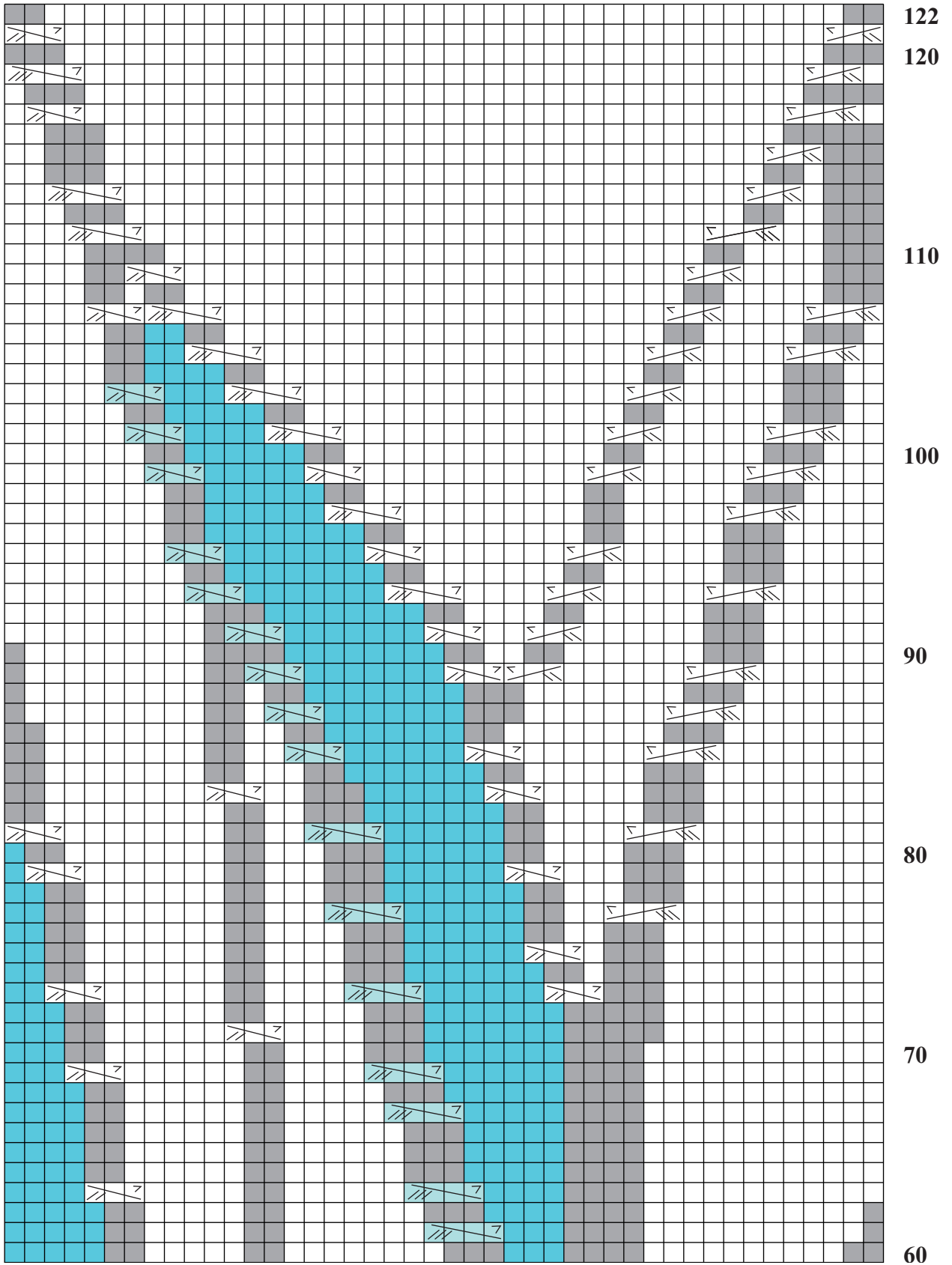


44 sts

15 LEAF MOTIF PULLOVER

Loose-fitting pullover with knit-in traveling leaf motifs on the center front. Sized for X-Small, Small, Medium, Large, X-Large, XX-Large. Shown in size Small on page 62.

SECOND HALF
(Note: Row 60 is show in both charts)



15 LEAF MOTIF PULLOVER

Loose-fitting pullover with knit-in traveling leaf motifs on the center front. Sized for X-Small, Small, Medium, Large, X-Large, XX-Large. Shown in size Small on page 62.

Stitch Key

 P on RS, k on WS

 K on RS, p on WS

 Seed st

 Slip 1 st to cn and hold to back, k2, p1 from cn.

 Slip 2 sts to cn and hold to front, p1, k2 from cn.


 Slip 2 sts to cn and hold to front, p1 (or k1 to cont seed st), k2 from cn.


 Slip 1 st to cn and hold to back, k3, p1 from cn.

 Slip 3 sts to cn and hold to front, p1, k3 from cn.

 Slip 3 sts to cn and hold to front, p1 (or k1 to cont seed st), k3 from cn.

 LPC Slip 3 sts to cn and hold to front, p2, k3 from cn.

 Slip 3 sts to cn and hold to front, p1, k1
(or k1, p1 to cont seed st), k3 from cn.

 Slip 3 sts to cn and hold to front, p1, k1, p1
(or k1, p1, k1 to cont seed st), k3 from cn.