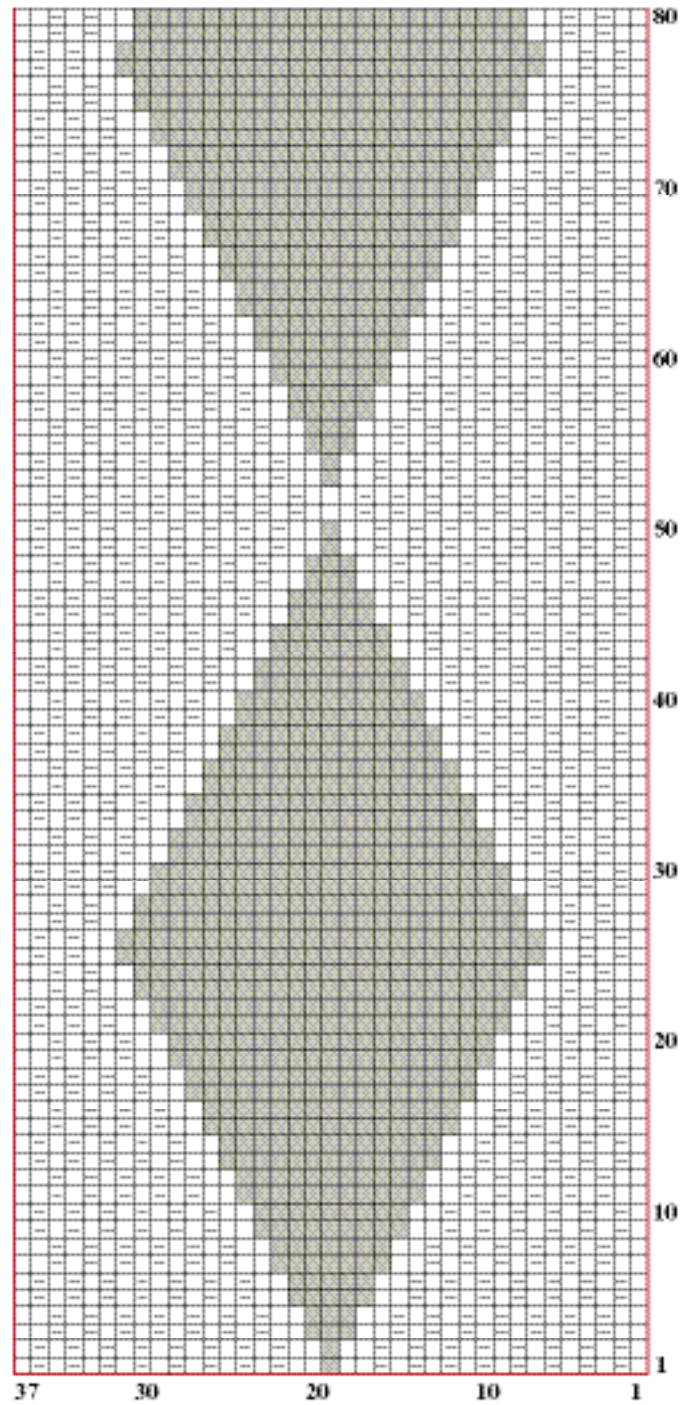


**Stitch Key**

- K on RS, p on WS with A
- K on RS, p on WS with B
- ▤ P on RS, k on WS
- ▥ K2tog
- ▦ Skp

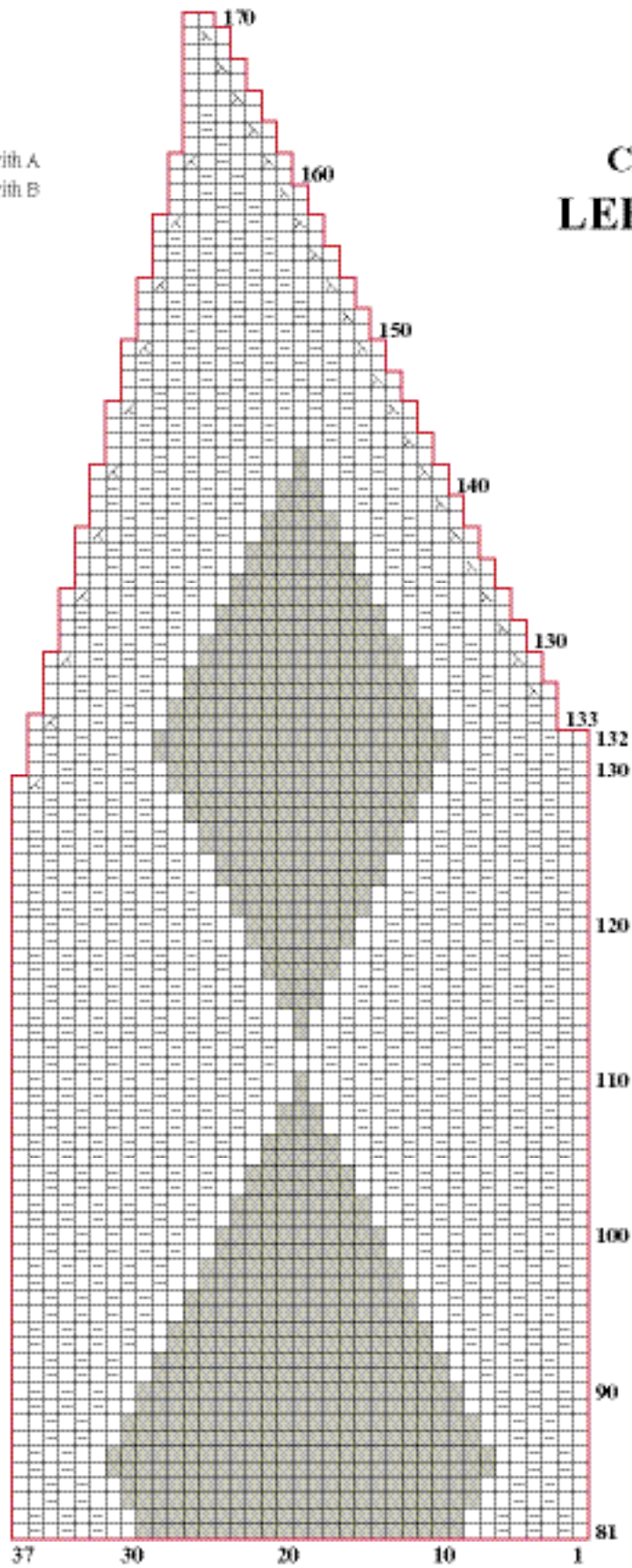


**MEDIUM/LARGE CARDIGAN  
LEFT SIDE** (reverse for right side)

**MEDIUM/  
LARGE  
CARDIGAN  
LEFT SIDE  
(reverse  
right side)**

**Stitch Key**

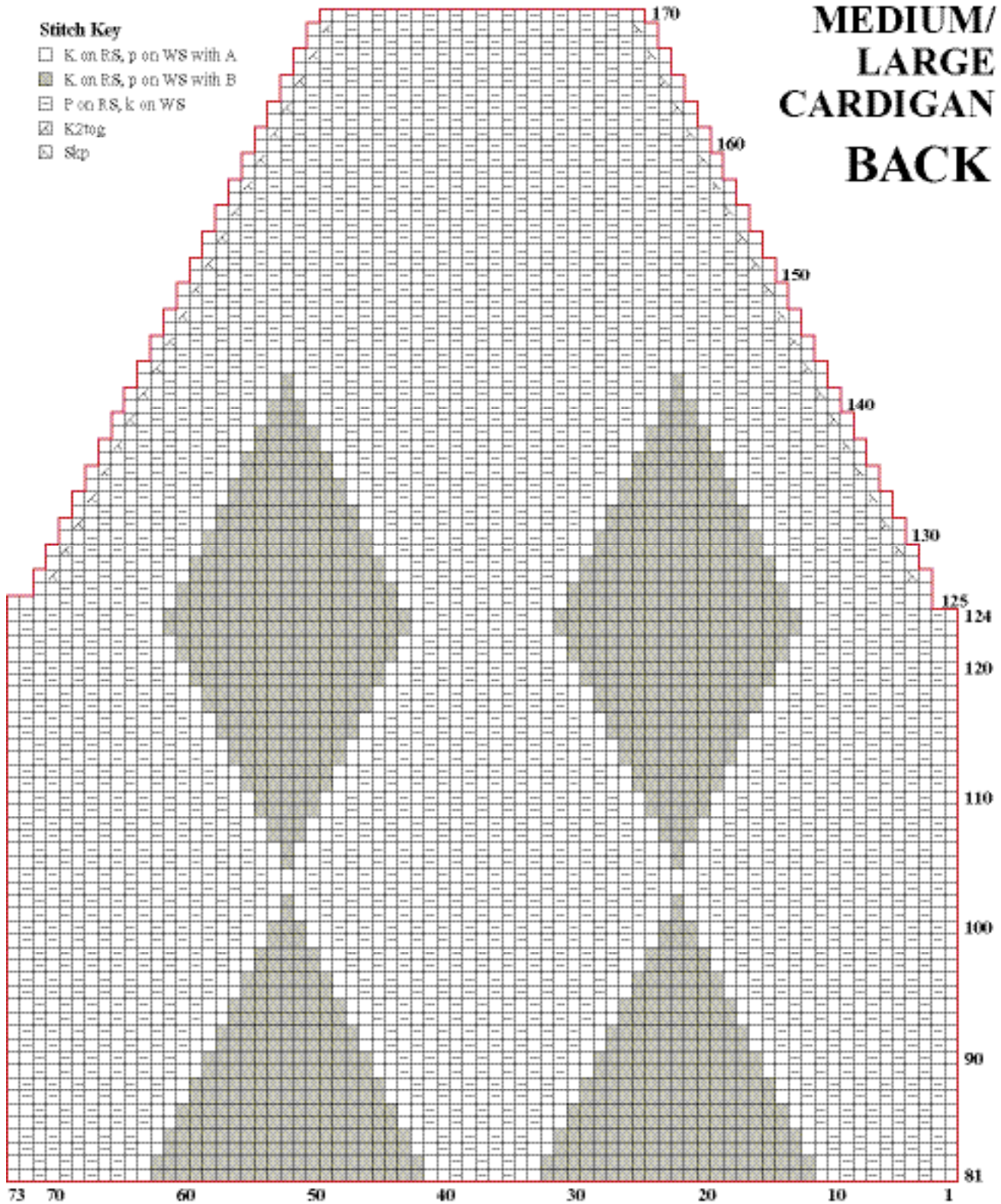
- K on R.S, p on WS with A
- K on R.S, p on WS with B
- P on R.S, k on WS
- K2tog
- Skp



# MEDIUM/ LARGE CARDIGAN BACK

## Stitch Key

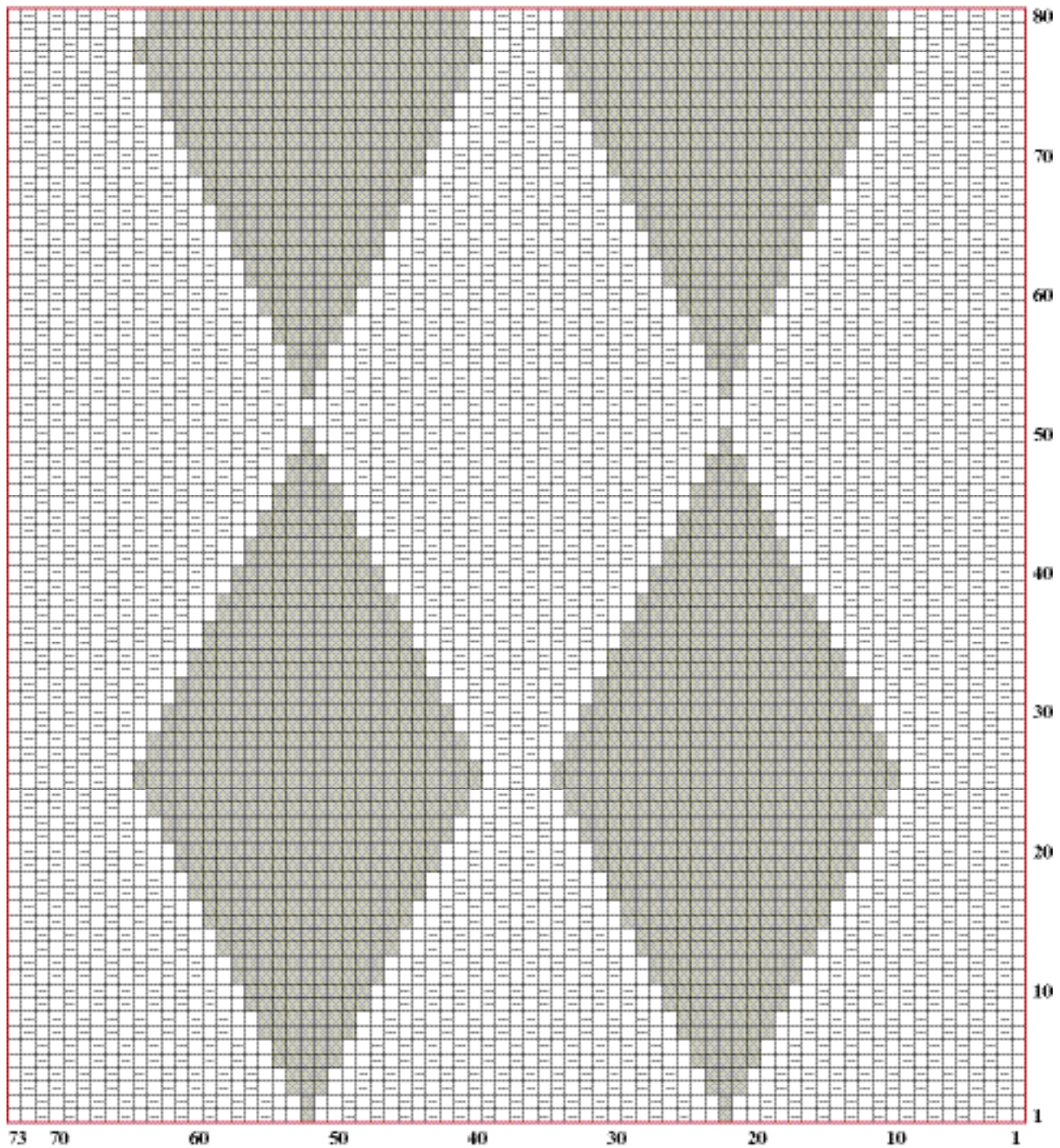
- K. on RS, p on WS with A
- K. on RS, p on WS with B
- P on RS, k on WS
- K2tog
- Stp



# MEDIUM/ LARGE CARDIGAN BACK

## Stitch Key

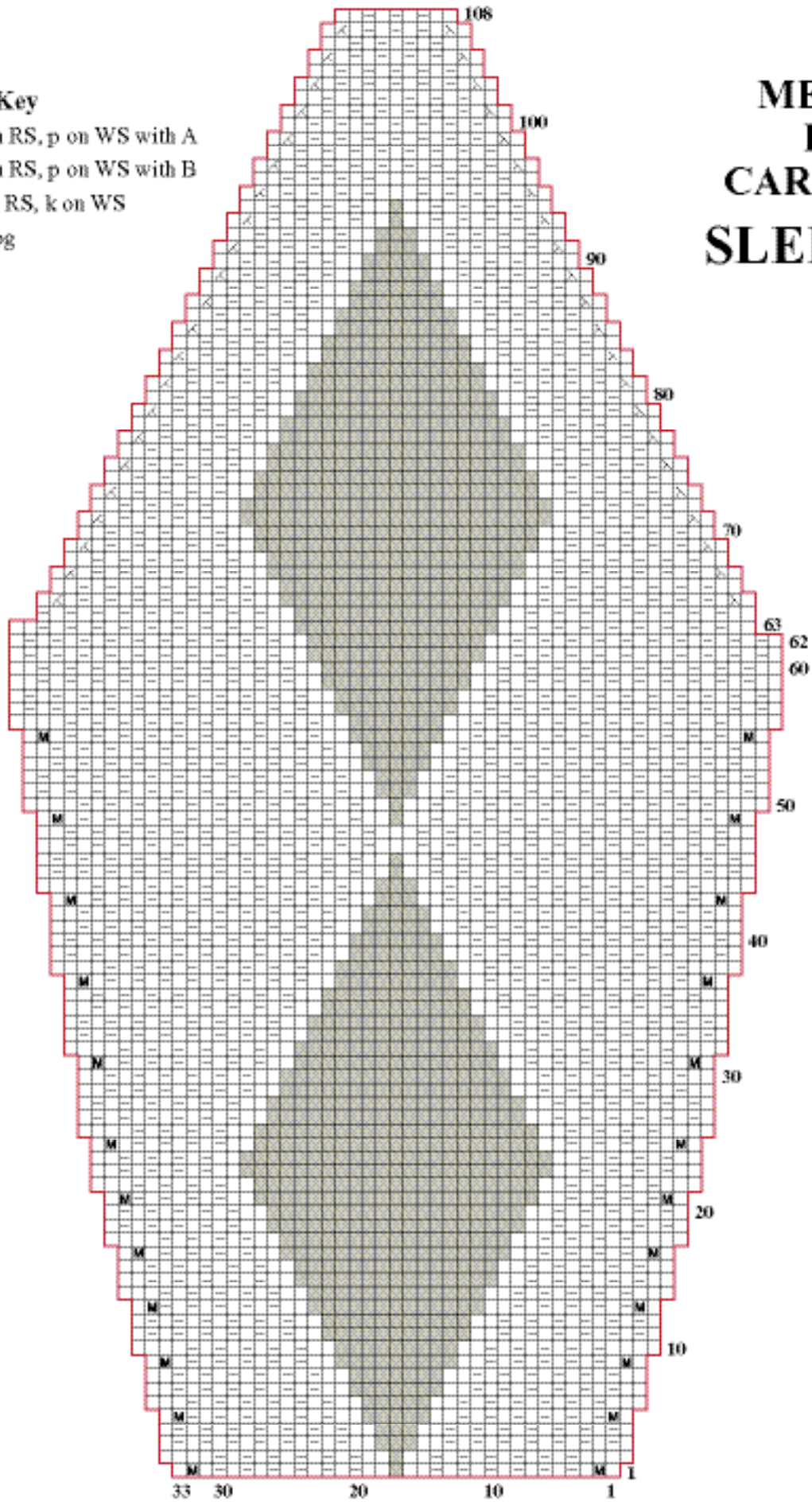
- K on RS, p on WS with A
- K on RS, p on WS with B
- P on RS, k on WS
- K2tog
- Skp



# MEDIUM/ LARGE CARDIGAN SLEEVES

**Stitch Key**

- K on RS, p on WS with A
- K on RS, p on WS with B
- P on RS, k on WS
- K2tog
- Ssk
- M1

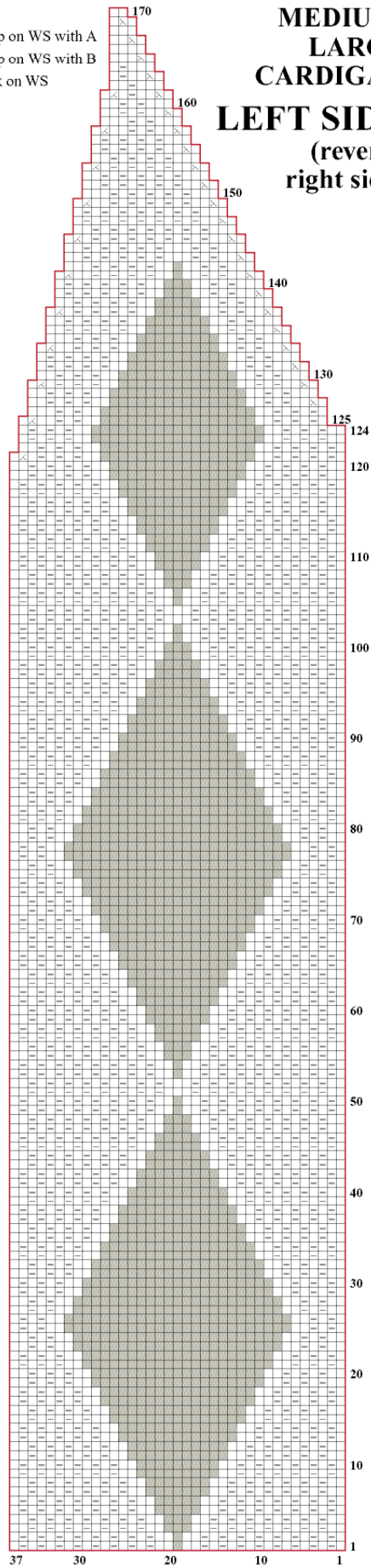


**Stitch Key**

- K on RS, p on WS with A
- K on RS, p on WS with B
- ▣ P on RS, k on WS
- ⊠ K2tog
- ⊞ Skp

**MEDIUM/  
LARGE  
CARDIGAN**

**LEFT SIDE  
(reverse  
right side)**



**Stitch Key**

- K on RS, p on WS with A
- K on RS, p on WS with B
- P on RS, k on WS
- K2tog
- Skp

**MEDIUM/  
LARGE  
CARDIGAN  
BACK**

