

1 LANTERN CHART

Shown in *VK* Fall 2008 on page 58. Instructions begin on page 116.



BODY

When ribbing measures 2 inches, dec 0 (1, 0, 1, 0, 1, 0) sts across last row—134 (148, 164, 178, 194, 208, 224) sts.

Next row (RS) With larger needles and MC, k1, [p1, k1] 5 times, then beg with st 21 (14, 6, 31, 23, 16, 8) of Lantern Chart, work thru st 32, rep 32-st Lantern chart 3(3, 3, 4, 5, 5, 5) times, work sts 1 thru 4(11, 19, 26, 2, 9, 17), then with MC only, k1, [p1, k1] 5 times. Work even. . . .

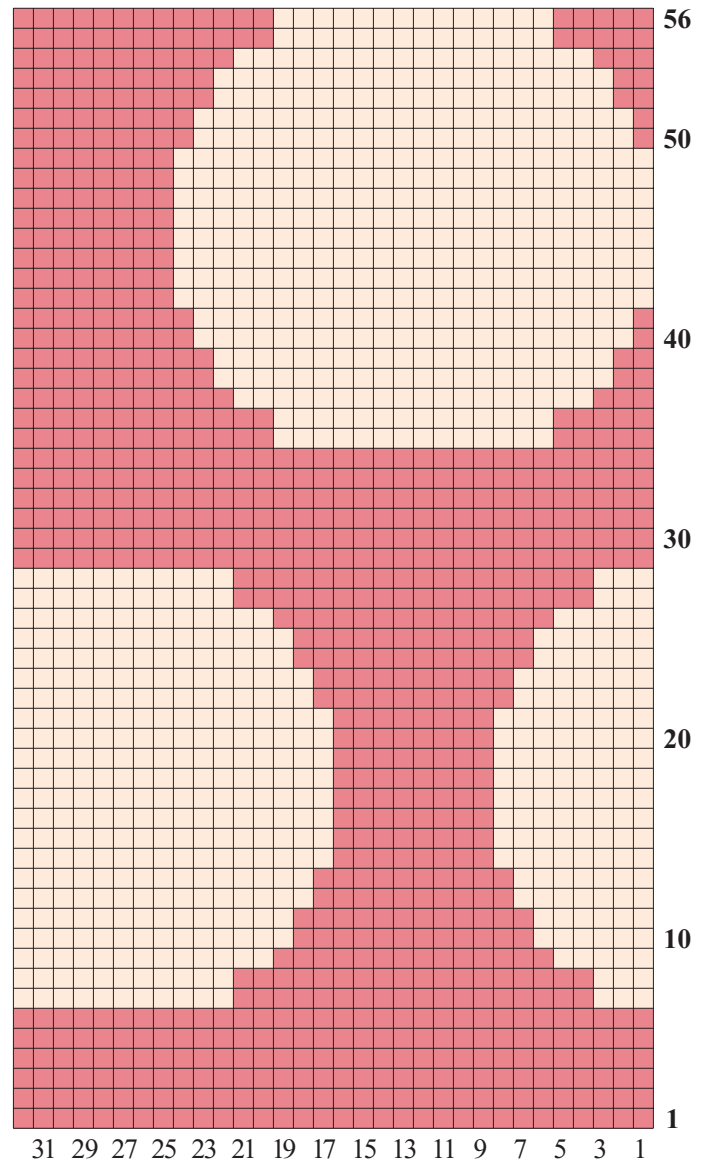
SLEEVES

With smaller needle and MC. . . .

Row 1 (RS) K0 (0, 0, 0, 0, 3, 3), *p2, k3; rep from * to end.

Row 2 (WS) *P3, k2; rep from *, end p0 (0, 0, 0, 0, 3, 3). . . .

LANTERN CHART



Color Key

- Claret (MC)
- Ghost (CC)