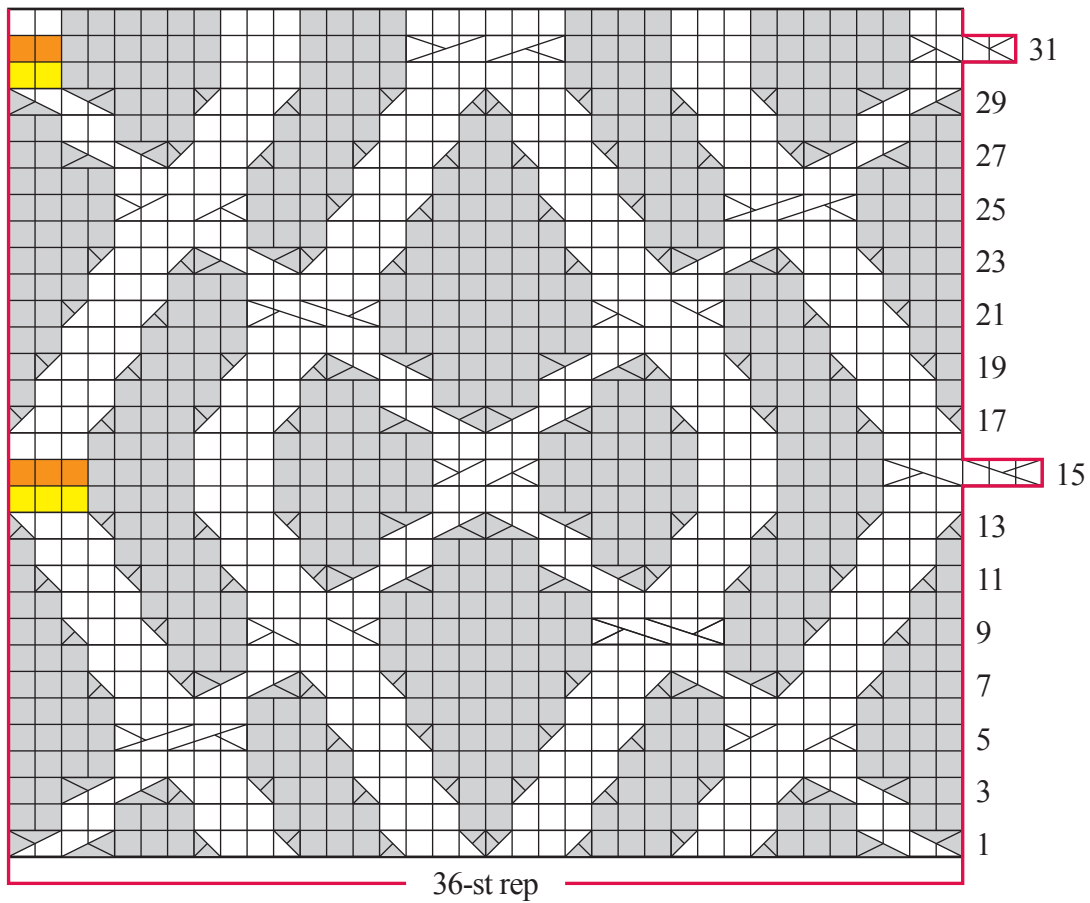


## CABLE PATTERN



### Stitch Key

□ k on RS, p on WS

■ p on RS, k on WS

■ on all reps except for last rep, knit these sts; on last rep of rnd only, sl these sts to RH needle, remove original beg-of-rnd marker, sl these sts back to LH needle, then place marker for new beg of rnd

■ on all reps except for last rep, do not work these sts; on last rep of rnd only, remove beg-of-rnd marker, knit these sts, then place marker for new beg of rnd

⊠ 2/2 LC

⊠ 2/2 RC

⊠ 2/2 LPC

⊠ 2/2 RPC

⊠ 2/3 LC

⊠ 2/3 RC

⊠ 3/1 LPC

⊠ 3/1 RPC

⊠ 3/2 LC

⊠ 3/2 RC

⊠ 3/3 LC

⊠ 3/3 RC