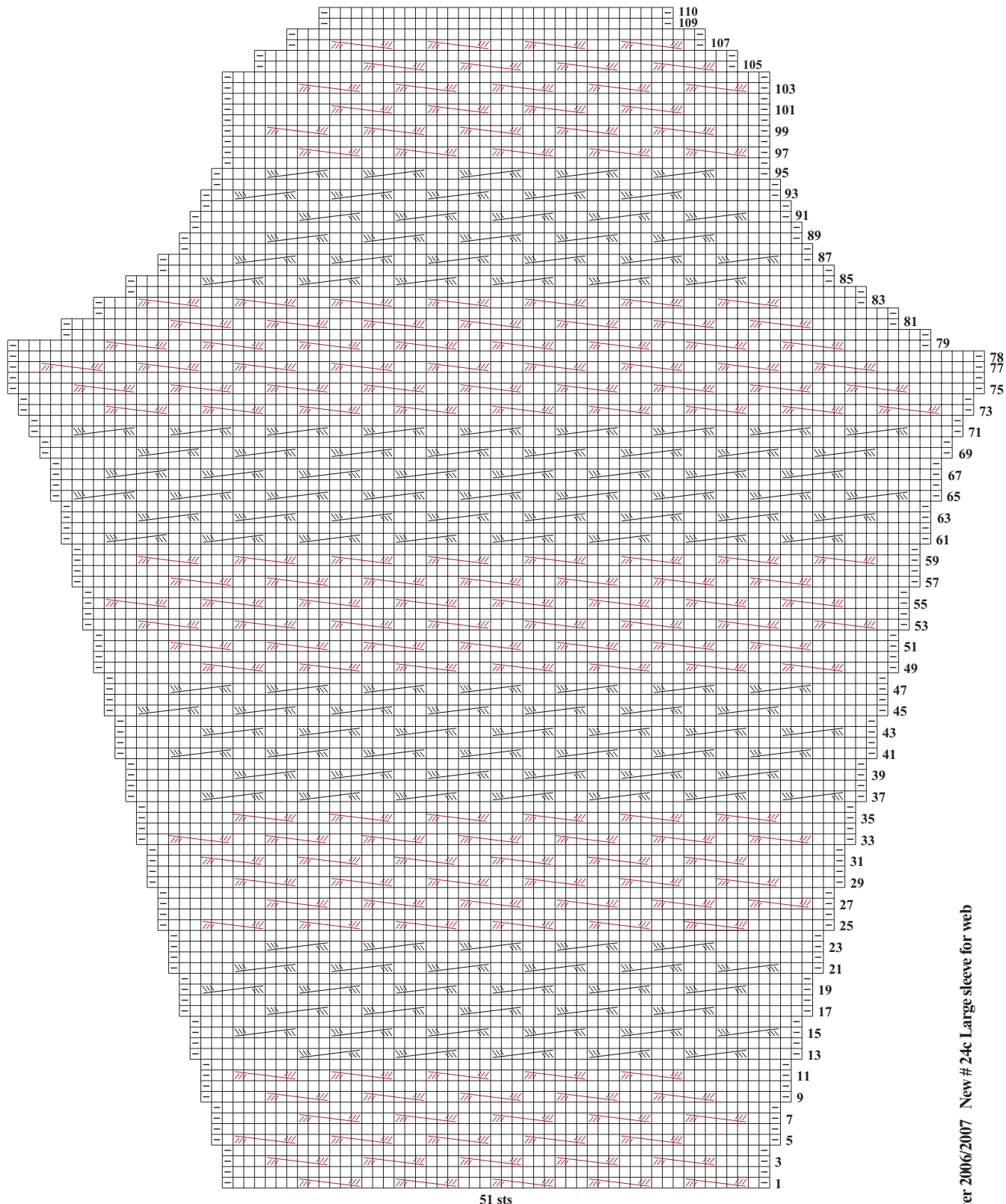


# SLEEVE, LARGE

33 sts



51 sts

### Stitch Key

- K on RS, p on WS
- P on RS, k on WS
- ▨ 6-st RC
- ▨ 6-st LC

### Cabled sleeve instruction errata:

*Photo on page 95, instructions begin on page 129.*

The increases for the size large are incorrect, replace with the following:  
 With 2 strands of yarn. . .  
 Work in Chart pat inc 1 st each side every 4th row 17 times,  
 every other row 0(3) times—85(91) sts.