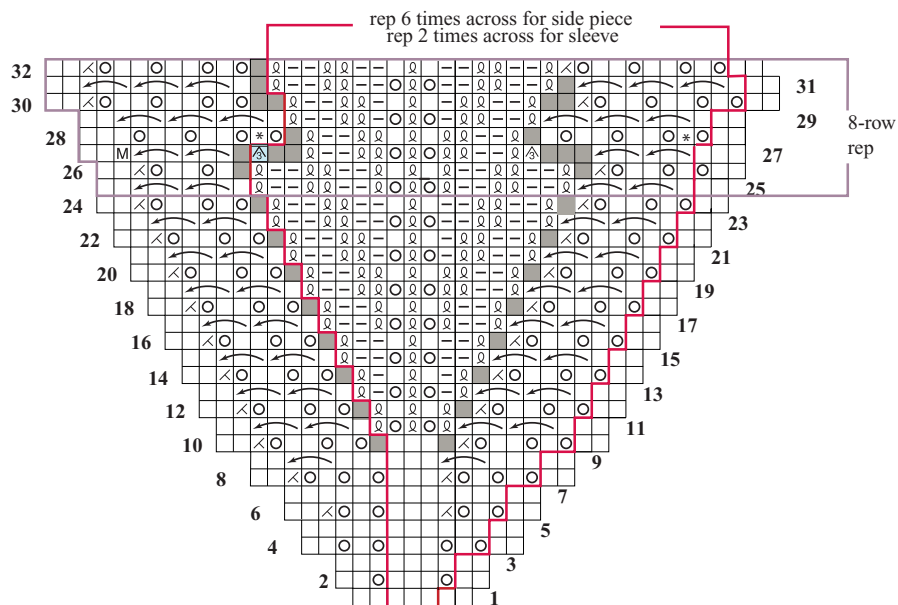


29 CROPPED LACE JACKET

Close-fitting, short-sleeved cropped jacket in lace patterns, worked in pieces. From Early Fall 2010. Shown on page 83.

CHART 2




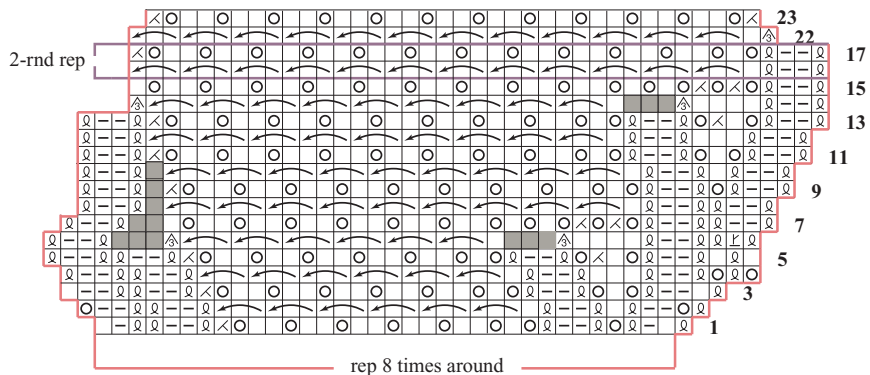
*Purl with the st resulting from  on row 27, excluding last rep

CHART 3a (body)



29 CROPPED LACE JACKET

Close-fitting, short-sleeved cropped jacket in lace patterns, worked in pieces. From Early Fall 2010. Shown on page 83.

Stitch Key

- K on RS, p on WS
- P on RS, k on WS
- K2tog on RS, p2tog on WS
- SKP
- Yo
- K1 tbl on RS, p1 tbl on WS
- No stitch
- K3p

- SK3P
- M1
- K1, p1 in same stitch
- K1, p1, k1 in same stitch
- P in front and back of st
- P1, k1 in same stitch
- Kk2p
- Boxed 3-st rep

