

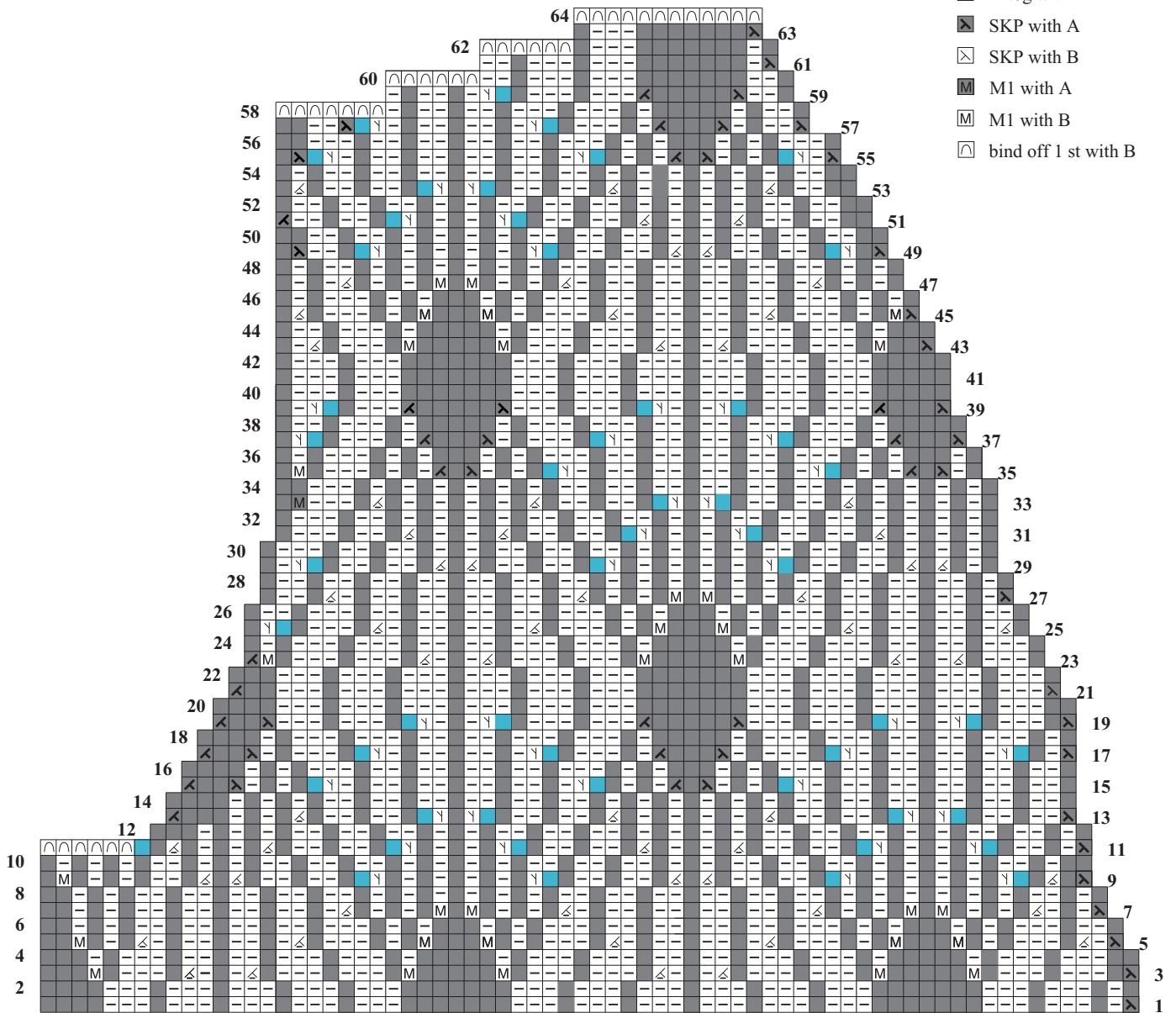
21 TWO-COLOR RIB CARDI

In Winter 2010/11, standard-fitting cardigan in 2-color rib pattern with shaped waistline and small shawl collar. Sized for X-Small/Small, Medium/Large. Shown in size X-Small/Small on page 68.

Stitch Key

- k on RS, p on WS with A
- p on RS, k on WS with B
- ⊠ p2tog with B
- ⊞ kfb with B
- no stitch
- ⊠ k2tog with A
- ⊠ k2tog with B
- ⊠ SKP with A
- ⊠ SKP with B
- ⊠ M1 with A
- ⊠ M1 with B
- ⊠ bind off 1 st with B

CHART D - RIGHT FRONT



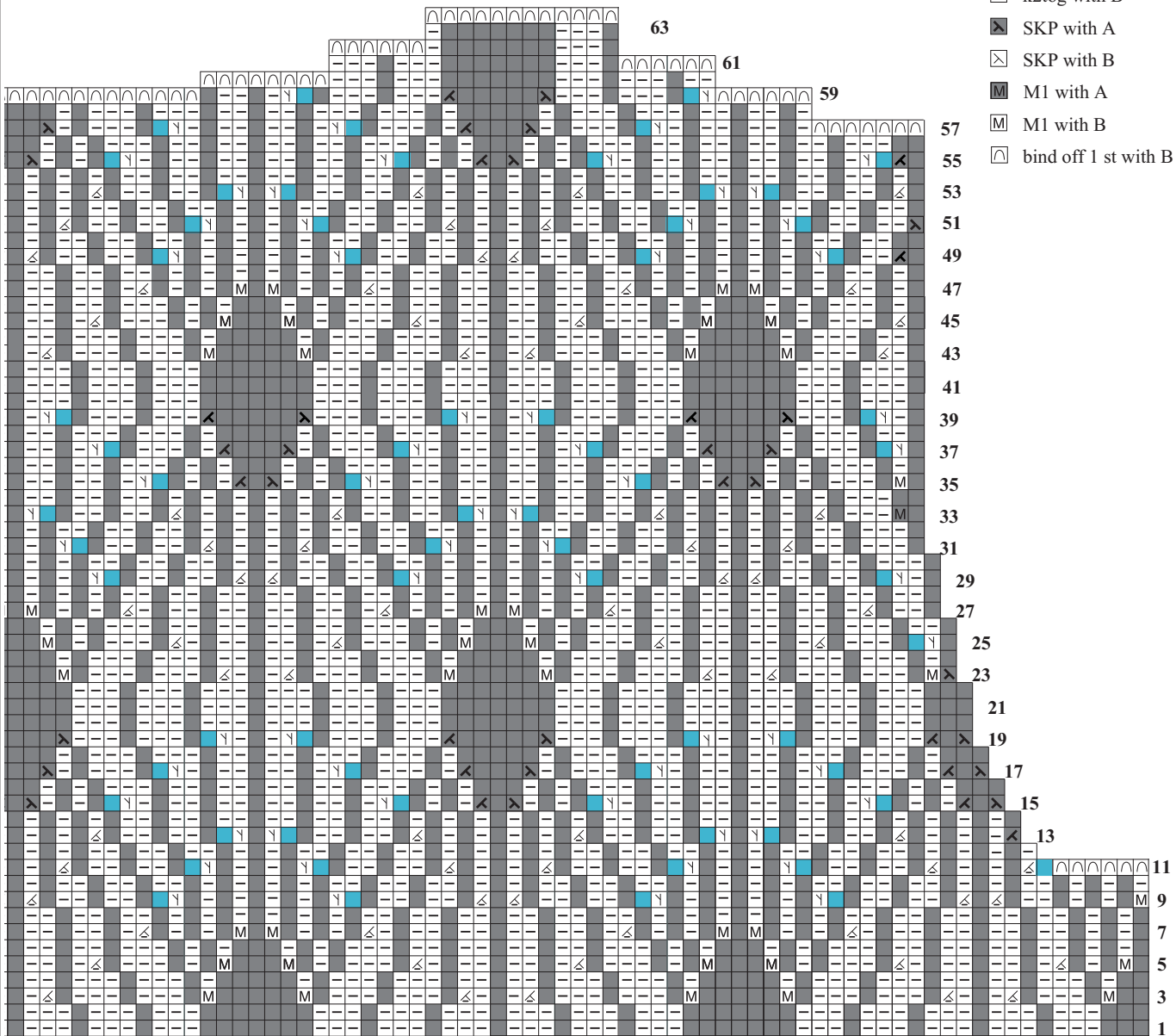
21 TWO-COLOR RIB CARDI

In Winter 2010/11, standard-fitting cardigan in 2-color rib pattern with shaped waistline and small shawl collar. Sized for X-Small/Small, Medium/Large. Shown in size X-Small/Small on page 68.

CHART D - BACK

Stitch Key

- k on RS, p on WS with A
- p on RS, k on WS with B
- ⊠ p2tog with B
- ⊡ kfb with B
- no stitch
- ⊞ k2tog with A
- ⊟ k2tog with B
- ⊠ SKP with A
- ⊡ SKP with B
- ⊞ M1 with A
- ⊟ M1 with B
- ⊠ bind off 1 st with B



CENTER ST

NOTE
Center st shown twice for back but should only be knit once.

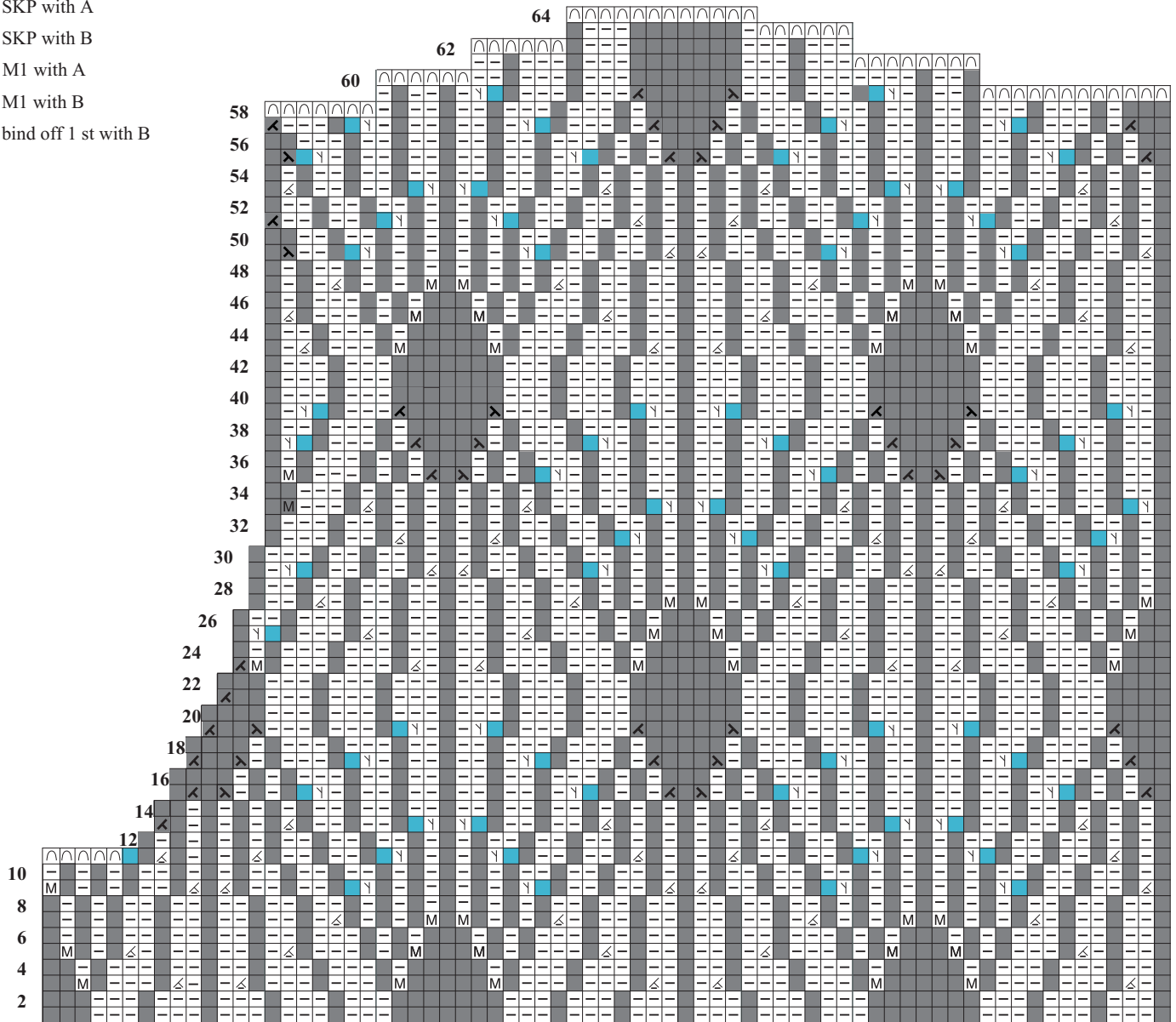
21 TWO-COLOR RIB CARDI

In Winter 2010/11, standard-fitting cardigan in 2-color rib pattern with shaped waistline and small shawl collar. Sized for X-Small/Small, Medium/Large.
Shown in size X-Small/Small on page 68.

Stitch Key

- k on RS, p on WS with A
- p on RS, k on WS with B
- ⊗ p2tog with B
- ⌞ kfb with B
- no stitch
- ⊗ k2tog with A
- ⊗ k2tog with B
- ⊗ SKP with A
- ⊗ SKP with B
- Ⓜ M1 with A
- Ⓜ M1 with B
- ⌞ bind off 1 st with B

CHART D - BACK



NOTE
Center st shown twice for back
but should only be knit once.

CENTER ST

21 TWO-COLOR RIB CARDI

In Winter 2010/11, standard-fitting cardigan in 2-color rib pattern with shaped waistline and small shawl collar. Sized for X-Small/Small, Medium/Large. Shown in size X-Small/Small on page 68.

Stitch Key

- k on RS, p on WS with A
- p on RS, k on WS with B
- ◊ p2tog with B
- ⌞ kfb with B
- no stitch
- ⊠ k2tog with A
- ⊠ k2tog with B
- ⊠ SKP with A
- ⊠ SKP with B
- ⊠ M1 with A
- ⊠ M1 with B
- ⊠ bind off 1 st with B

CHART D - LEFT FRONT

