

31 LACE STOCKINGS

Shown in Spring/Summer 2009 on page 81. Instructions begin on page 112.

Clarifications

GUSSET

Beg chart 2

Work chart 2 through WS row 16—25 heel sts rem.

LEG

Join to work in rnd.

Rnd 17 (RS) Sl 1, k1, pm for new beg of rnd, work to end of rnd 17 over rem sts.

Cont to follow chart 2 until rnd 32 has been worked, then work 12-rnd rep twice more.

CALF

Beg chart 3

Change to larger needles.

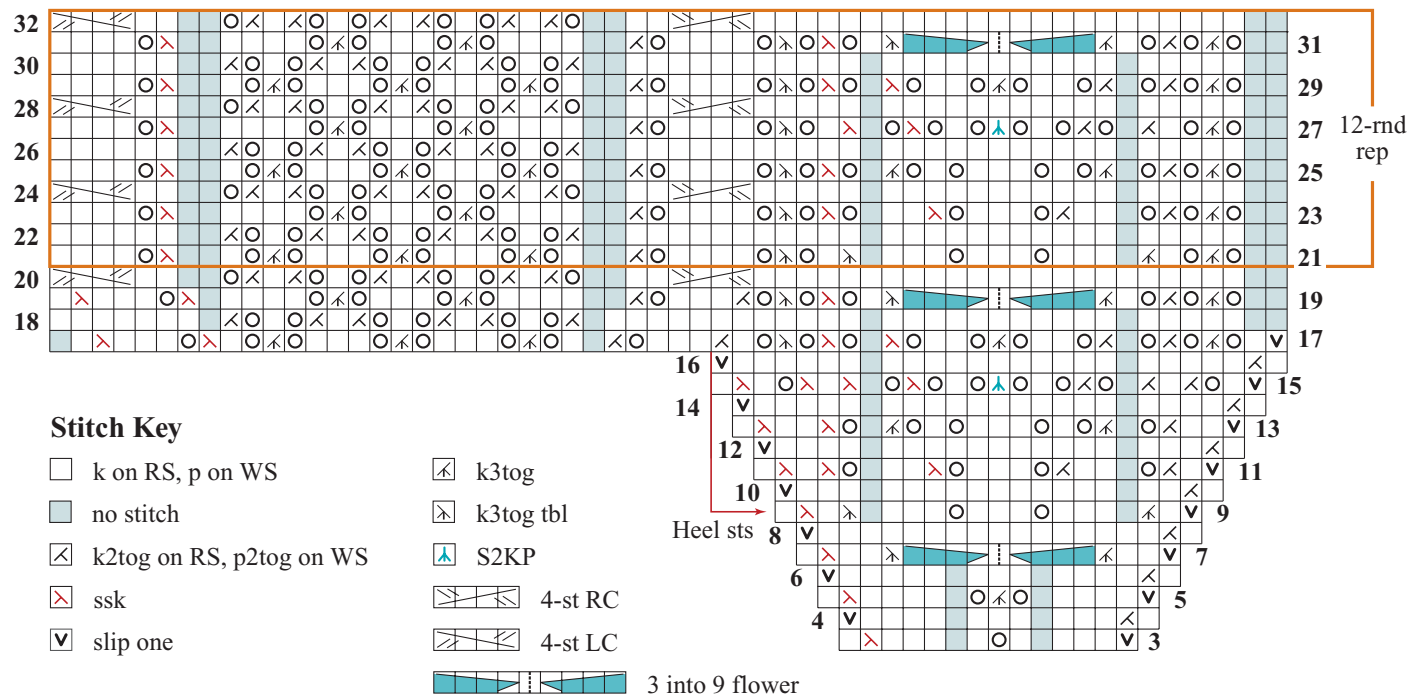
Work chart 3 until rnd 36 has been worked, then work 12-rnd rep until there are 9 complete flowers and the beginning of the 10th flower on the back leg, ending with rnd 36.

CUFF

Beg chart 4

Work rows 1-51 of chart 4. Continue with pattern as written.

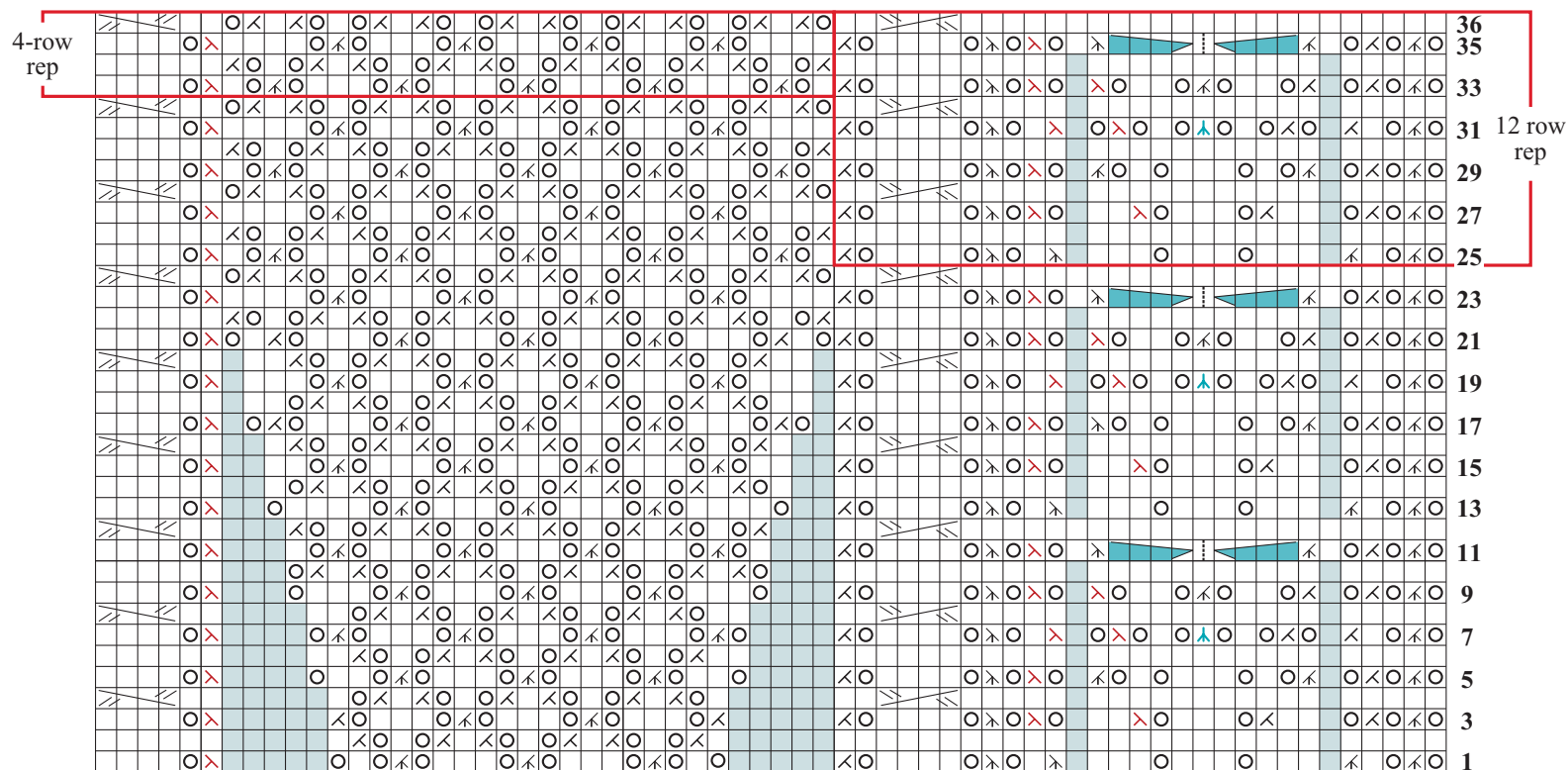
CHART 2



31 LACE STOCKINGS (CONTINUED)

Shown in Spring/Summer 2009 on page 81. Instructions begin on page 112.

CHART 3



Stitch Key

□ k on RS

■ no stitch

⌗ k2tog

⌘ ssk

○ yo

⌗ k3tog

⌘ k3togtbl

⌗ S2KP

⌗ 4-st RC

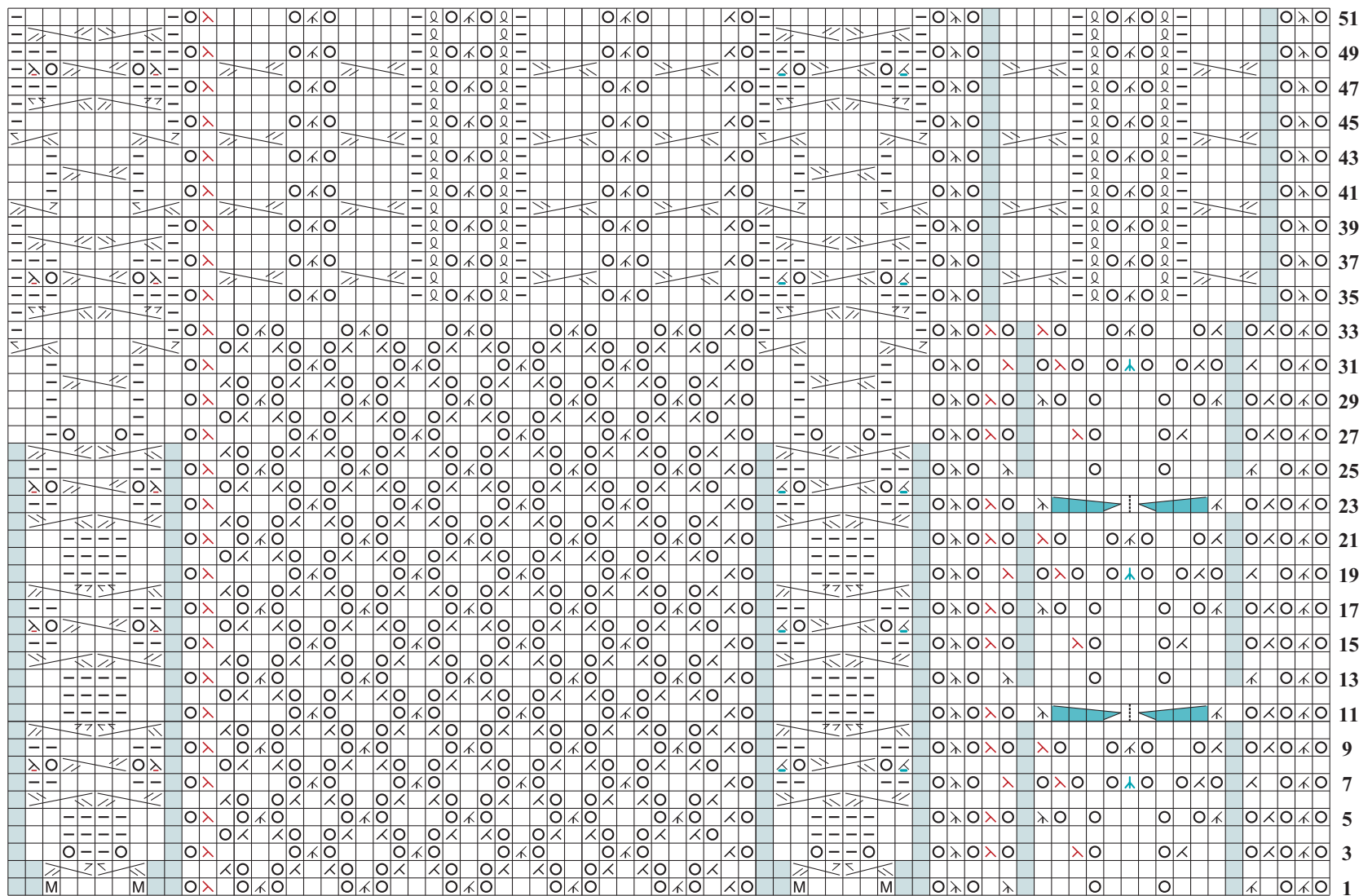
⌗ 4-st LC

⌗ 3 into 9 flower

31 LACE STOCKINGS (CONTINUED)

Shown in Spring/Summer 2009 on page 81. Instructions begin on page 112.

CHART 4



Stitch Key

k on RS	k2tog	p2togtbl	k3tog	S2KP	3-st RPC	4-st RPC
p on RS	ssk	k1tbl	k3togtbl	4-st RC	3-st LPC	4-st LPC
no stitch	p2tog	yo	m1	4-st LC	3 into 9 flower	