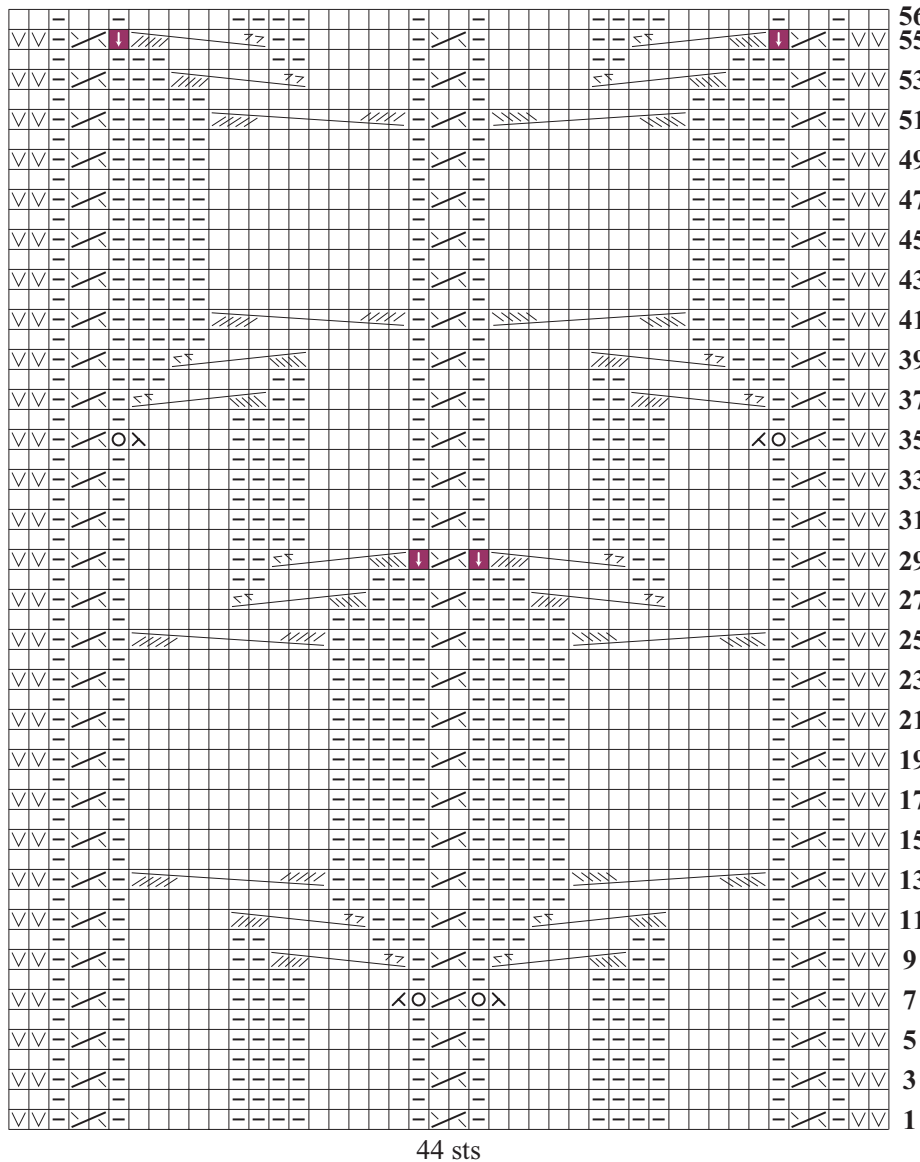


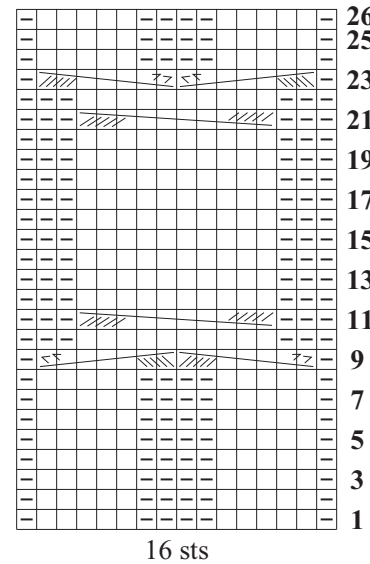
26 DROP ST CABLE CARDI

Shown in *VK* Fall 2008 on page 103. Instruction on pages 140 & 141.

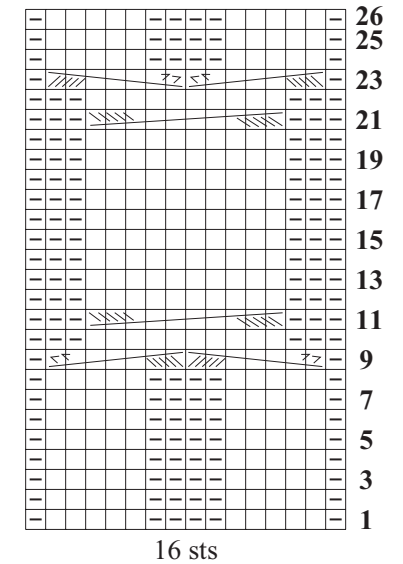
CABLE BAND CHART



LEFT SLEEVE CHART



RIGHT SLEEVE CHART



Stitch Key

- K on RS, p on WS
- P on RS, k on WS
- Sl st
- Yo
- K2tog
- Ssk

- Drop stitch down to yo
- RT
- 7-st RPC
- 7-st LPC
- 10-st RC
- 10-st LC