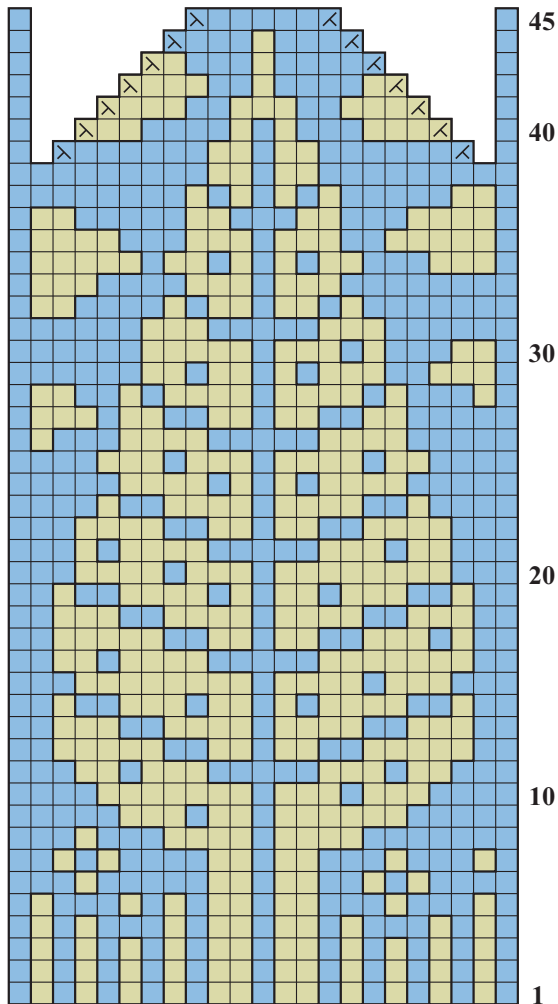


32 TREE MITTENS

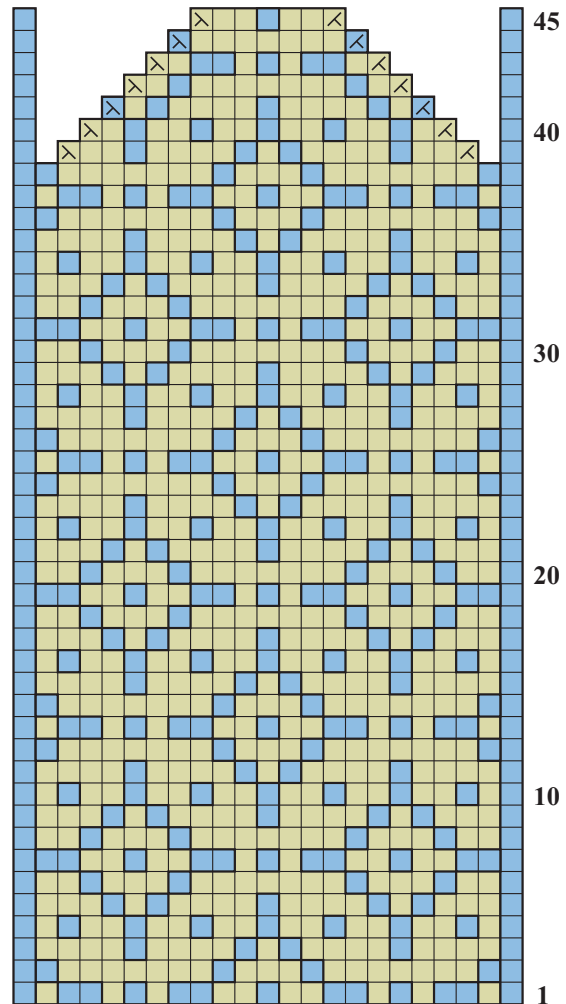
Shown in Winter 2009 on page 38. Instructions begin on page 105.

CHART 1 (Back of Hand)



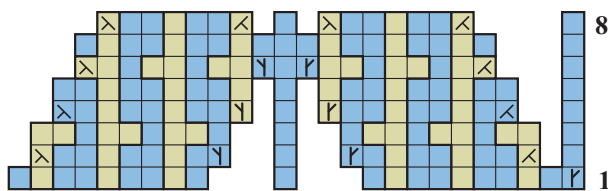
23 sts

CHART 2 (Palm)



23 sts

THUMB CHART



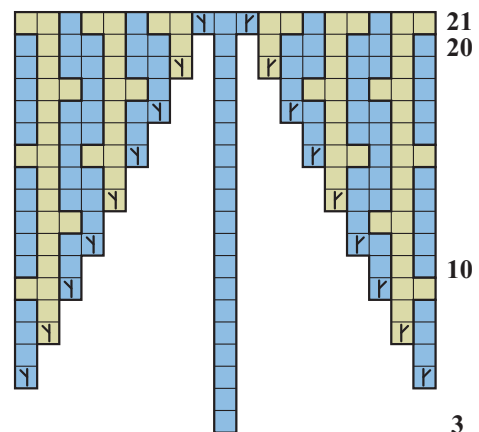
Color Key

- Blue (A)
- Green (B)

Stitch Key

- ↗ M1R
- ↘ M1L
- ⊗ k2tog
- ⊗ ssk

GUSSET CHART



3