

ADDITIONS FOR VOGUE KNITTING FALL 2005

Instructions and chart for the web

18 LACE SHAWL

by Meg Swansen

Instructions on pages 124 and 125

CHART 1 Lace Pattern

Work Row 1 of Chart 1 as follows: work from st 1 to 9-st rep, work 9-st rep 6 times, work to end of Row 1. When Rows 1–8 have been worked 37 times, work Row 1 once more.

Next row (WS) [K2, k2tog] 9 times, [k3, k2tog] 6 times. Leave rem 55 sts on needle.

CHART 2 Border

Note Border is joined to scarf sts on needle at end of every RS row.

With CC, loosely cast on 23 sts.

Beg with Row 1 of Chart 2 and work rows 1–18 six times.

Follow instructions to end of pattern as written in magazine.

CHART 1—Lace Pattern

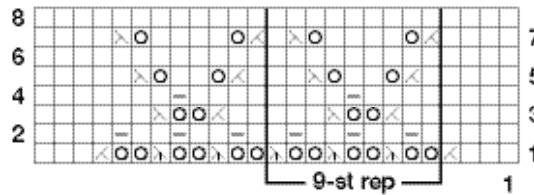
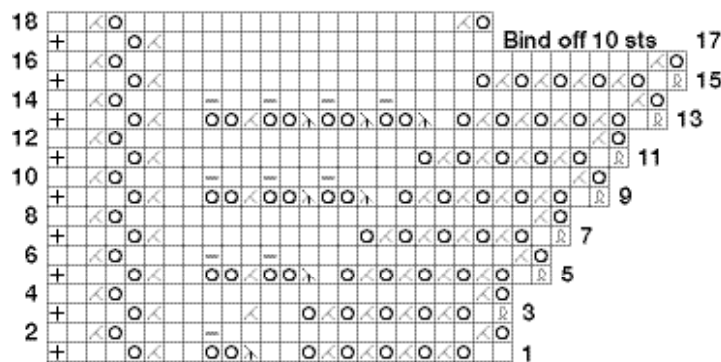


CHART 2—Border



Stitch Key

- | | |
|----------------|--------------------------------|
| K on RS and WS | Ssk |
| P on WS | Sk2p |
| Yarn over | K last st tog w/first shawl st |
| K2tog | K tbl into yo |