

19 LACE SHAWL

by Shirley Paden

Instructions on pages 125 and 126

CHART 1 Webs, spiders and diamonds SHAWL CENTER

With size 8 needles cast on 111 sts using the long tail cast on. Change to size 6 needles and work Row 1 of Chart 1 as follows: work selvage st, work across 6 plus sts, rep multiple of 12 sts eight times, work across 7 plus sts, work selvage st. Follow chart and work Rows 1–36 five times.

Follow instructions for Shawl Center up until 'Edging' as written in magazine.

CHART 2 Lace and diamonds edging EDGING

With size 8 needle, cast on 10 sts using the long tail cast on. Change to size 6 needles. Beg with Row 1 of Chart 2 and work rows 1–14 until edging is long enough to completely border the shawl and collar—approx 80 reps. Bind off.

Follow instructions to end of pattern as written in magazine.

CHART 1—Webs, Spiders and Diamonds

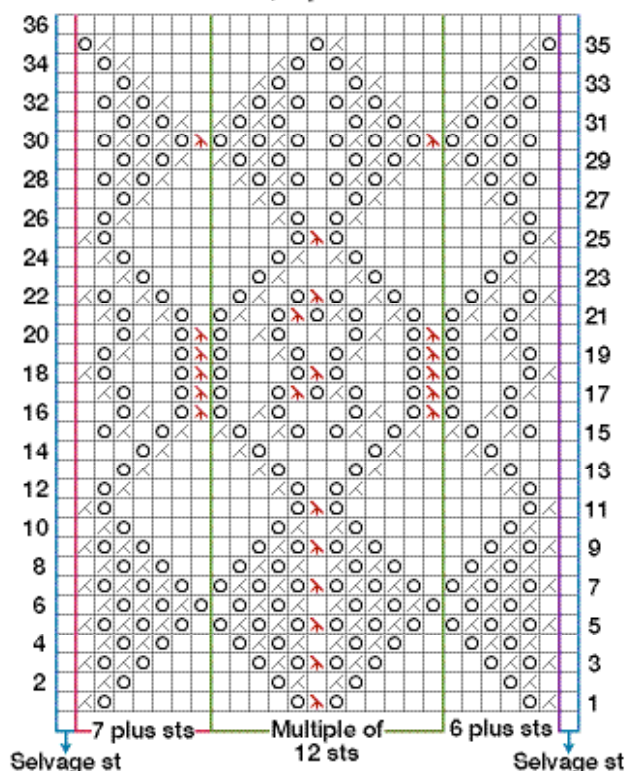


CHART 2—Lace and Diamond Edgings

