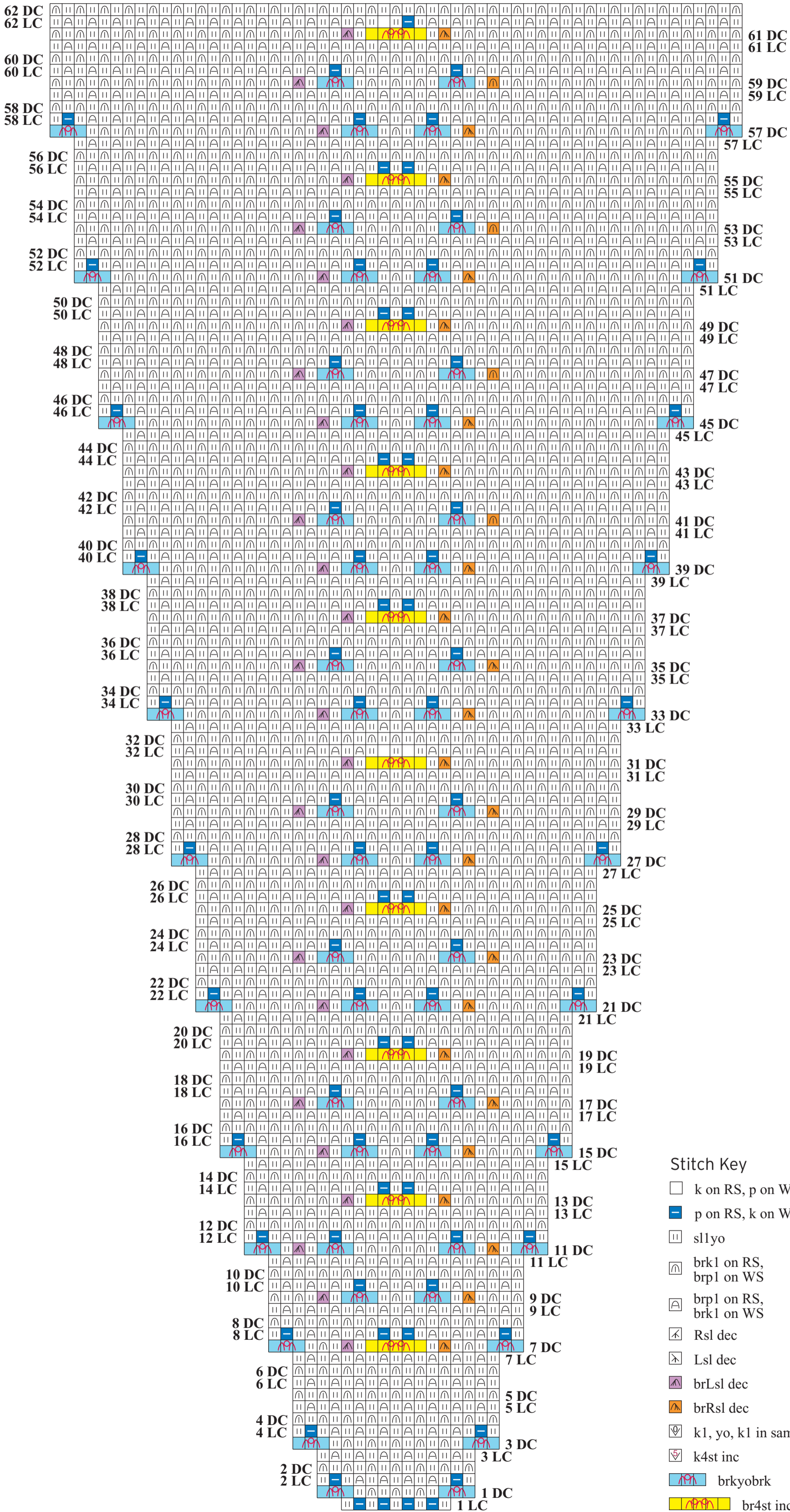


CHART 2 - SLEEVE

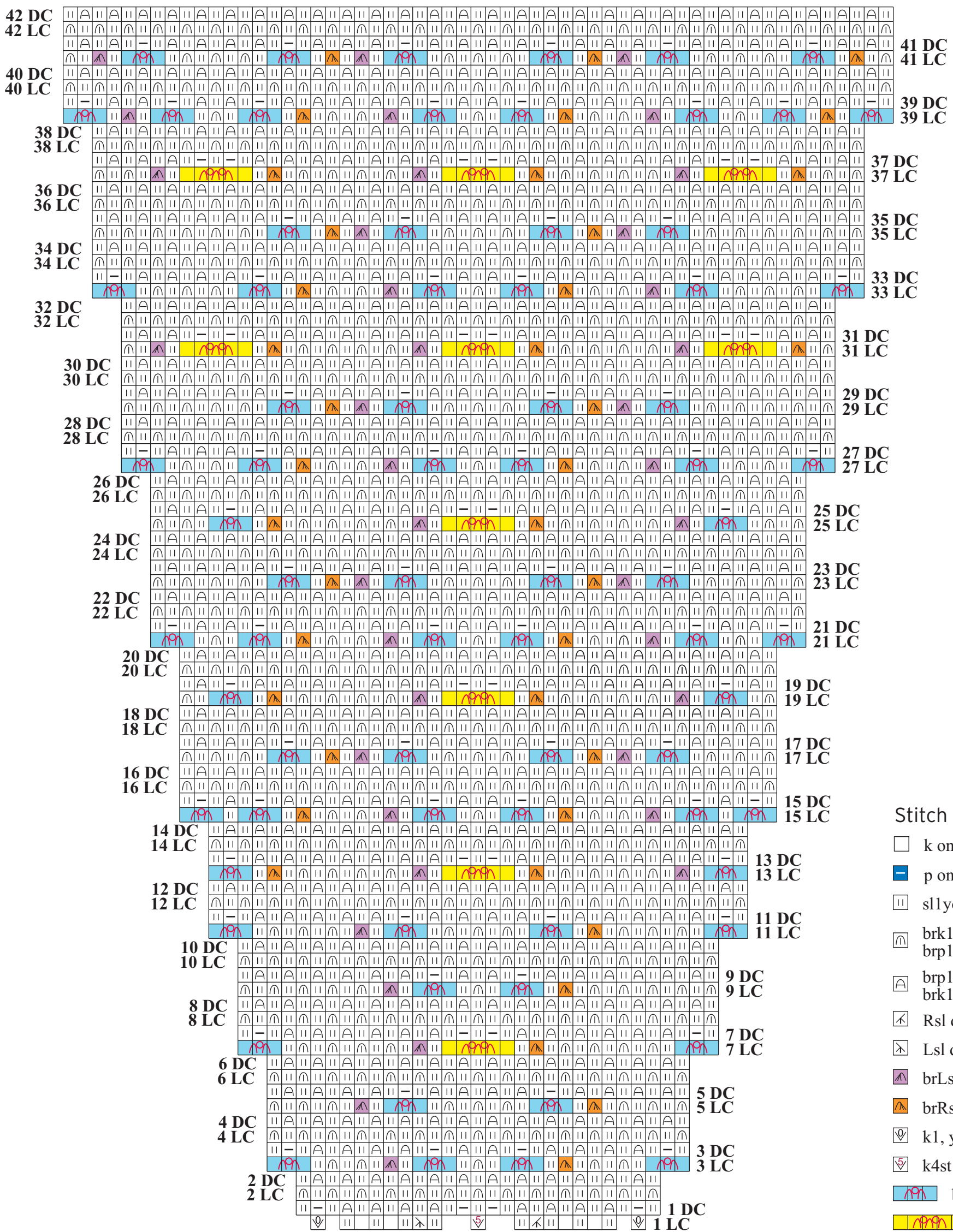


9 sts inc'd to 57 sts

Stitch Key

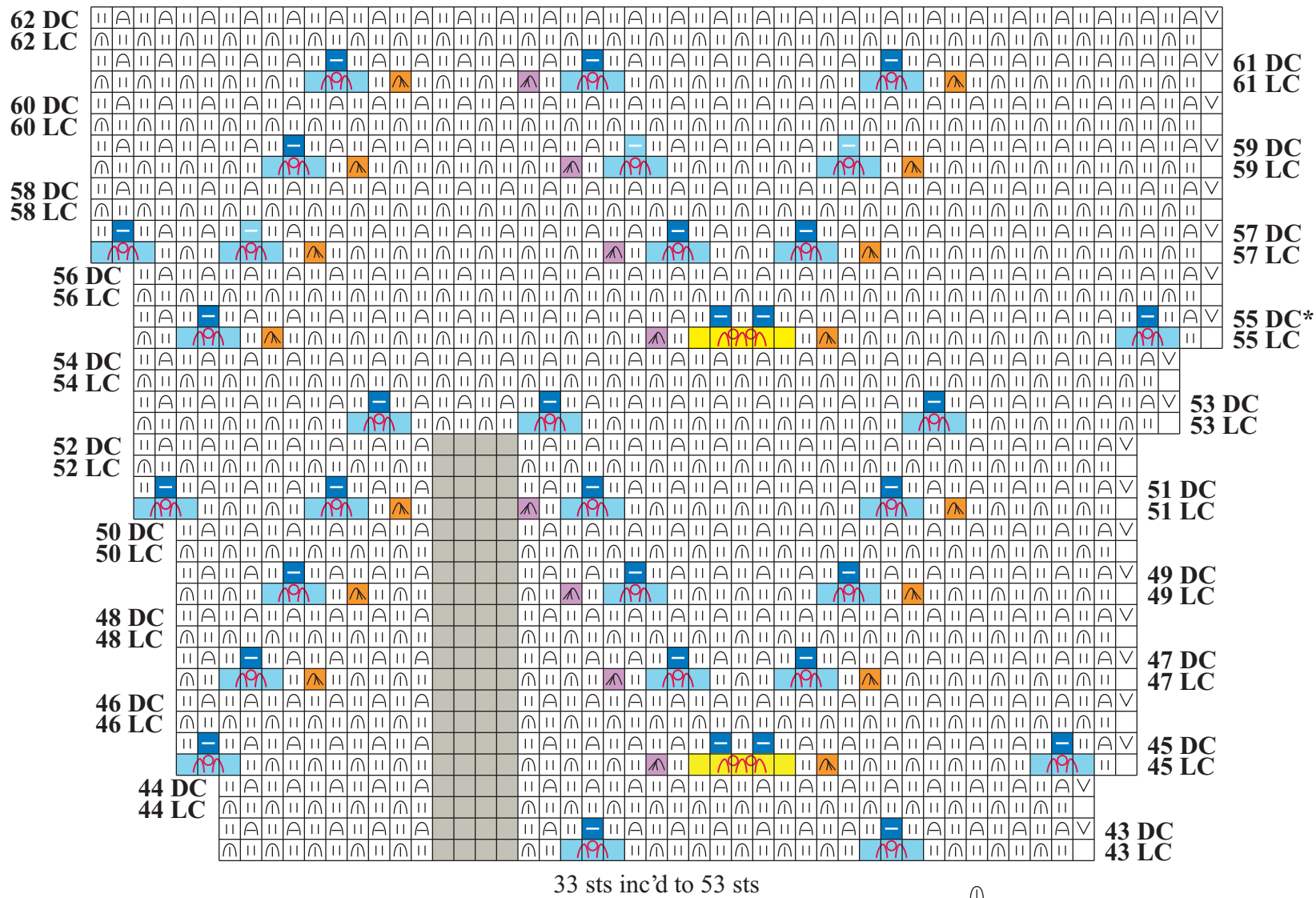
- k on RS, p on WS
- p on RS, k on WS
- sl1yo
- brk1 on RS, brp1 on WS
- brp1 on RS, brk1 on WS
- Rsl dec
- Lsl dec
- brLsl dec
- brRsl dec
- k1, yo, k1 in same st
- k4st inc
- brkyobrk
- br4st inc

CHART 3 - BACK



21 sts inc'd to 57 sts

CHART 5 - LEFT FRONT



Stitch Key

□ k on RS, p on WS

▬ p on RS, k on WS

▭ sl1yo

✓ slip 1

⌈ brk1 on RS,
brp1 on WS

⌋ brp1 on RS,
brk1 on WS

■ no stitch

⌋ Rsl dec

⌋ Lsl dec

⌋ brLsl dec

⌋ brRsl dec

⌋ k1, yo, k1 in same st

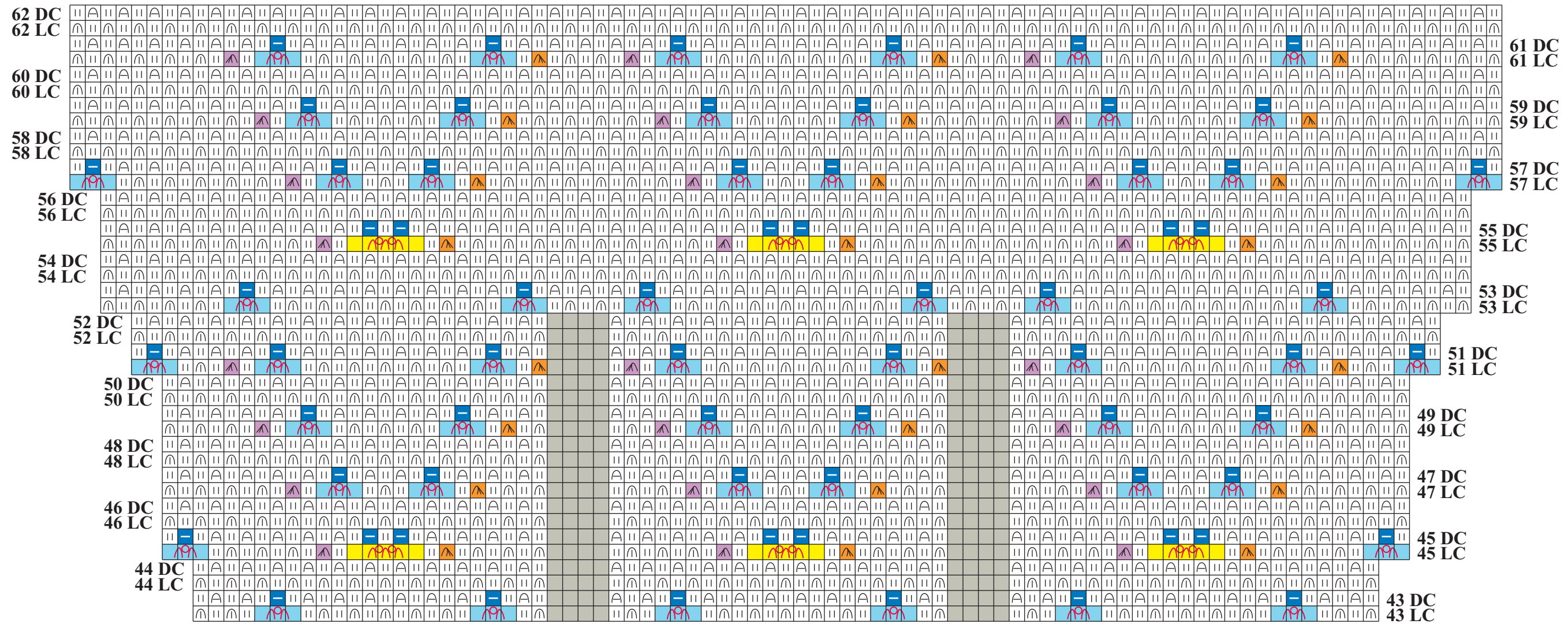
⌋ k4st inc

⌋ brkyobrk

⌋ br4st inc

*place marker for collar
shaping

CHART 6 - BACK



57 sts inc'd to 93 sts

Stitch Key

- | | | | |
|------------------|------------------------|-----------------------|-----------|
| k on RS, p on WS | brk1 on RS, brp1 on WS | brLsl dec | brkyobrk |
| p on RS, k on WS | brp1 on RS, brk1 on WS | brRsl dec | br4st inc |
| sl1yo | Rsl dec | k1, yo, k1 in same st | |
| no stitch | Lsl dec | k4st inc | |

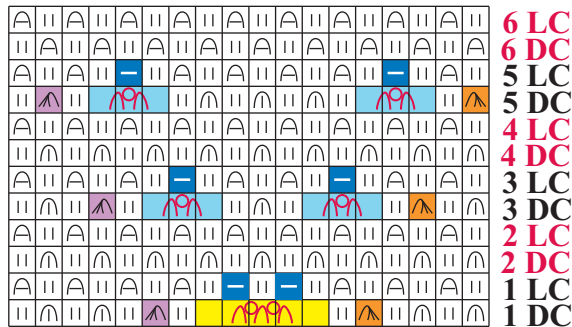
CHART 7 - RIGHT FRONT

62 DC
62 LC
61 DC
61 LC
60 DC
60 LC
59 DC
59 LC
58 DC
58 LC
57 DC
57 LC
56 DC
56 LC
55 DC*
55 LC
54 DC
54 LC
53 DC
53 LC
52 DC
52 LC
51 DC
51 LC
50 DC
50 LC
49 DC
49 LC
48 DC
48 LC
47 DC
47 LC
46 DC
46 LC
45 DC
45 LC
44 DC
44 LC
43 DC
43 LC

33 sts inc'd to 53 sts

- Stitch Key
- k on RS, p on WS
 - p on RS, k on WS
 - sl1yo
 - slip 1
 - brk1 on RS, brp1 on WS
 - brp1 on RS, brk1 on WS
 - no stitch
 - Rsl dec
 - Lsl dec
 - brLsl dec
 - brRsl dec
 - k1, yo, k1 in same st
 - k4st inc
 - brkyobrkr
 - br4st inc
- *place marker for collar shaping

CHART 9



18-sts

Stitch Key










-  k on RS, p on WS
-  p on RS, k on WS
-  sl1yo
-  brk1 on RS,
brp1 on WS
-  brp1 on RS,
brk1 on WS
-  brLsl dec
-  brRsl dec
-  brkyobrk
-  br4st inc

CHART 8

