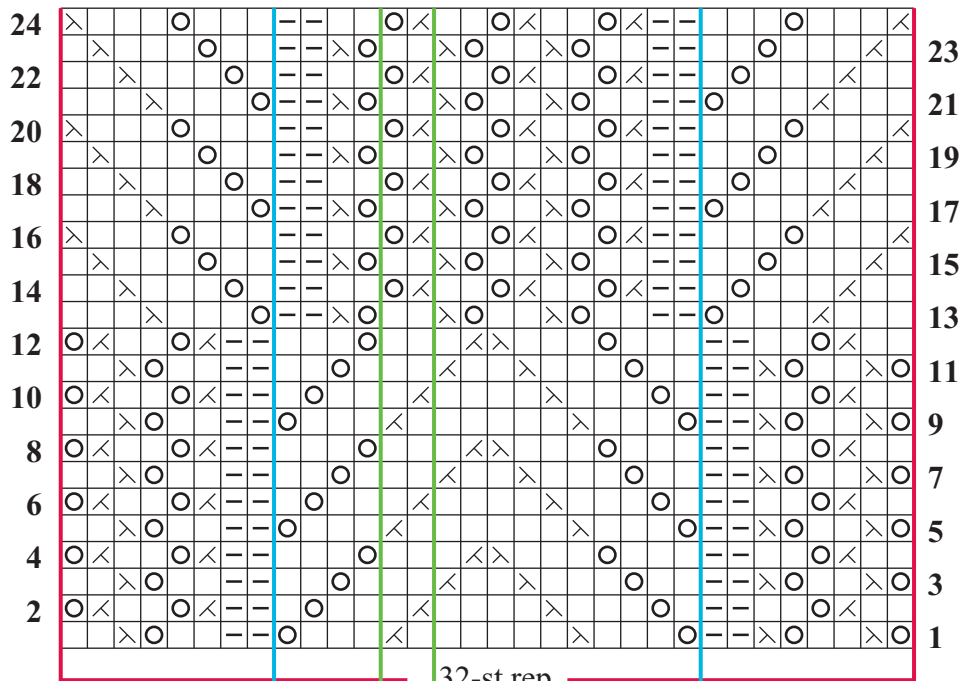


# 1 Lace Turtleneck

Designed by Yoko Hatta. Oversized lace pullover with deep turtleneck and sleeves picked up along armhole edge and worked to cuff. Sized for Small, Medium/Large and X-Large/XX-Large and shown in size Medium/Large on page 36.



Beg sleeve

32-st rep

Beg and end neck S and M/L

End sleeve

Beg and end neck XL/XXL

## Stitch Key

- k on RS, p on WS
- p on RS, k on WS
- k2tog on RS, p2tog on WS
- ssk on RS, ssp on WS
- yo