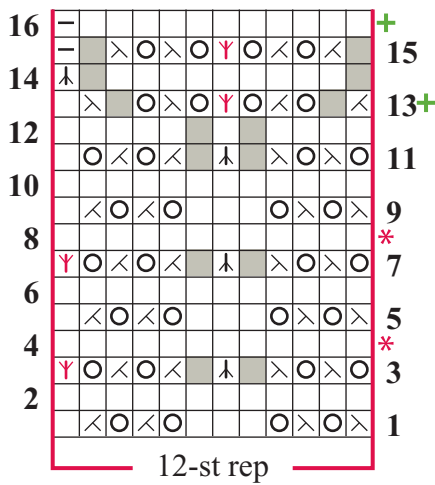


19 Lace Tank

Designed by Mari Tobita. Close-fitting tank worked in the round in all-over lace pattern. Sized for Small, Medium, Large, X-Large and XX-Large and shown in size Small on page 61.

CHART 1



Stitch Key

- k on RS, p on WS
- ◻ p on RS, k on WS
- yo
- no stitch
- ⌘ k3tog
- ⊞ SK2P
- ⊗ k2tog on RS, p2tog on WS
- ⊘ ssk on RS, p2tog tbl on WS
- ⊡ S2KP on RS, SP2P on WS
- ◡ bind off 1 st
- ⌞ lifted inc R
- ⌟ lifted inc L
- ⌘ M3

* Work to 1 st before marker, sl 1, rm, move slipped st back to LH needle, pm for new beg of rnd.

+ Work to end of rnd, rm, k1, pm for new beg of rnd.

CHART 2

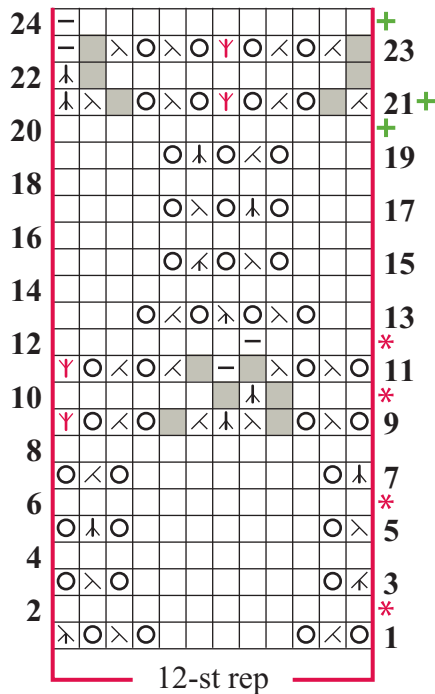


CHART 2A

