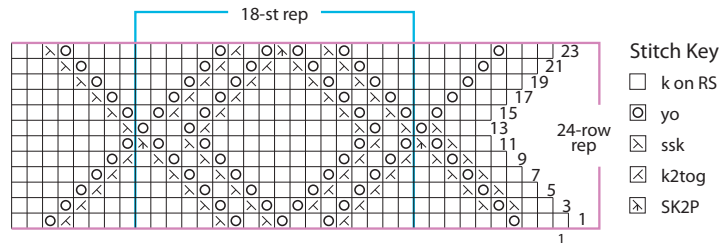


BUTTONED SKIRT #33

WINTER 2011/12

Photo on pg 76, instructions on pg 107.



- Stitch Key**
- k on RS
 - yo
 - ⊗ ssk
 - ⊗ k2tog
 - ⊗ SK2P

Note Work all RS (odd) rows from chart. Purl all WS (even) rows.