

15 LACE WRAP

by Deborah Newton
Instructions on pg 122

CHART 1 Wavy lace

(chart includes edge sts from text)

WRAP

Cast on 104 sts. Work Prep row of Chart 1 on RS as foll: Beg with first st and work to 11-st rep, work 11-st rep nine times, work to end of row. Cont to work rows 1-28 until piece measures 64"/163cm, end with row 5 or 19. Bind off loosely.

CHART 2 Lace border pattern

(chart includes edge sts from text)

BORDERS

With RS facing, pick up and k100 sts evenly along bound off edge.

Next row (WS) P2, k to last 2 sts, p2.

Next row K2, p1, k to last 3 sts, p1, k2.

Rep these 2 rows once more.

BEG CHART 2

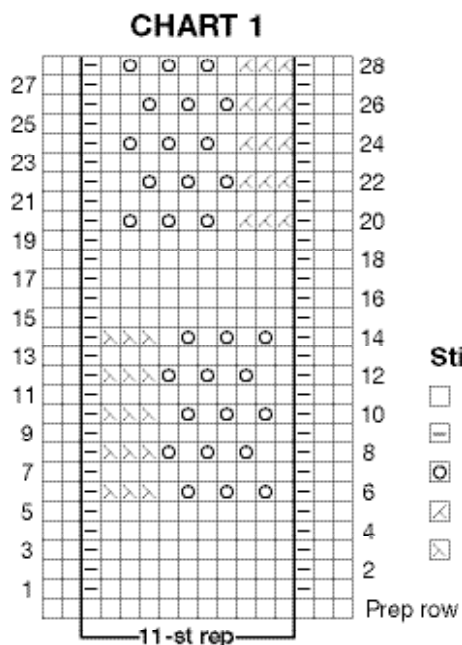
Work Row 1 of Chart 2 on WS as foll: Beg with first st and work to 10-st rep, work 10-st

rep eight times, work to end of row. Work until 27 rows of chart are complete.

Next row (RS) K2, p1, k to last 3 sts, p1, k2.

Next row (WS) P2, k to last 2 sts, p2.

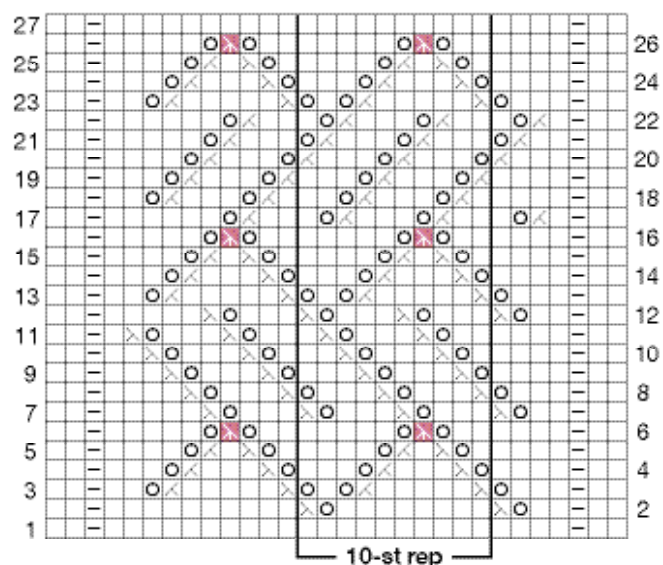
Rep these 2 rows once more. Bind off loosely. Rep border along cast-on edge.



Stitch Key

- K on RS, p on WS
- ▢ P on RS, k on WS
- Yo
- ⊗ K2tog
- ⊗ SSK

CHART 2



Stitch Key

- K on RS, p on WS
- ▢ P on RS, k on WS
- Yo
- ⊗ K2tog on RS, p2tog on WS
- ⊗ SSK on RS, p2tog tbl on WS
- ⊗ SK2P