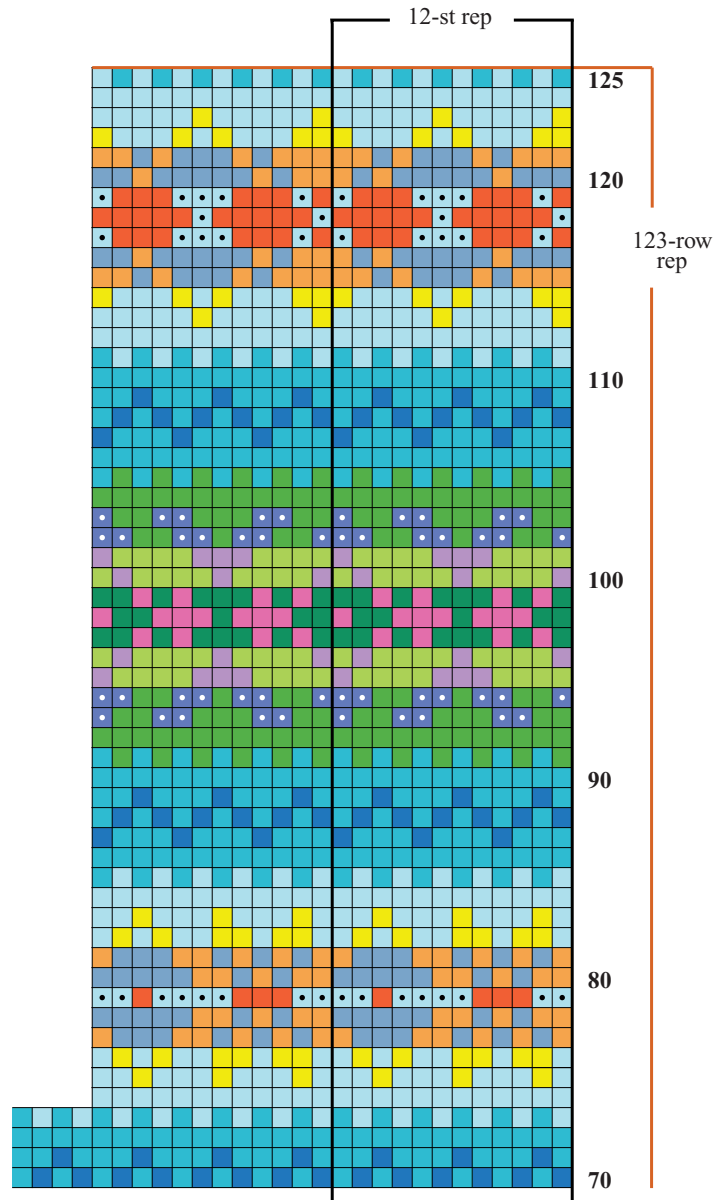


## 5 FAIRISLE TUNIC

In Fall 2010, standard-fitting cap sleeve A-line tunic in multiple Fair Isle band patterns. Sized for Small, Medium, Large, X-Large and shown in size Small on page 76.



# 5 FAIR ISLE TUNIC

In Fall 2010, standard-fitting cap sleeve A-line tunic in multiple Fair Isle band patterns. Sized for Small, Medium, Large, X-Large and shown in size Small on page 76.

**Note:** Page 2 of the chart overlaps Page 1 from rows 70-73.

### Color Key

- soft green (A)
- teal blue (B)
- navy (C)
- purple (D)
- plum (E)
- fuchsia (F)
- forest green (G)
- baby blue (H)
- pale yellow (I)
- light orange (J)
- dark orange (K)
- medium blue (L)
- dark blue (M)
- medium green (N)

