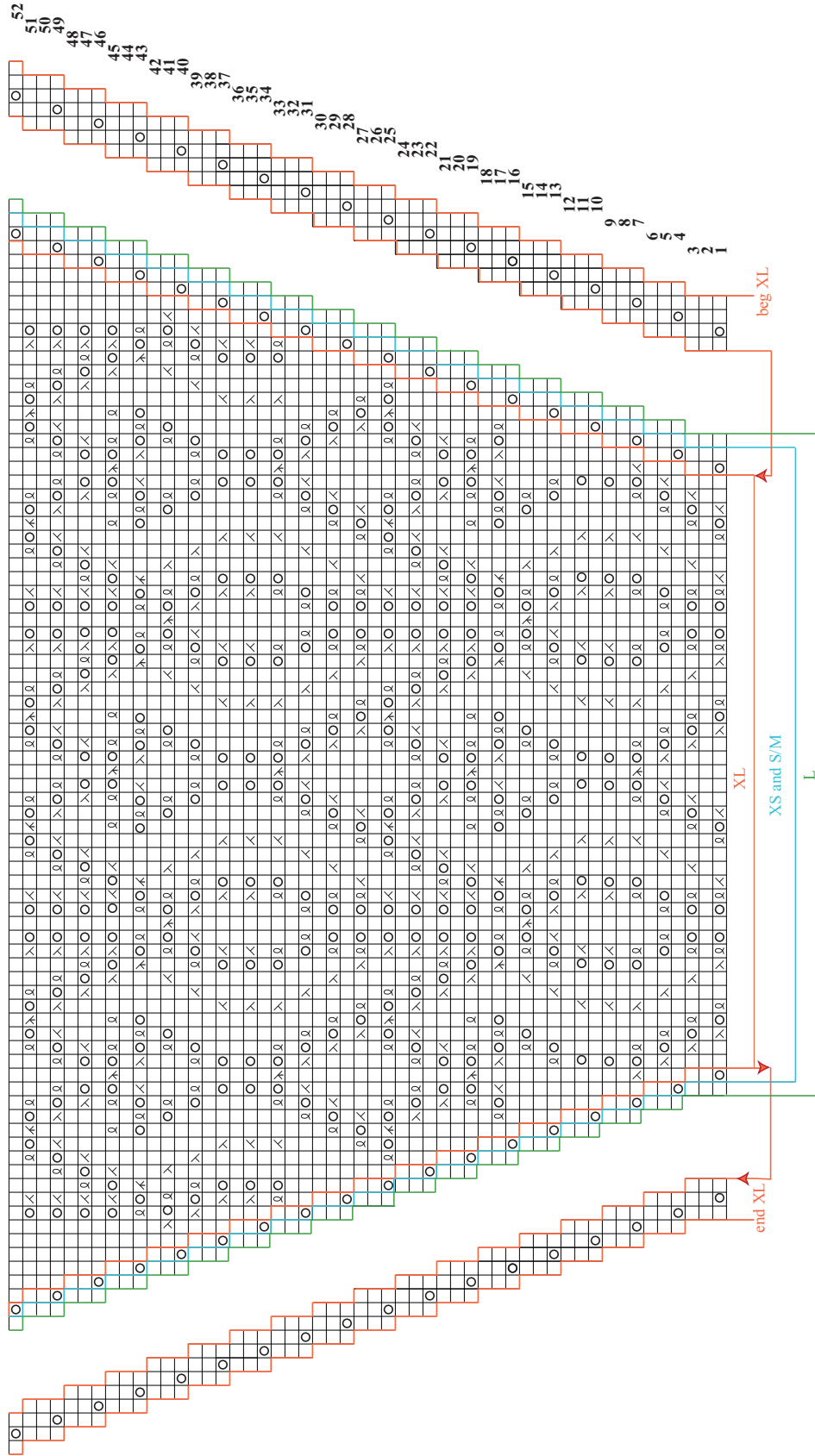


13 LACE JACKET

In Fall 2010, lace jacket knit in the round, with close fitting St st sleeves, lace edge and cuffs. Sized for X-Small, Small/Medium, Large, and X-Large, and shown in X-Small on pages 84 and 85.

CHART 2



- Stitch Key**
- k on RS, p on WS
 - p on RS, k on WS
 - yo
 - k1 tbl
 - ssk on RS, k2tog on WS
 - k2tog on RS,
 - k2tog tbl on WS
 - SK2P
 - k3tog
 - slip 1 wyrib