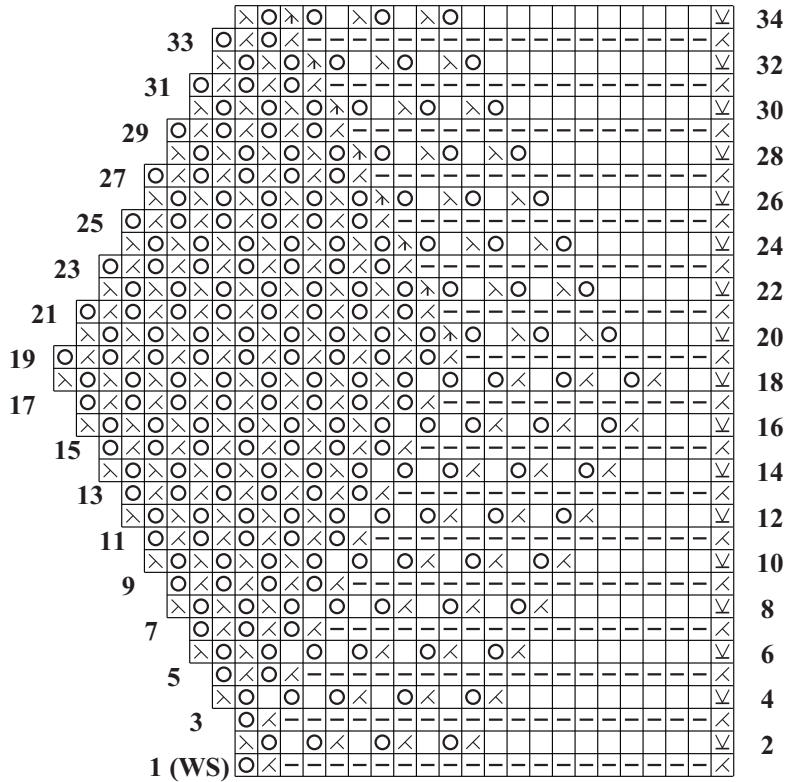


# 13 LACE JACKET

In Fall 2010, lace jacket knit in the round, with close fitting St st sleeves, lace edge and cuffs. Sized for X-Small, Small/Medium, Large, and X-Large, and shown in X-Small on pages 84 and 85.

## CHART 4



### Stitch Key

- |                          |                   |
|--------------------------|-------------------|
| □ k on RS, p on WS       | ⊗ k2tog on RS,    |
| ◻ p on RS, k on WS       | ⊗ k2tog tbl on WS |
| ⊙ yo                     | ⊗ SK2P            |
| ⊗ k1 tbl                 | ⊗ k3tog           |
| ⊗ ssk on RS, k2tog on WS | ⊗ slip 1 wyib     |