

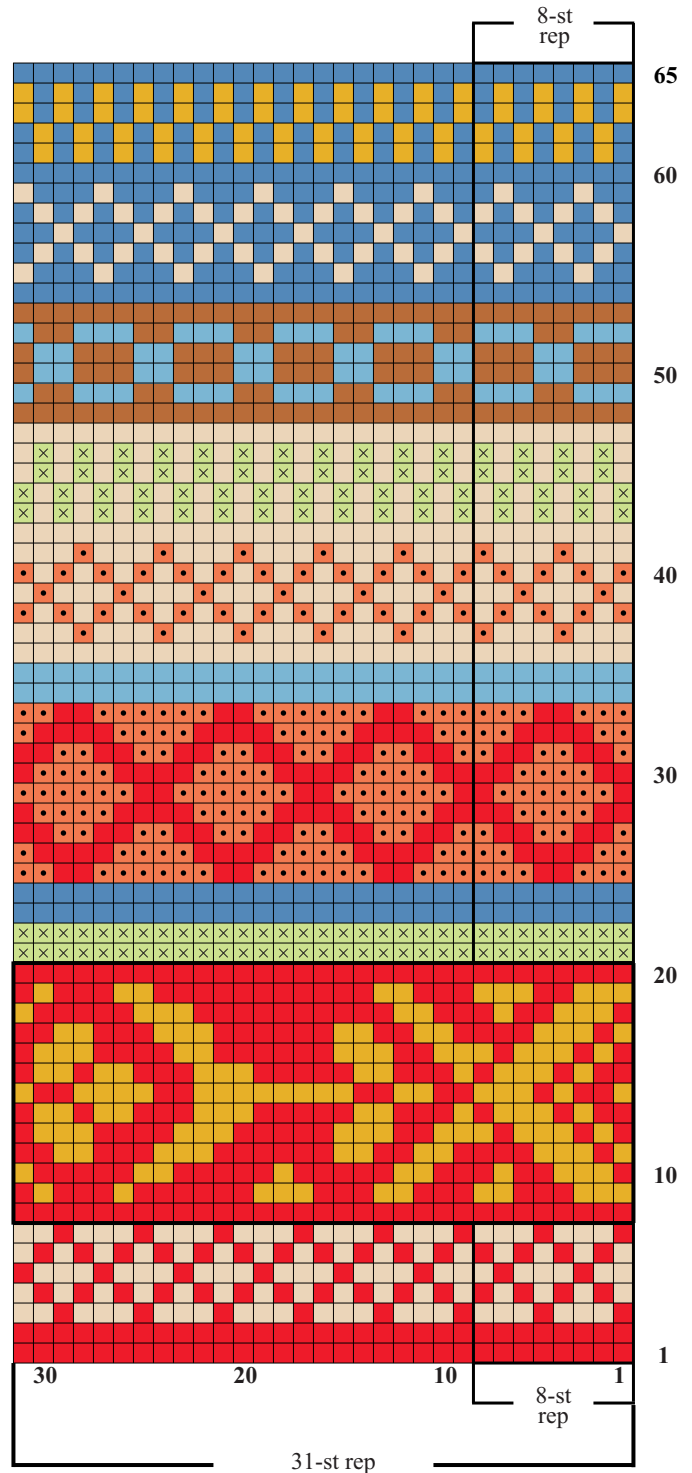
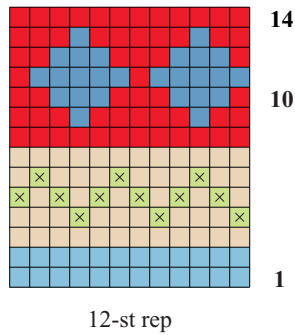
# 23 PATTERNED TUNIC

In Fall 2010, loose-fitting, color-patterned tunic with sloped shoulders, pompom trims and tie belt. Sized for Small/Medium, Large, X-Large and shown in size Small/Medium on page 96.

### Color Key

- cherry (A)
- putty (B)
- goldenrod (C)
- × jade (D)
- juniper (E)
- rust (F)
- calypso (G)
- topaz (H)

### COLLAR CHART



## 23 PATTERNED TUNIC

In Fall 2010, loose-fitting, color-patterned tunic with sloped shoulders, pompom trims and tie belt. Sized for Small/Medium, Large, X-Large and shown in size Small/Medium on page 96.

