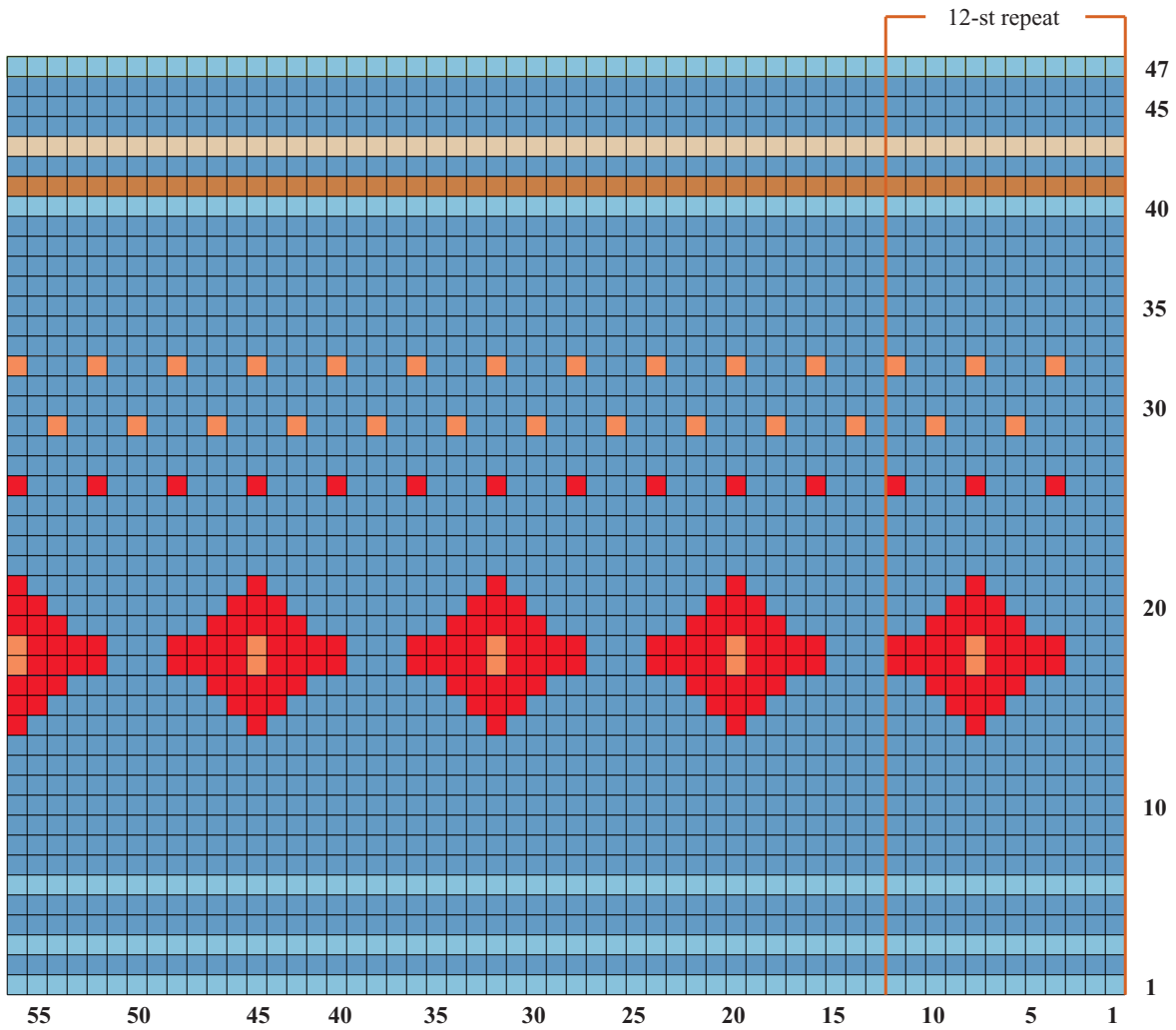


25 COLOR BAND CARDI

In Fall 2010, loose-fitting boxy cardigan in multiple southwest color band patterns. Sized for Small, Medium, Large, X-Large and shown in size Small on page 98.

CHART 3



Color Key

- navy (MC)
- green (A)
- brown (B)
- soft blue (C)
- tan (D)
- orange brown (E)
- red (F)
- rust (G)