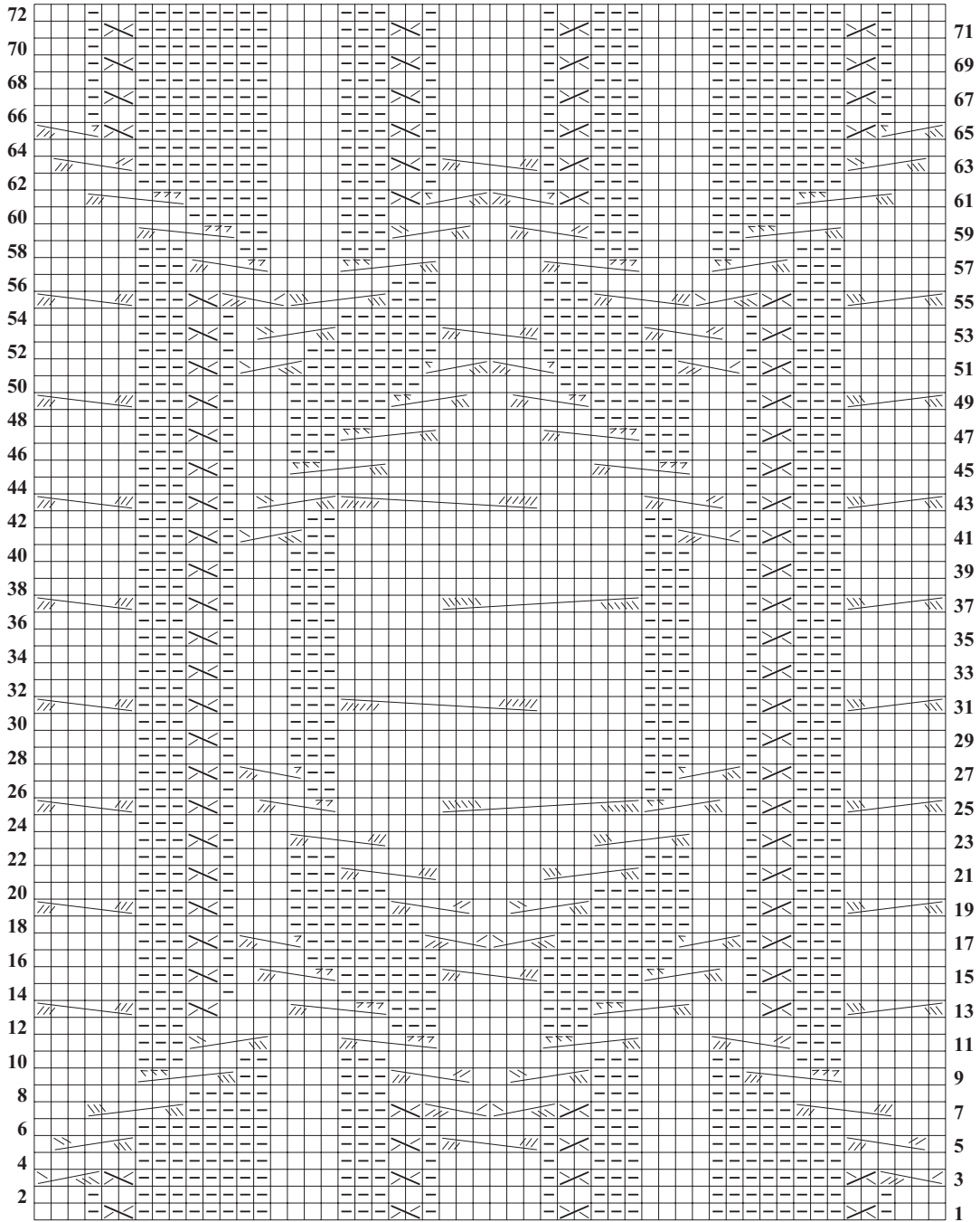


15. COWL NECK TOP

Loose-fitting short-sleeved top with front cable detail and ribbed cowl neck. Sized for Small, Medium, Large, 1X, 2X, shown in Small on page 88.

CHART 2



Stitch Key

- k on RS, p on WS
- p on RS, k on WS
- 2-st RT
- 2-st LT
- 4-st RC
- 4-st LC
- 4-st RPC
- 4-st LPC
- 5-st RC
- 5-st LC
- 5-st RPC
- 5-st LPC
- 6-st RC
- 6-st LC
- 6-st RPC
- 6-st LPC
- 12-st RC
- 12-st LC

54 sts