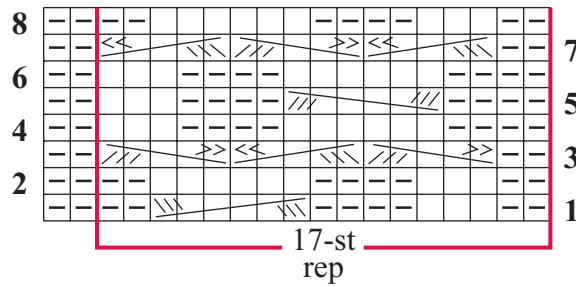


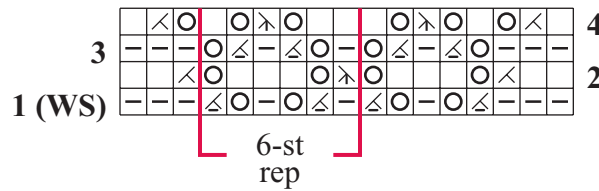
## 7. Soirée

Loose fit pullover is worked in blocks of color and texture patterns with puffed sleeves. Sized for Small/Medium, Large, 1X and 2X and shown in size Small/Medium on page 47.

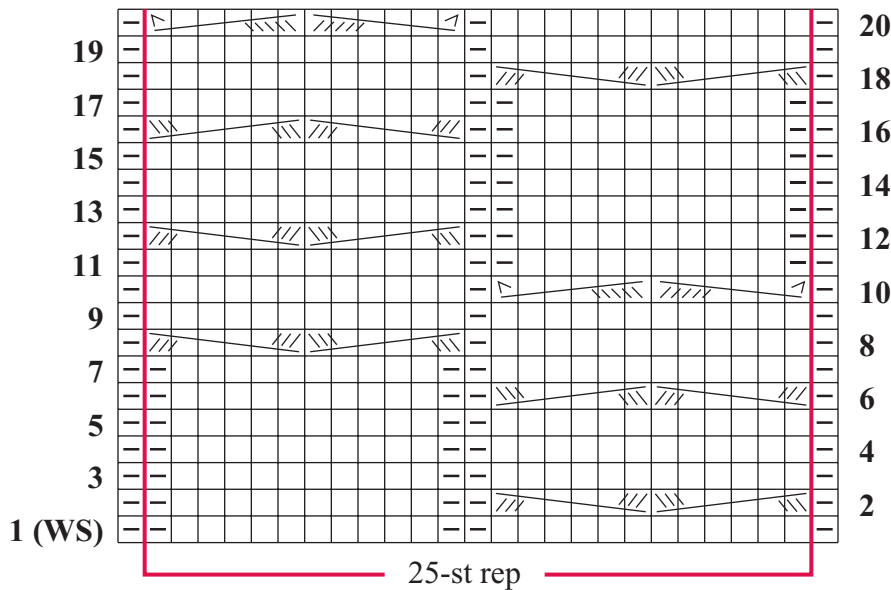
### TWISTED CABLE



### MESH PATTERN



### XO CABLE



### Stitch Key

- k on RS, p on WS
- p on RS, k on WS
- k2tog
- k2tog on WS
- SK2P
- yo
- 5-st RPC
- 5-st LPC
- 6-st RC
- 6-st LC
- 6-st RPC
- 6-st LPC