

30 ARAN WRAP CARDIGAN

Shown in *VK* Fall 2008 on page 107. Instructions begin on page 145.

UPPER BODY AND COLLAR

Beg pats

Note Charts beg on the WS with row 1.

Row 1 (WS) Work 32 sts of reversible rib cable chart, p1 tbl, work 9-st coin cable chart, 4 sts in ladder st, [p1, k1] three times, p1, 4 sts in ladder st, 22 sts in double braided cable chart, 4 sts in ladder st, [p1, k1] three times, p1, 4 sts in ladder st, 9 sts coin cable chart, p1 tbl, k1 (the end of this row is the lower edge of piece).

Row 2 (RS) P1, k1 tbl, work pat as established to last 33 sts, k1 tbl, work 32 sts of reversible rib cable chart. Cont in this way for 2 rows more.

Row 5 (WS) Work as established over 46 sts, work over the next 7 sts as foll: p2, inc 1 knit st, p1, [k1, p1] twice for 8 sts, work as established over next 30 sts, work over next

7 sts as foll: p1, [k1, p1] twice, inc 1 knit st, p2 for 8 sts, work as established over last 15–107 sts.

Row 6 (RS) Work as established over the first 15 sts, work row 2 of right zig zag cable over next 8 sts, then work as established over the next 30 sts, work row 2 of left zig zag cable over next 8 sts, work to end. Cont in pats as established until there are 83 (107) rows from beg and piece measures approx 15 (19.5)"/38 (49.5)cm from beg, ending with row 10 of double braided cable. Piece ends on row 11 of double braided cable chart.

RIGHT FRONT

Beg with WS row 1, work same as for the back until there are 82 (106) rows from the cast on, end with row 4 of double braided cable chart and row 24 of the zig zag charts.

Next (dec) row (WS) Work as established

to the left zig zag cable, p2tog, [k1, p1] 3 times, work as established to the right zig zag cable, [p1, k1] 3 times, p2tog, work to end-105 sts. Working k1, p1 rib instead of zig zag cables, continue in pats until row 10 of the double braided has been worked. Bind off.

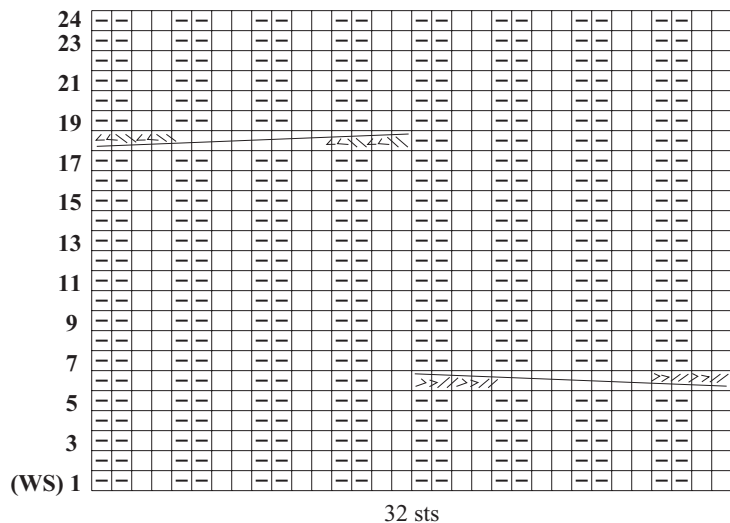
SLEEVES

Sleeve cap shaping

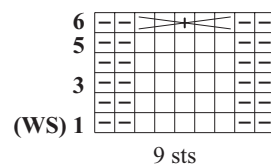
Sleeve cap is worked using short row shaping as foll:

Dec rnd 4 Work SK2P over the 3 sts at armhole edge. Then cont to dec 2 sts each side of the center twisted k st, every 6th row, first at cap edge then at armhole edge once more—54 sts. Work even until sleeve measures approx 19.5"/49.5cm measured at the underarm edge, and work pat row 11 of double braided cable. Bind off in pat.

REVERSIBLE RIB CABLE



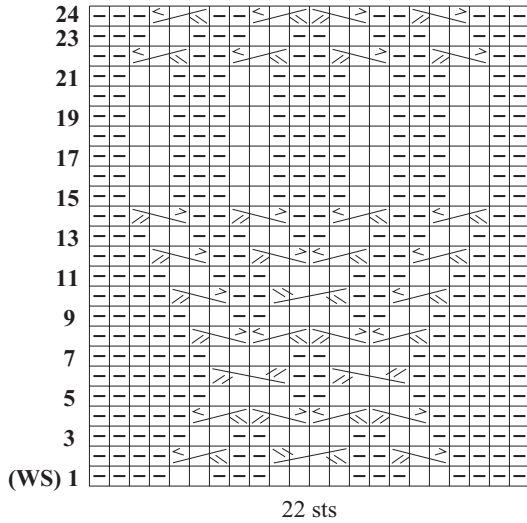
COIN CABLE



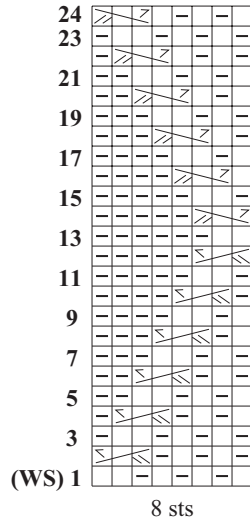
Stitch Key

- K on RS, p on WS
- P on RS, k on WS
- ⊠ 3-st RPC
- ⊠ 3-st LPC
- ⊠ 4-st RC
- ⊠ 4-st LC
- ⊠ 5-st CC
- ⊠ 16-st R rib C
- ⊠ 16-st L rib C

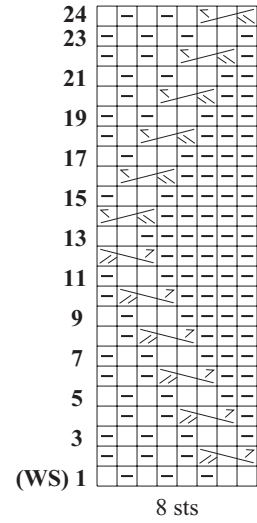
DOUBLE-BRAIDED CABLE







ZIG ZAG RIB LEFT



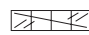
ZIG ZAG RIB RIGHT



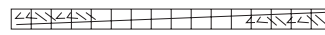
Stitch Key


-  K on RS, p on WS
-  P on RS, k on WS
-  3-st RPC
-  3-st LPC

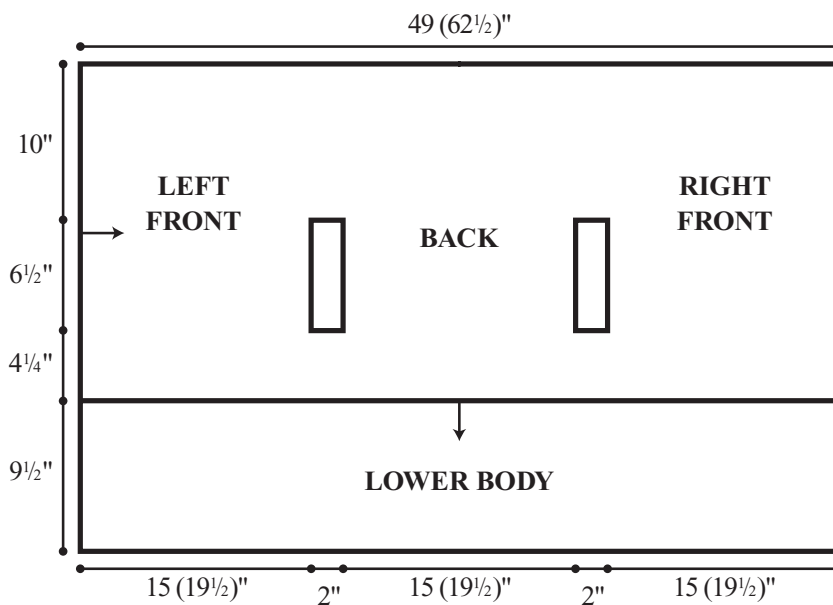
 4-st RC

 4-st LC

 5-st CC

 16-st R rib C

 16-st L rib C



↓ = Direction of work