

32 PRETZEL CABLE CARDI

Shown in *VK* Fall 2008 on page 109. Instructions begin on page 147.

The following definitions were omitted.

GLOSSARY ADDITIONS

- 4-st RC Sl 2 sts to cn and hold to back, k2, k2 from cn.
- 4-st LC Sl 2 sts to cn and hold to front, k2, k2 from cn.
- 4-st RPC Sl 2 sts to cn and hold to back, k2, p2 from cn.
- 4-st LPC Sl 2 sts to cn and hold to front, p2, k2 from cn.

CORRECTIONS

BACK

Cast on. . . **Next (dec) row (RS)** K1, ssk, work to last 3 sts, k2tog, k1. Work dec row every 18th (18th, 18th, 22nd, 22nd, 22nd) row 3 times—73 (81, 89, 99, 107, 115) sts. . .

Shoulder shaping

Bind off 6 (6, 7, 7, 8, 8) sts at the beg of next 4 rows, then 7 (8, 8, 9, 8, 9) sts at beg of next 2 rows. **Bind off rem 25 (25, 25, 27, 29, 29) sts.**

LEFT FRONT

Cast on 77 (85, 93, 103, 111, 119) sts.

Set-up row (WS) Beg with row 2 of chart 1, work first 27 sts, place marker (pm), work 28th st, work 49 (57, 65, 75, 83, 91) sts in k1, p1 rib (beg with row 2).

RIGHT FRONT

Cast on 77 (85, 93, 103, 111, 119) sts.

Set-up row (WS) Work 49 (57, 65, 75, 83, 91) sts in k1, p1 rib (beg with row 2), beg with row 2 of chart 2, work 1 st, pm, work rem 27 sts.

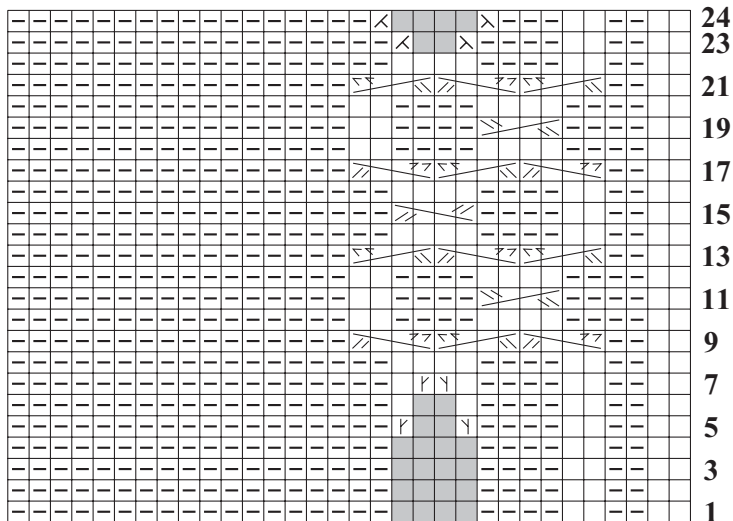
SLEEVE

Cuffs

Using open cast-on technique, cast on 33 sts.

Next row (RS) K1, work row 1 of chart 1 across the next

CHART 1



28 sts, p4. **Next row** K4, work row 2 of chart 1 across to last st, p1.

For x-small and small sizes only

Rep last 2 rows once more, then working as established, rep chart rows 1–24 twice, then work rows 1 and 2 three times more. Place sts on holder.

For medium and large sizes only

Working as established, rep chart rows 1–24 three times. Place sts on holder.

For x-large and xx-large sizes only

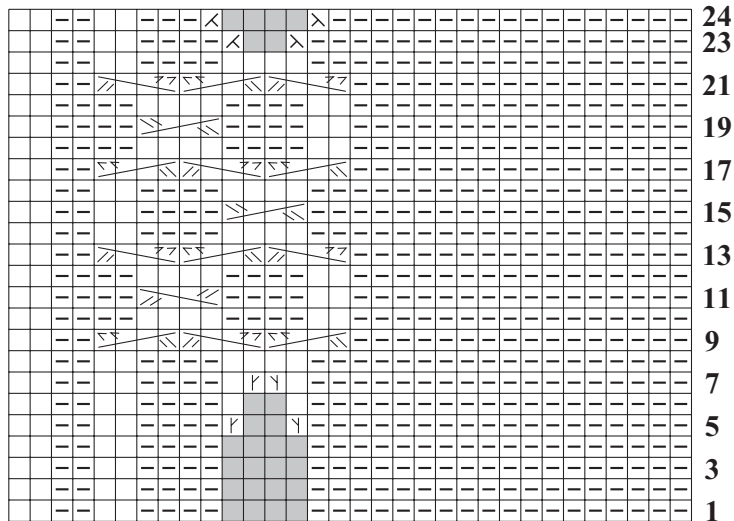
Rep last 2 rows once more, then working as established, rep chart rows 1–24 three times, then work rows 1 and 2 three times more. Place sts on holder.

Cap shaping

Bind off 3 (4, 5, 6, 7, 8) sts at the beg of the next 2 rows.

Dec 1 st each side every row 13 (14, 15, 16, 17, 18) times. Bind off 2 sts at the beg of the next 6 rows. Bind off rem 13 sts.

CHART 2



Stitch Key

- | | |
|--------------------|------------|
| ☐ K on RS, p on WS | ⌈ M1R |
| ☐ P on RS, k on WS | ⌋ M1L |
| ⊗ K2tog | ⊗ 4-st RC |
| ⊗ Ssk | ⊗ 4-st LC |
| ■ No stitch | ⊗ 4-st RPC |
| | ⊗ 4-st LPC |

↑
PM

↑
PM