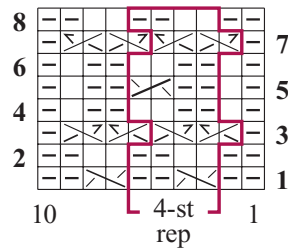


13 BUCKLE TRIM PULLOVER

Loose-fitting pullover in multiple stitch patterns with stand-up neck and buckle trim. Shown in Winter 2008/09 on page 65. Instructions begin on page 93.

CHART C



Stitch Key

- k on RS, p on WS
- p on RS, k on WS
- RT
- LT
- 2-st RPC
- 2-st LPC