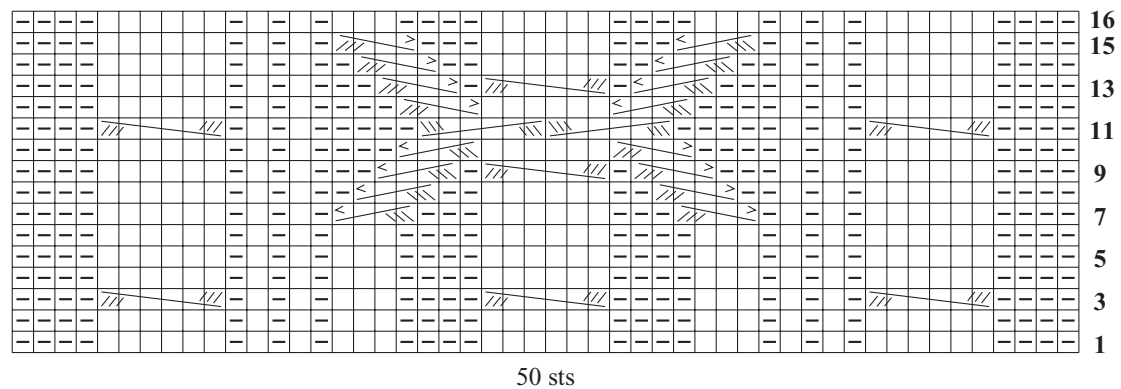


# 16 CABLED TUNIC

Shown in Winter 2008/2009 in size Small on page 68 and 69. Instructions begin on page 97.



50 sts

## Stitch Key

□ k on RS, p on WS

 4-st LPC on RS, 4-st RPC on WS

 6-st LC

▢ p on RS, k on WS

 4-st RPC on RS, 4-st LPC on WS

 6-st RC