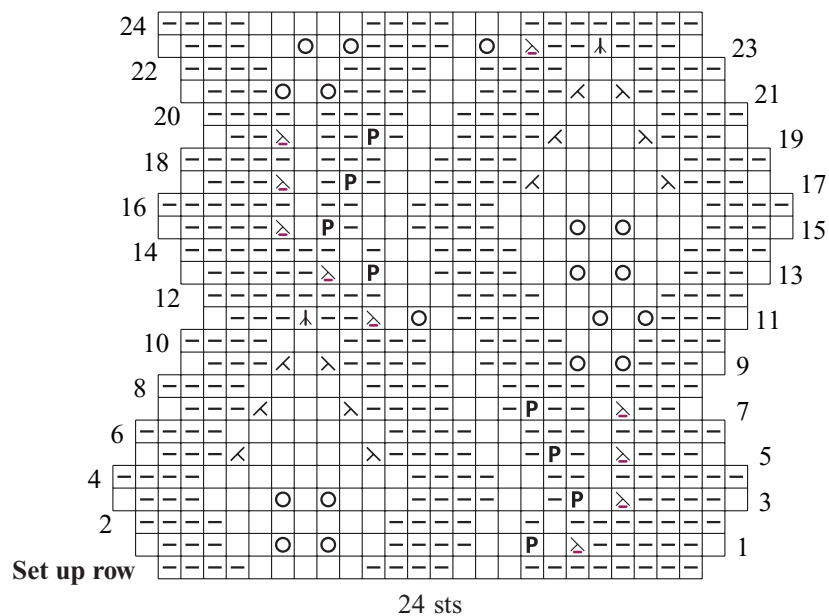


1 LACE SCARF

Chunky scarf in a leaf lace pattern, worked with two strands of bulky yarn held together. Shown in Winter 2008/09 on page 52. Instructions on page 80.



Stitch Key

□	k on RS, p on WS	⊗	k2tog	⊘	p2tog
▬	p on RS, k on WS	⊗	ssk	⊕	S2KP
○	yo	ⓐ	m1 p-st		

M1 p-st

Insert the LH needle from back to front under the horizontal strand between the st just worked and the next st on LH needle, then with RH needle purl the strand through the front loop.

S2KP slip 2 sts tog to RH needle, k1, pass 2 slipped stitches over the knit st.