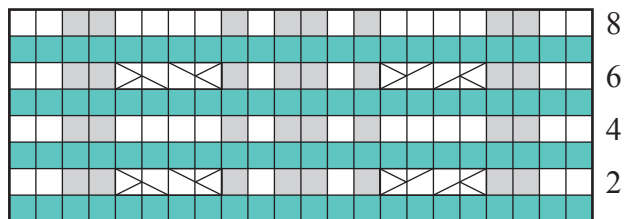


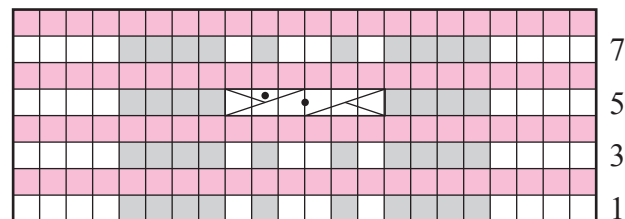
CABLE CHARTS

SIZE SMALL – B SIDE CHART



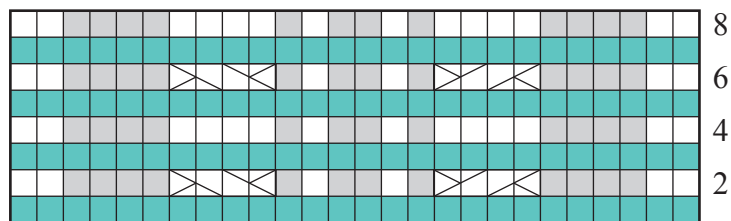
22-st panel

SIZE SMALL – A SIDE CHART



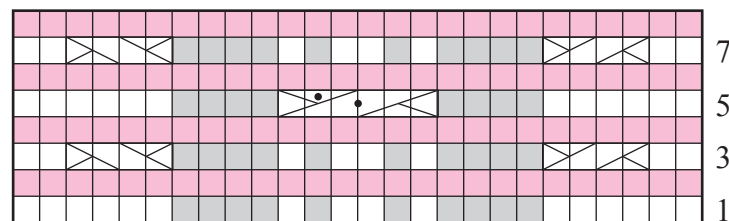
22-st panel

SIZE MEDIUM – B SIDE CHART



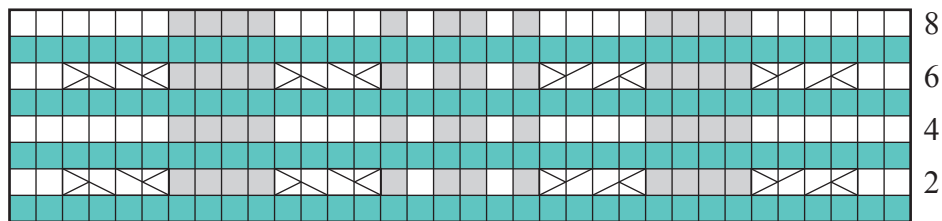
26-st panel

SIZE MEDIUM – A SIDE CHART



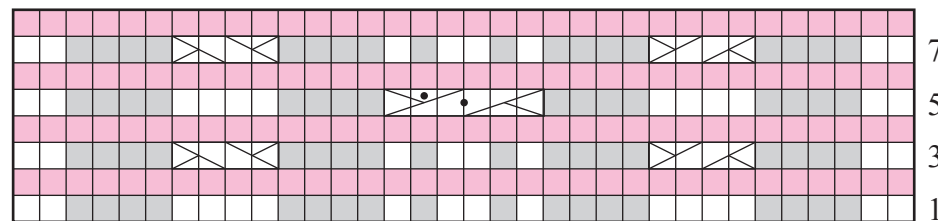
26-st panel

SIZE LARGE – B SIDE CHART



34-st panel

SIZE LARGE – A SIDE CHART



34-st panel

Stitch Key




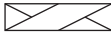

	knit		2/2 LC
	purl		2/2 RC
			3/3 RRC

Chart Notes

- 1 Work all rows from right to left, beg with A side chart and alternating 1 row from A side chart followed by 1 row from B side chart; a pink or green row indicates that the row must be worked from the other chart.
- 2 Work the sts as they appear in the chart. For instance, for every purl symbol, work the st as a purl st, no matter which side of the work you are on.