

BACK CABLE



Chart Notes

1 Charts beg with a WS row.

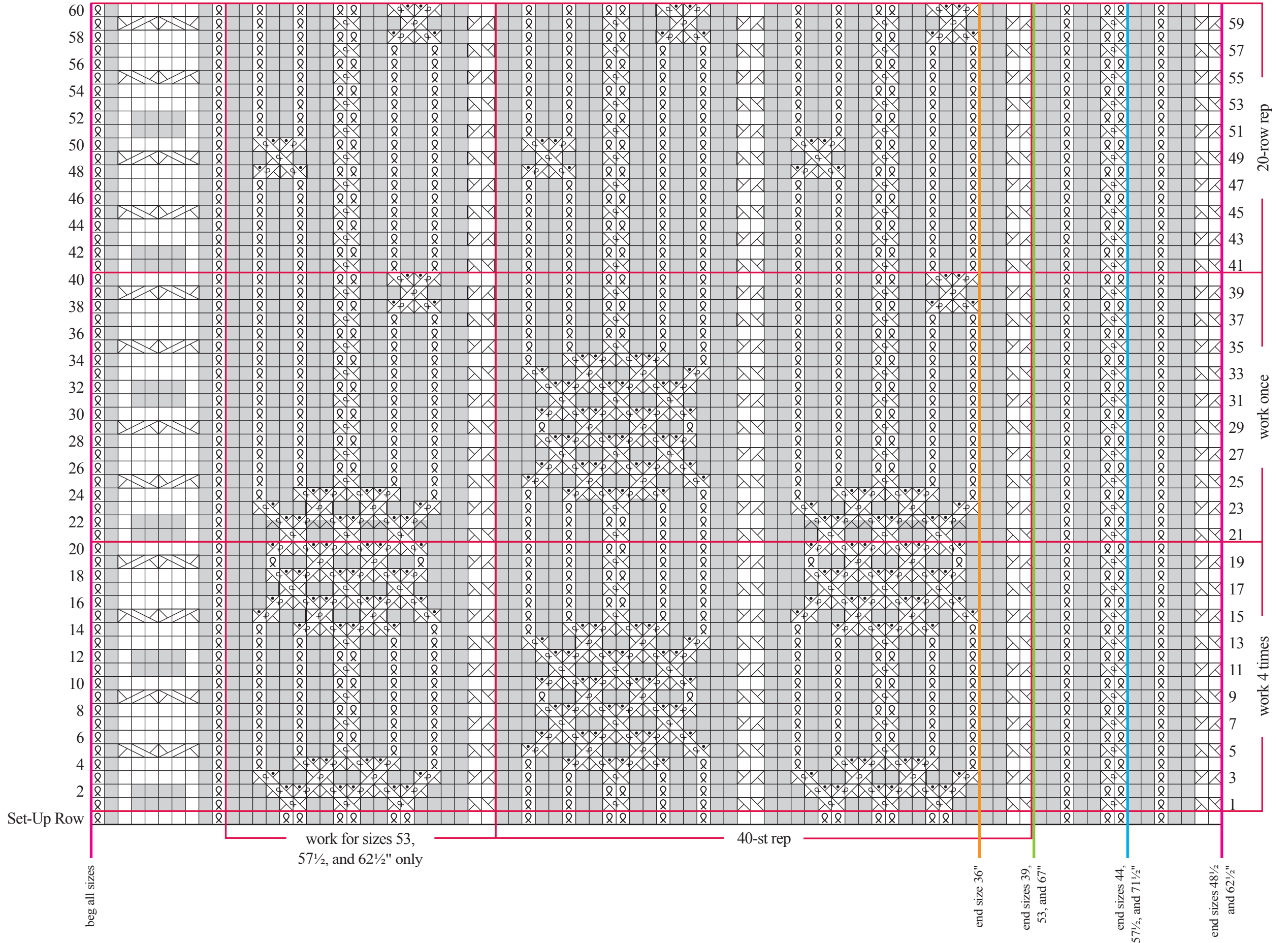
2 For Cable A, work Set-Up Row once, work Rows 1–20 a total of four times, work Rows 21–40 once, then work Rows 41–60 for remainder of piece.

3 For size 36" back, beg WS rows where indicated, work to end of 40-st rep, then return to beg of 40-st rep and work it one full time before working to end where indicated.

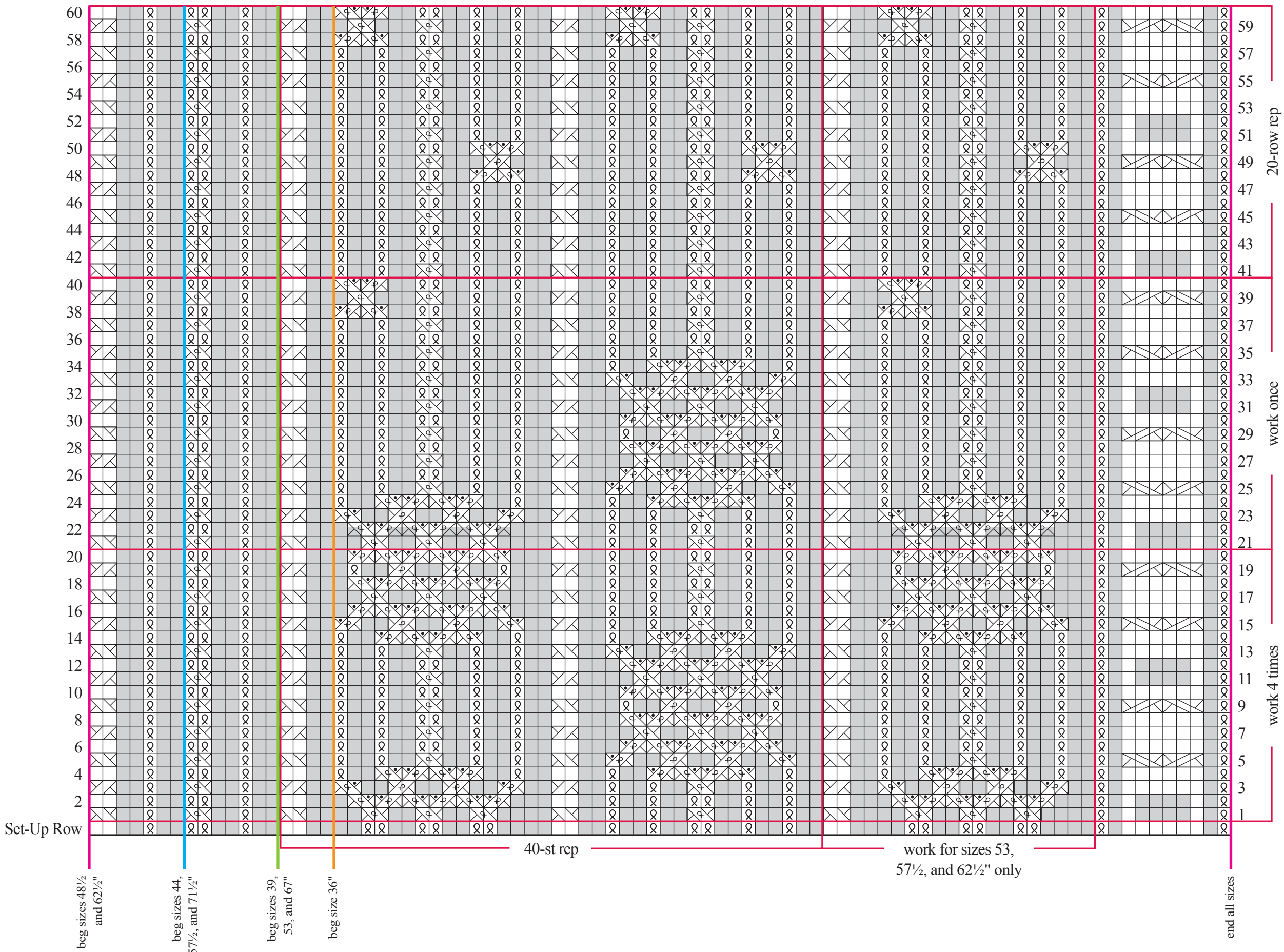
Stitch Key

k on RS, p on WS	p on RS, k on WS	1/1 LC	1/1 RC	1/1 LPT	1/1 RPT
k1 tbl on RS, p1 tbl on WS	sl 1 purlwise with yarn to WS	1/1 LKT	1/1 RKT	1/2 LC	1/2 RC

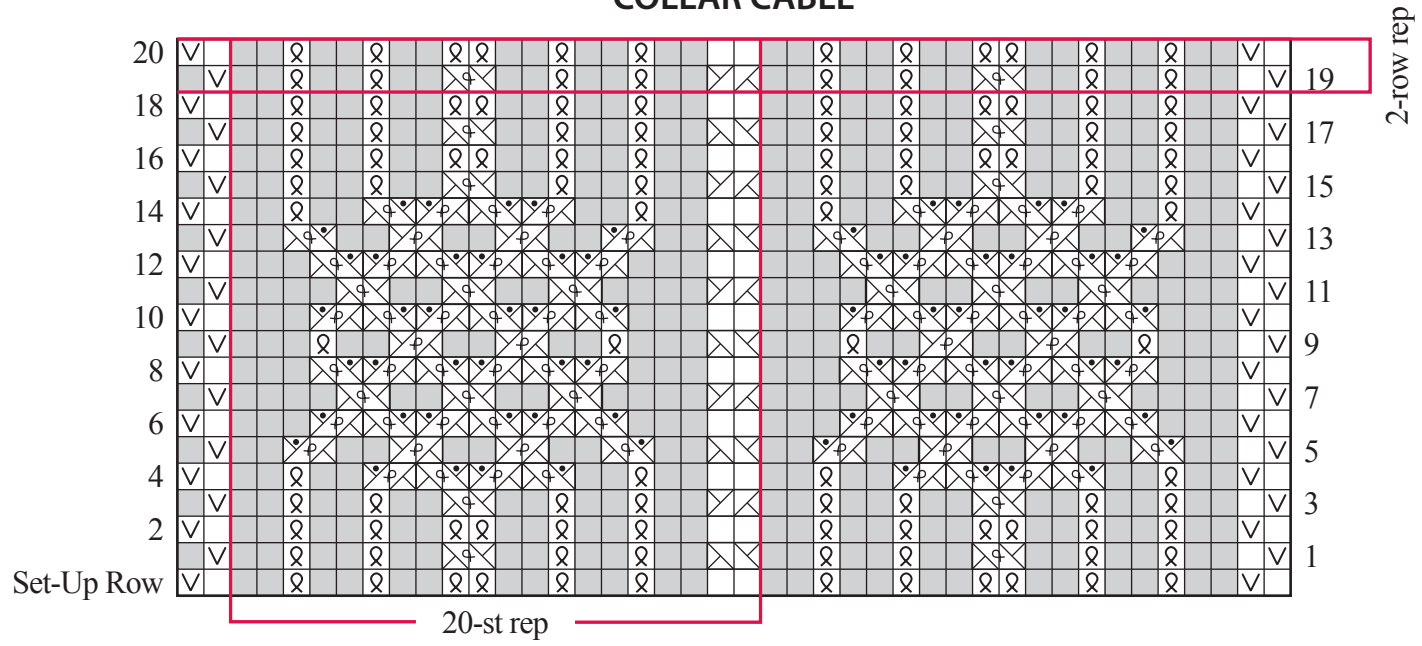
LEFT FRONT CABLE



RIGHT FRONT CABLE



COLLAR CABLE



SLEEVE CABLE

