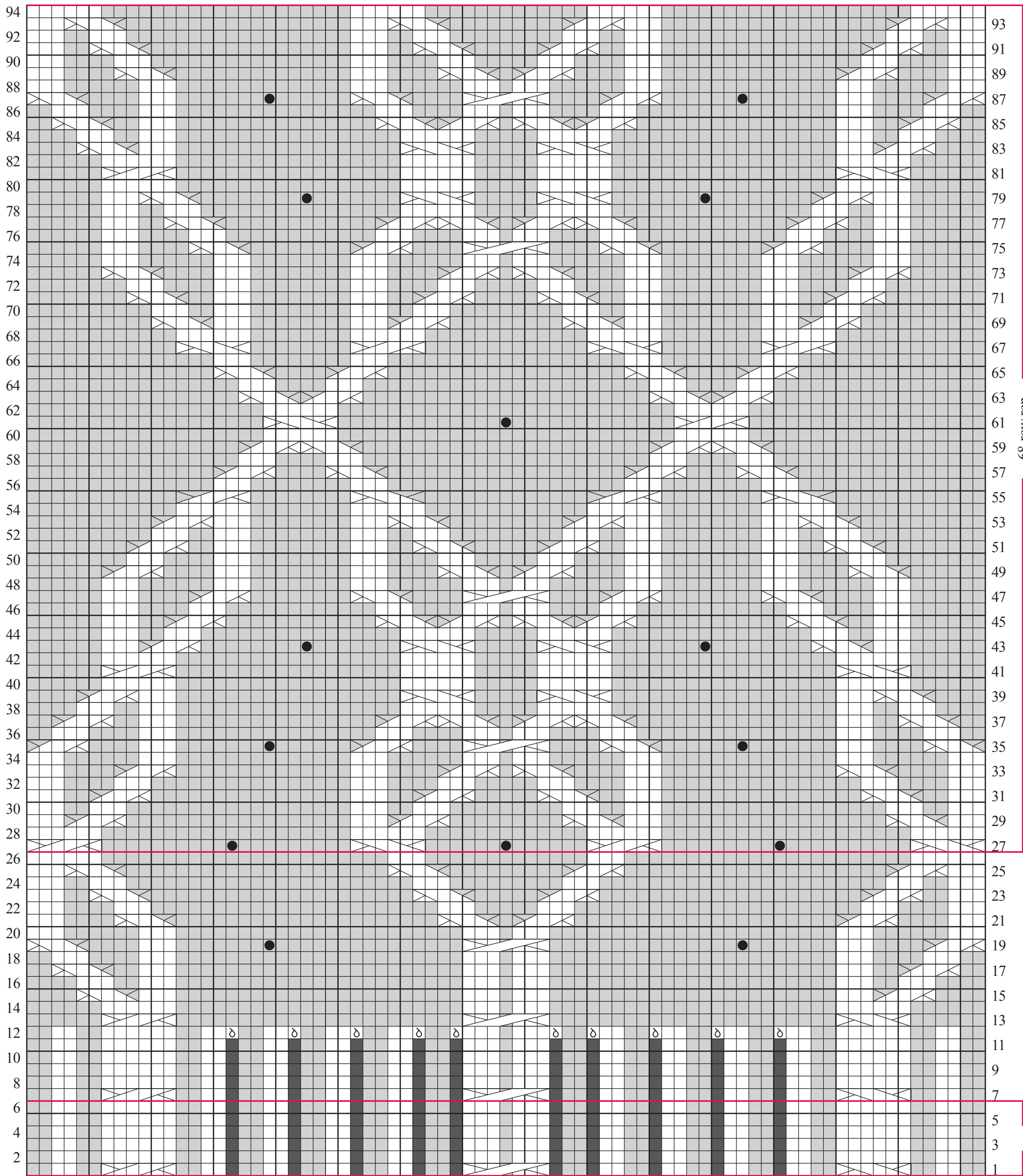


BODY CABLE



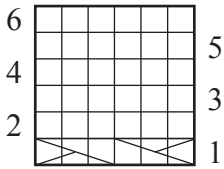
68-row rep

work 2 (2, 2, 2, 3)
(3, 3, 3, 3) times

67-st panel; inc to 77-st panel

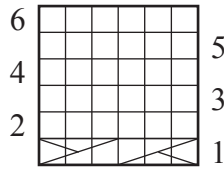
- Stitch Key**
- k on RS, p on WS
 - p on RS, k on WS
 - MB
 - no stitch
 - M1L
 - 3/2 LPC
 - 3/2 RPC
 - 3/3 LC
 - 3/3 RC
 - 3/3 LPC
 - 3/3 RPC
 - 3/1/3 RPC

LEFT CABLE



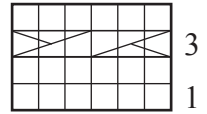
6-st panel

RIGHT CABLE



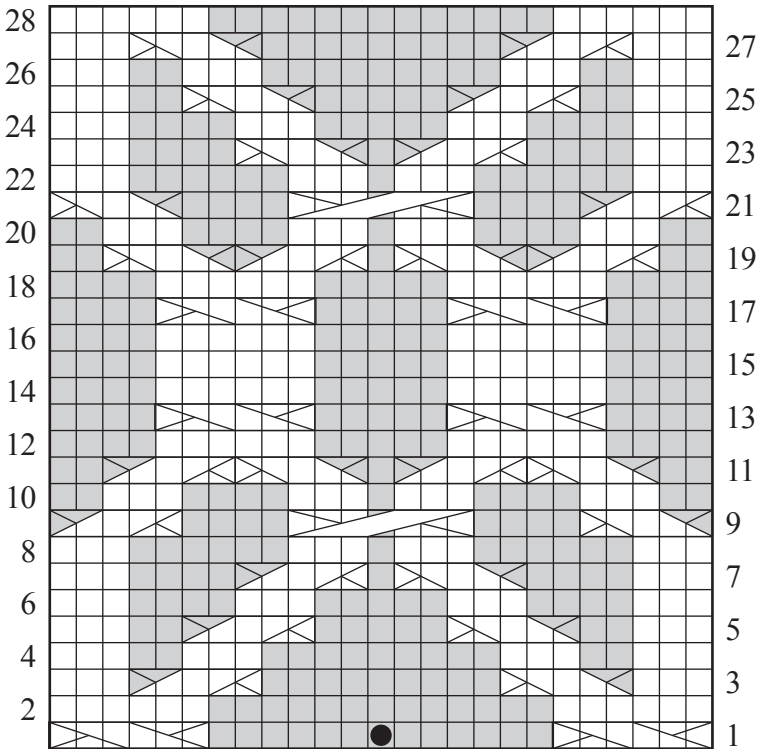
6-st panel

NECK CABLE



6-st panel

SLEEVE CABLE



25-st panel