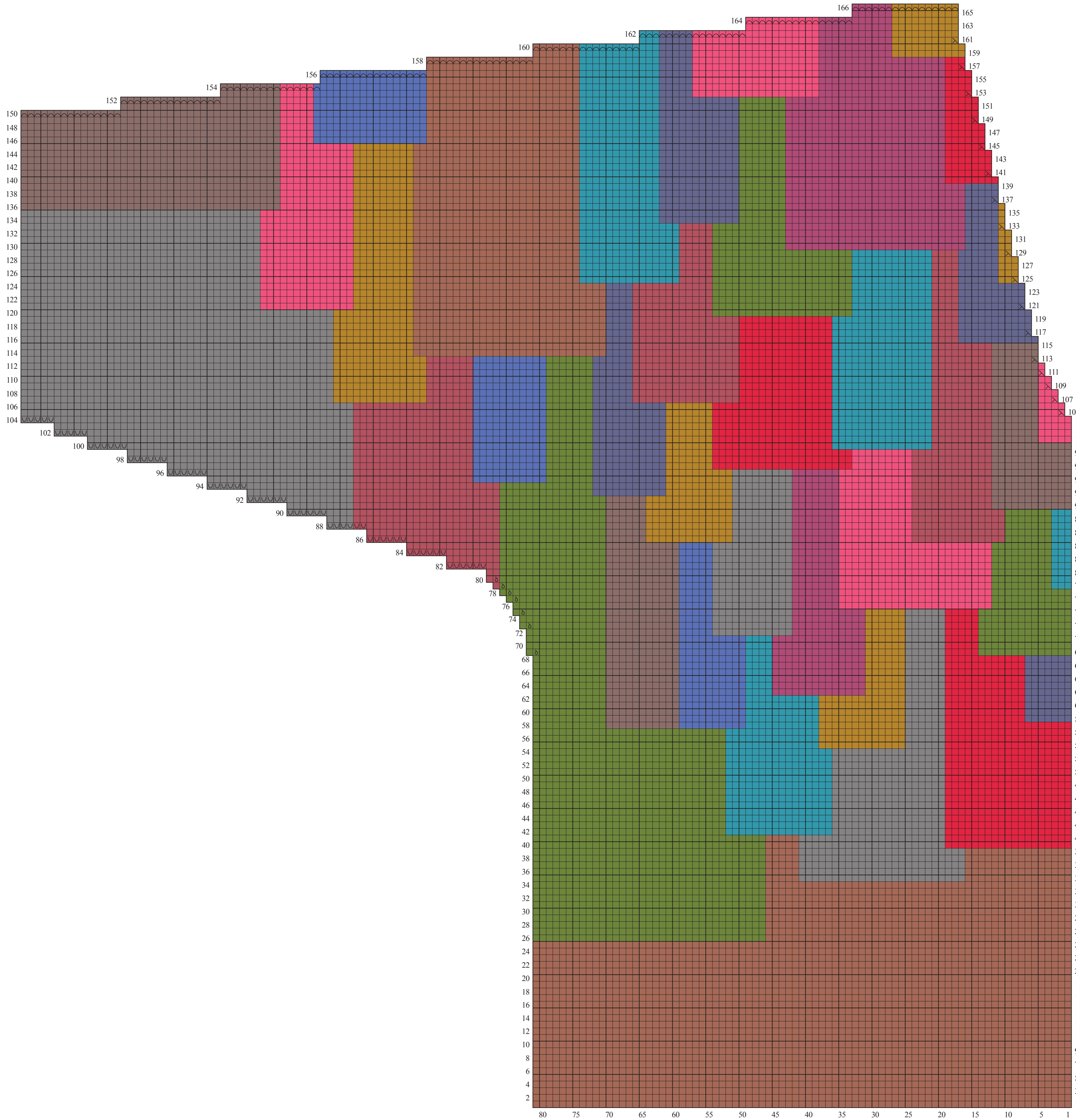


RIGHT FRONT/SLEEVE CHART – SIZE 64½"/164CM



- Stitch Key**
- k on RS, p on WS
 - p on RS, k on WS
 - ⊠ bind off
 - ⊠ k2tog on RS, p2tog on WS
 - ⊠ ssk on RS, ssp on WS
- Color Key**
- rage (A)
 - watery (B)
 - phantom (C)
 - seafarer (D)
 - ancient (E)
 - tawny (F)
 - barn red (G)
 - lotus leaf (H)
 - ultramarine (I)
 - french mustard (J)
 - scarlet (K)
 - chestnut (L)