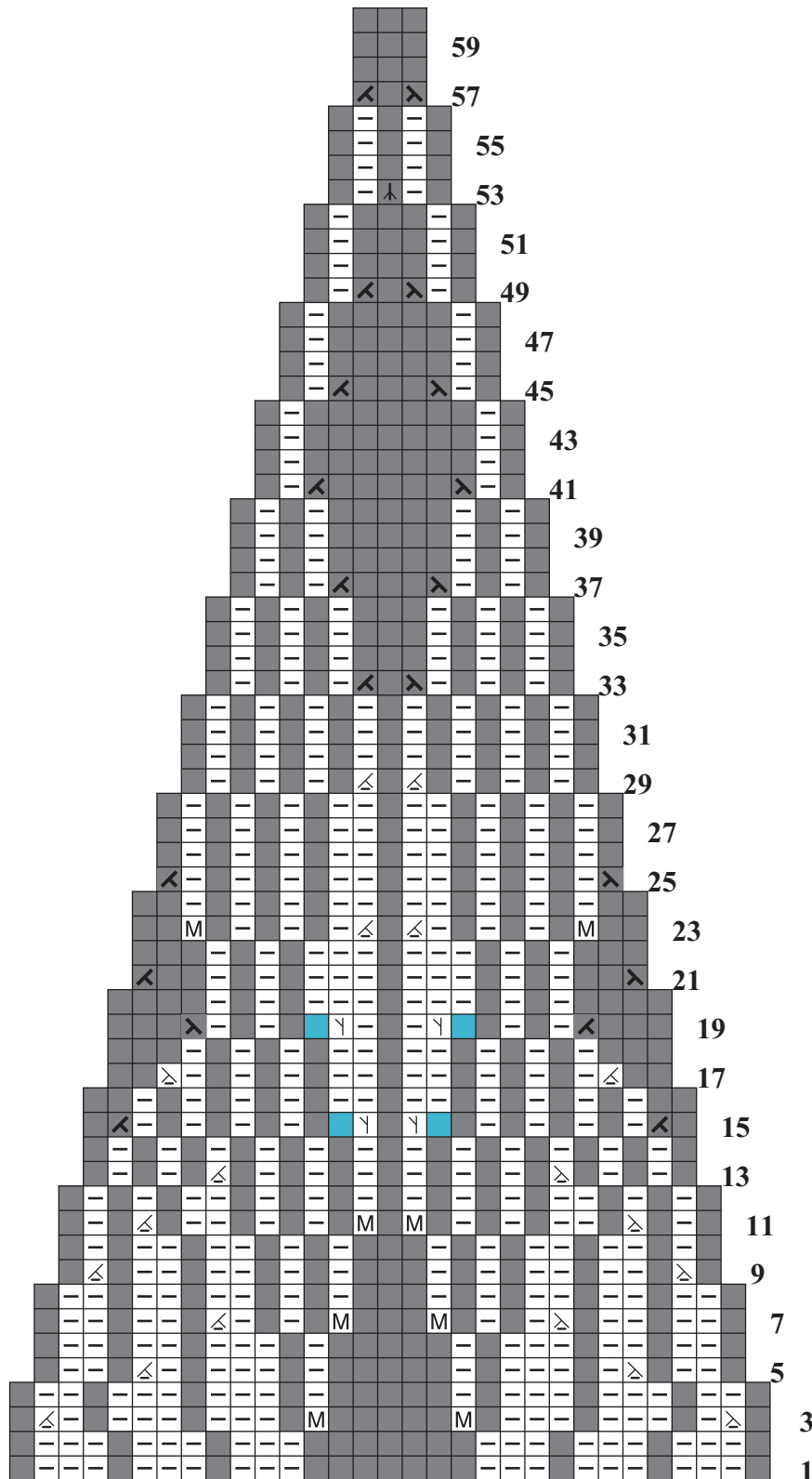


21 TWO-COLOR RIB CARDI

Standard-fitting cardigan in 2-color rib pattern with shaped waistline and small shawl collar. Sized for X-Small/Small, Medium/Large. Shown in size X-Small/Small on page 68.

CHART B

CHART B



Stitch Key

- k on RS, p on WS with A
- p on RS, k on WS with B
- ◊ p2tog with B
- ⌋ kfb with B
- no stitch
- ◊ k2tog with B
- ◊ k2tog with A
- ◊ SKP with B
- ◊ SKP with A
- ◊ M1 with B
- ◊ M1 with A
- ◊ bind off 1 st with B