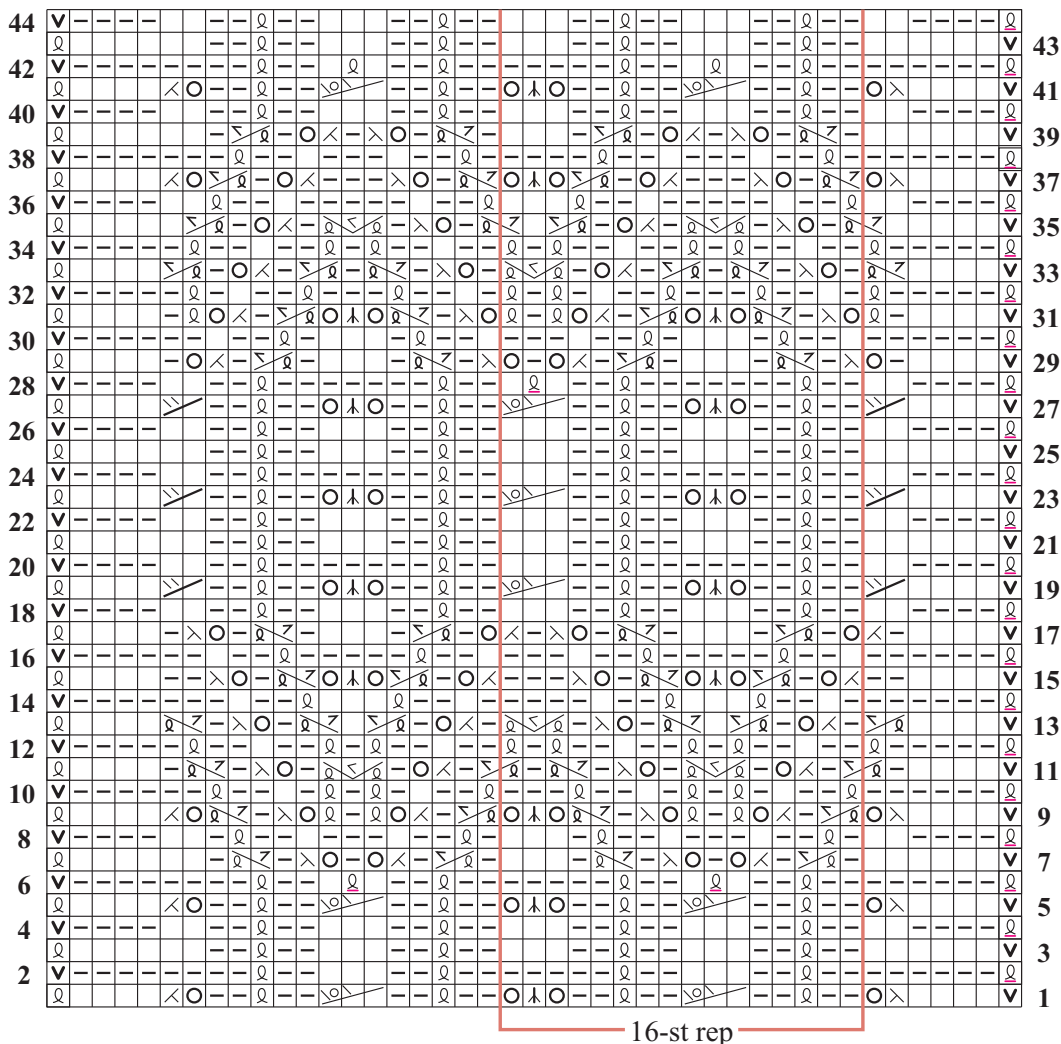


30 LACE STOLE

Rectangular wrap worked in an allover cable and lace lattice pattern from Spring/Summer 2010. Shown on page 64.



Stitch Key

- | | | | |
|----------|----------|---------------------------|------------------|
| 3-st CC | 2-st LPC | yarn over | p on RS, k on WS |
| 3-st RT | S2KP | k1 tbl on WS | k on RS, p on WS |
| 2-st RST | k2tog | k1 tbl on RS, p1tbl on WS | sl 1 pwise wyif |
| 2-st RPC | ssk | | |