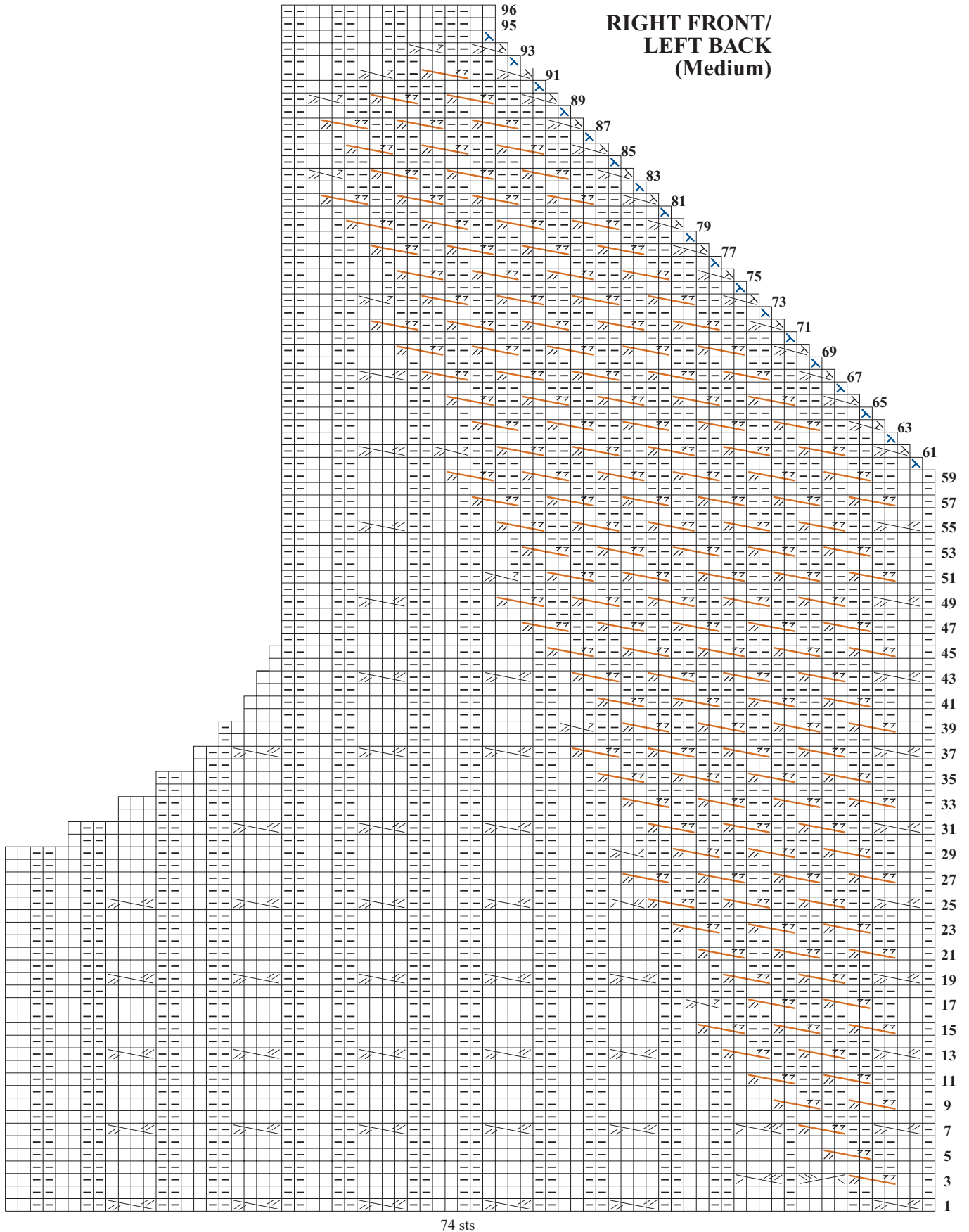


14 CABLED V-NECK PULLOVER (SIZE MEDIUM)

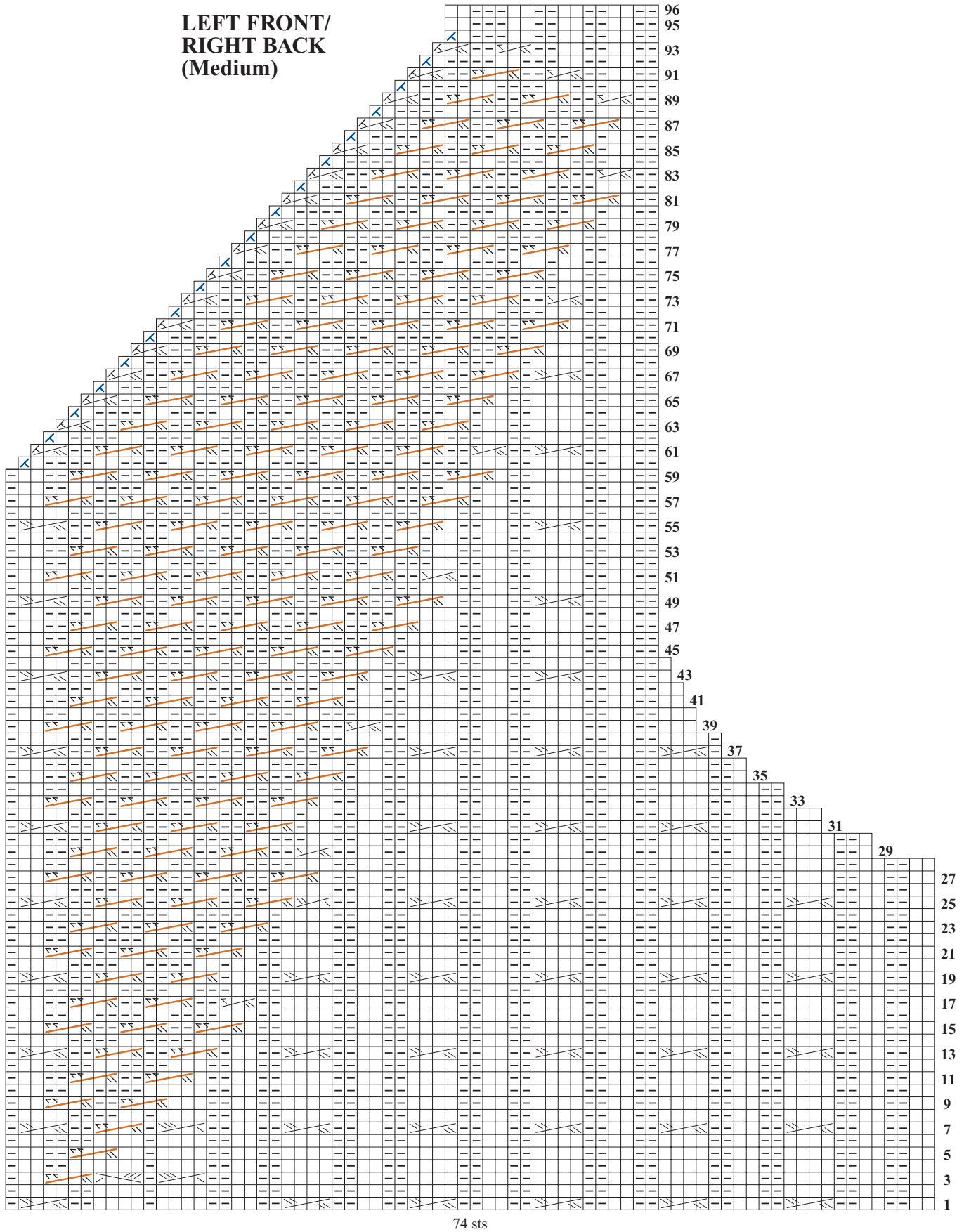
Shown in Winter 2008/09 on page 66. Instructions begin on page 95.



14 CABLED V-NECK PULLOVER (SIZE MEDIUM)

Shown in Winter 2008/09 on page 66. Instructions begin on page 95.

**LEFT FRONT/
RIGHT BACK
(Medium)**



74 sts

14 CABLED V-NECK PULLOVER (ALL SIZES)

Shown in Winter 2008/09 on page 66. Instructions begin on page 95.

ADDITIONAL STITCH GLOSSARY

1 over 3 RC Sl 3 sts to cn and hold to back, k1, k3 from cn.

1 over 3 LC Sl 1 st to cn and hold to front, k3, k1 from cn.

1 over 2 RC Sl 2 sts to cn and hold to back, k1, k2 from cn.

1 over 2 LC Sl 1 st to cn and hold to front, k2, k1 from cn.

2-st RC Sl 1 st to cn and hold to back, k1, k1 from cn.

2-st LC Sl 1 st to cn and hold to front, k1, k1 from cn.

4-st RPC Sl 2 sts to cn and hold to back, k2, p2 from cn.

4-st LPC Sl 2 sts to cn and hold to front, p2, k2 from cn.

3-st RPC Sl 1 st to cn and hold to back, k2, p1 from cn.

3-st LPC Sl 2 sts to cn and hold to front, p1, k2 from cn.

4-st RC dec Sl 2 sts to cn and hold to back, k2, k2tog from cn.

4-st LC dec Sl 2 sts to cn and hold to front, SKP, k2 from cn.

BACK

Beg chart pattern. . . .

Work even until pieces measures approx 11 (11¾, 12½)"/28 (30, 32)cm from beg, end with a row 34 of chart C and row 2 (4, 2) of chart B.

Beg shifting chart for body

Work row 1 of Left Front/Right Back chart across first 64 (74, 84) sts, pm, work row 1 of Right Front/Left Back to end of row. Follow charts for cable shift and for armhole shaping, slip marker every row.

Neck shaping

Chart row 48 (60, 60) (WS) Work across to 1 st before marker, p2tog tbl, remove marker, join second ball of yarn, p2tog, work to end. Work both sides of neck at same time, following charts for neck shaping. When charts are finished, bind off rem sts each side for shoulders.

FRONT

Cast on and work same as for back.

Stitch Key

 k on RS, p on WS

 p on RS, k on WS

 k2tog on RS, p2tog on WS


 SKP on RS, p2tog tbl on WS

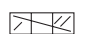
 4-st RC


 4-st LC


 1 over 3 RC

 1 over 3 LC

 1 over 2 RC


 1 over 2 LC

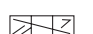
 2-st RC


 2-st LC


 4-st RPC

 4-st LPC

 3-st RPC

 3-st LPC

 4-st RC dec

 4-st LC dec