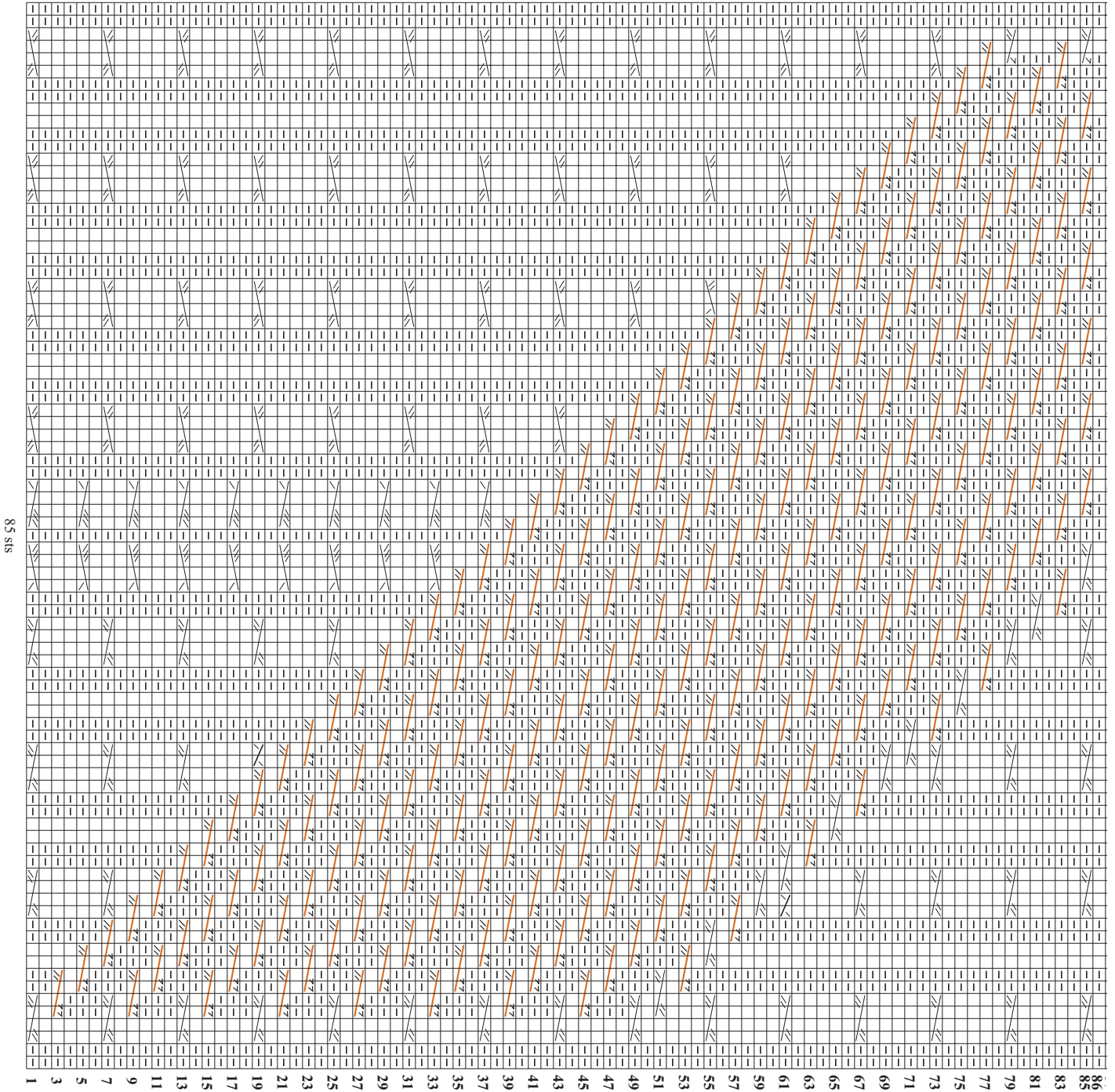


14 CABLED V-NECK PULLOVER (RIGHT SLEEVE)

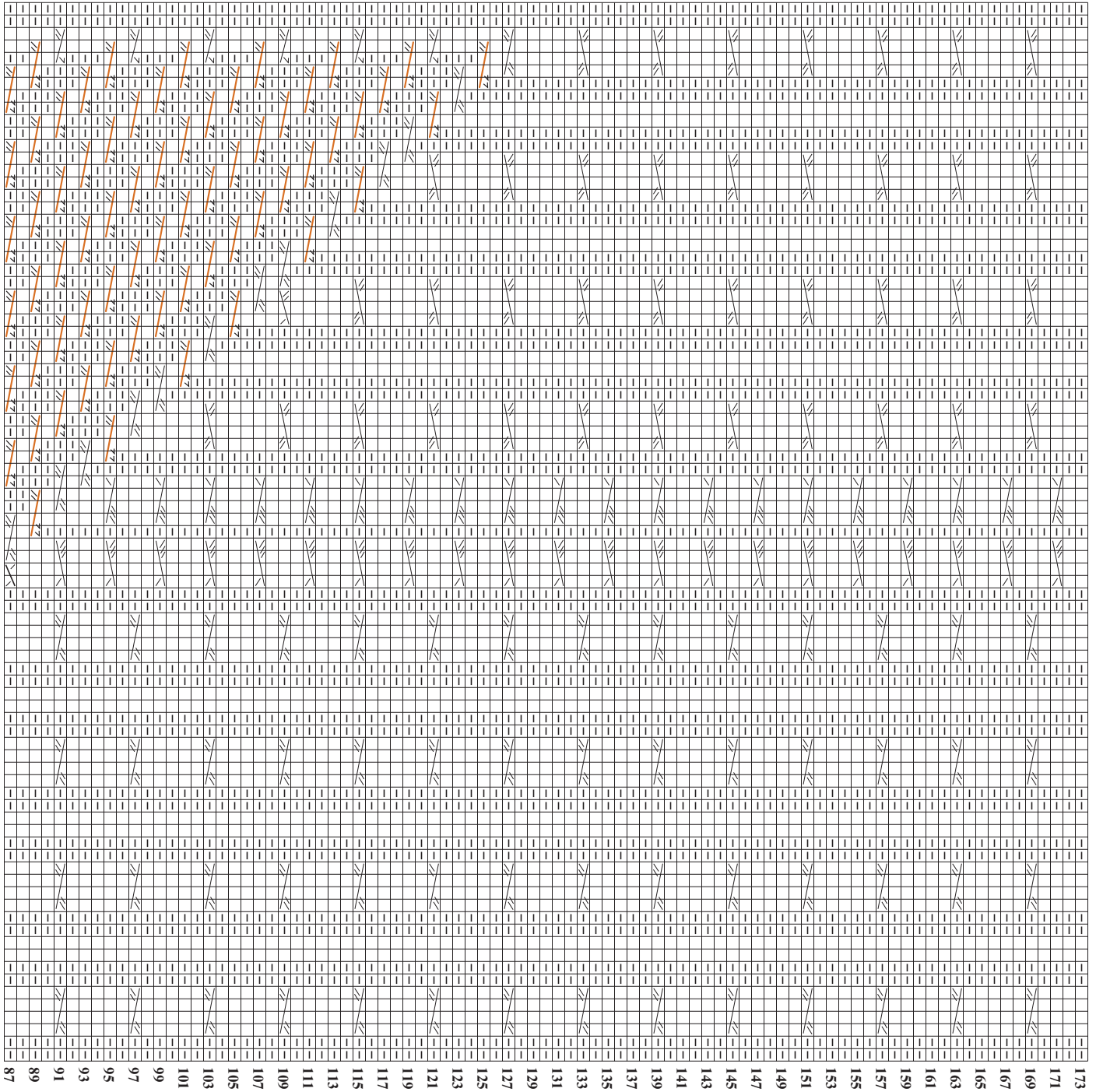
Shown in Winter 2008/09 on page 66. Instructions begin on page 95.















14 CABLED V-NECK PULLOVER (RIGHT SLEEVE)

Shown in Winter 2008/09 on page 66. Instructions begin on page 95.

RIGHT SLEEVE

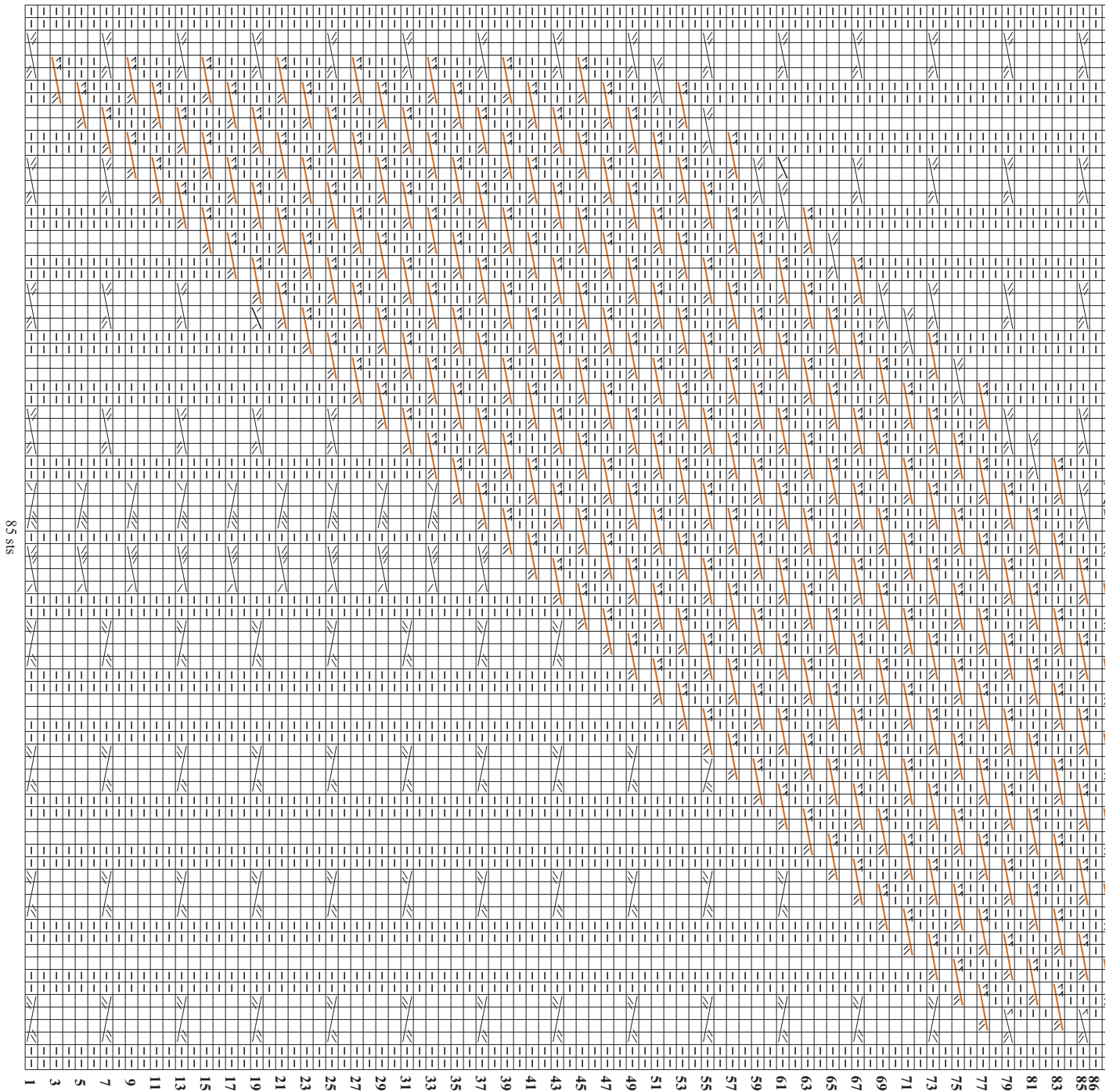


Stitch Key

- k on RS, p on WS
- p on RS, k on WS
-  4-st RC
-  4-st LC
-  1 over 3 RC
-  1 over 3 LC
-  1 over 2 RC
-  1 over 2 LC
-  2-st RC
-  2-st LC
-  4-st RPC
-  4-st LPC
-  3-st RPC
-  3-st LPC

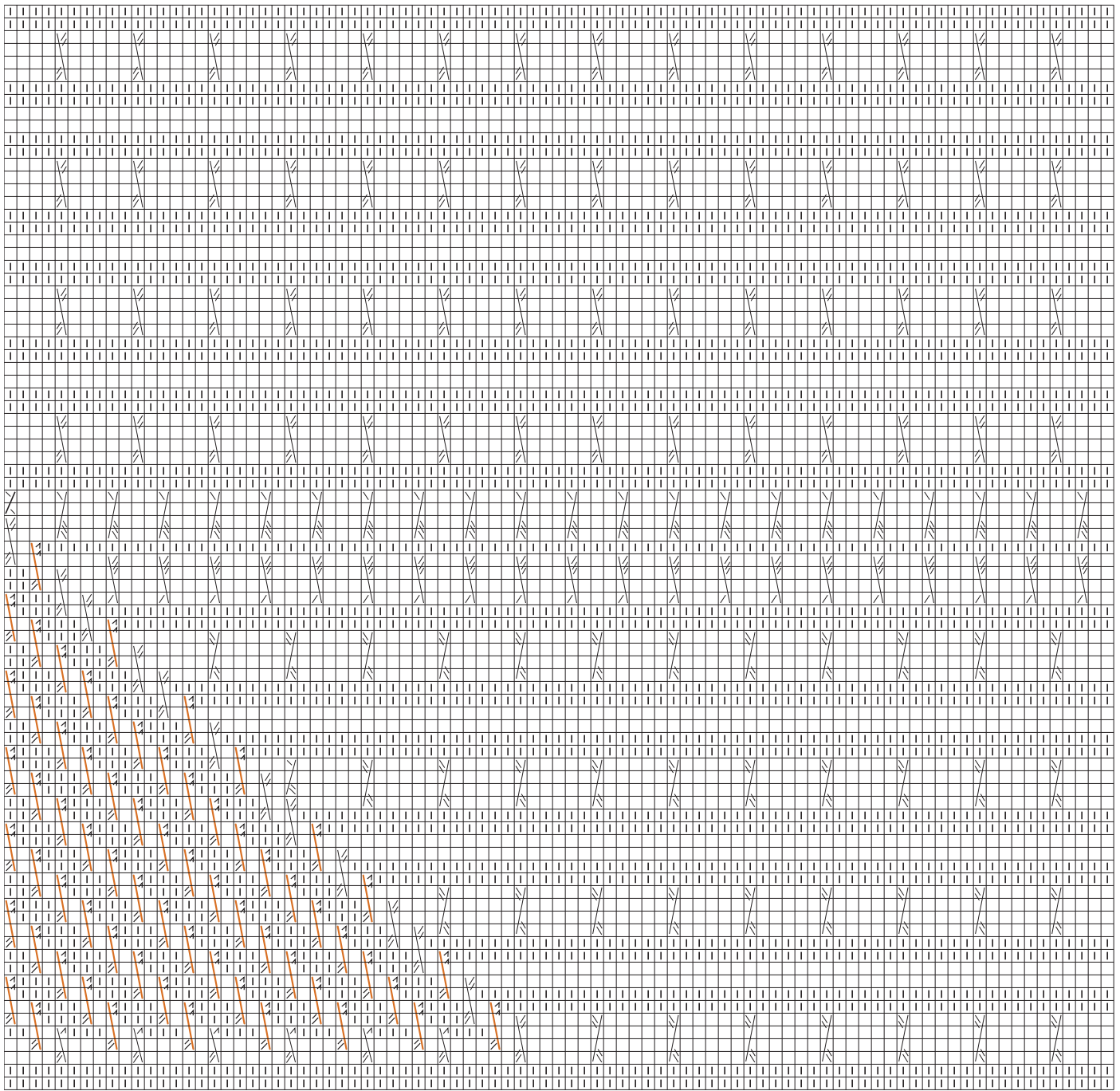
14 CABLED V-NECK PULLOVER (LEFT SLEEVE)

Shown in Winter 2008/09 on page 66. Instructions begin on page 95.



14 CABLED V-NECK PULLOVER (LEFT SLEEVE)





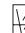








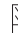
Shown in Winter 2008/09 on page 66. Instructions begin on page 95.



LEFT SLEEVE

173
171
169
167
165
163
161
159
157
155
153
151
149
147
145
143
141
139
137
135
133
131
129
127
125
123
121
119
117
115
113
111
109
107
105
103
101
99
97
95
93
91
89
87

Stitch Key

-  k on RS, p on WS
-  p on RS, k on WS
-  4-st RC
-  4-st LC
-  1 over 3 RC
-  1 over 3 LC
-  1 over 2 RC
-  1 over 2 LC
-  2-st RC
-  2-st LC
-  4-st RPC
-  4-st LPC
-  3-st RPC
-  3-st LPC